

COCOA BEACH, FLORIDA

VOR/DME RWY 2

VOR/DME 110.0 Chan 37	MLB 015°	APCH CRS 015°	Rwy Idg THRE 6	Rwy Idg THRE 6	Arpt Elev 8	9023
-----------------------------	-------------	------------------	----------------------	----------------------	----------------	------

AL-38 [USAF]

PATRICK AFB (KCOF)

▼ * When ALS inop, increase CAT AB RVR to 50 and vis to 1 mile, CAT C RVR to 60 and vis to 1½ miles, CAT D RVR to 65 and vis to 1½ miles.

ALS-F1

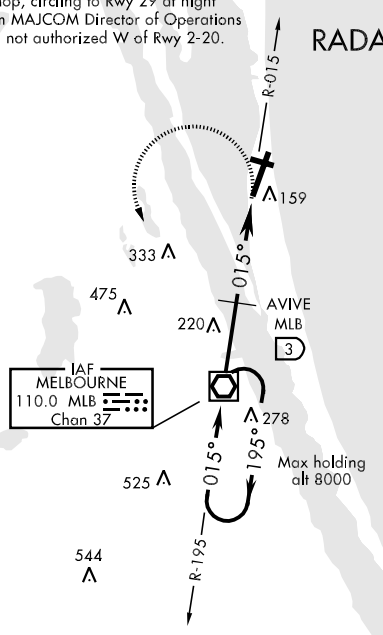
MISSED APPROACH: Climb to 700, then turn left to intercept MLB VOR/DME R-015 then direct MLB. Maintain 2300 and hold.

ATIS ★ 119.175 273.5	ORLANDO APP CON 132.65 281.425	PATRICK TOWER ★ 133.75 269.375	GND CON 124.35 335.8	CLNC DEL 118.4 289.4
-------------------------	-----------------------------------	-----------------------------------	-------------------------	-------------------------

** When Rwy 29 VGSI inop, circling to Rwy 29 at night requires approval from MAJCOM Director of Operations or equivalent. Circling not authorized W of Rwy 2-20.

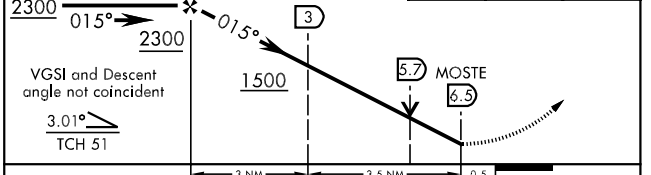
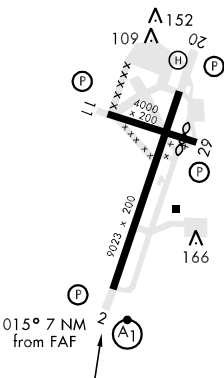
1046

RADAR or DME REQUIRED



EMERG SAFE ALT 100 NM 3000

ELEV 8	THRE 6
Rwy 29 Idg 3700'	HIRL Rwy 2-20 MIRL Rwy 11-29



CATEGORY	A	B	C	D
S-02 *	560/40 554 (600-¾)		560/55 554 (600-1½)	560/60 554 (600-1¼)
CIRCLING **	620-1 612 (700-1)		620-1¾ 612 (700-1¾)	620-2 612 (700-2)

COCOA BEACH, FLORIDA
Amdt 1 20SEP12

28°14'N-80°37'W

PATRICK AFB (KCOF)

VOR/DME RWY 2

SE-3, 07 FEB 2013 to 07 MAR 2013

SE-3, 07 FEB 2013 to 07 MAR 2013