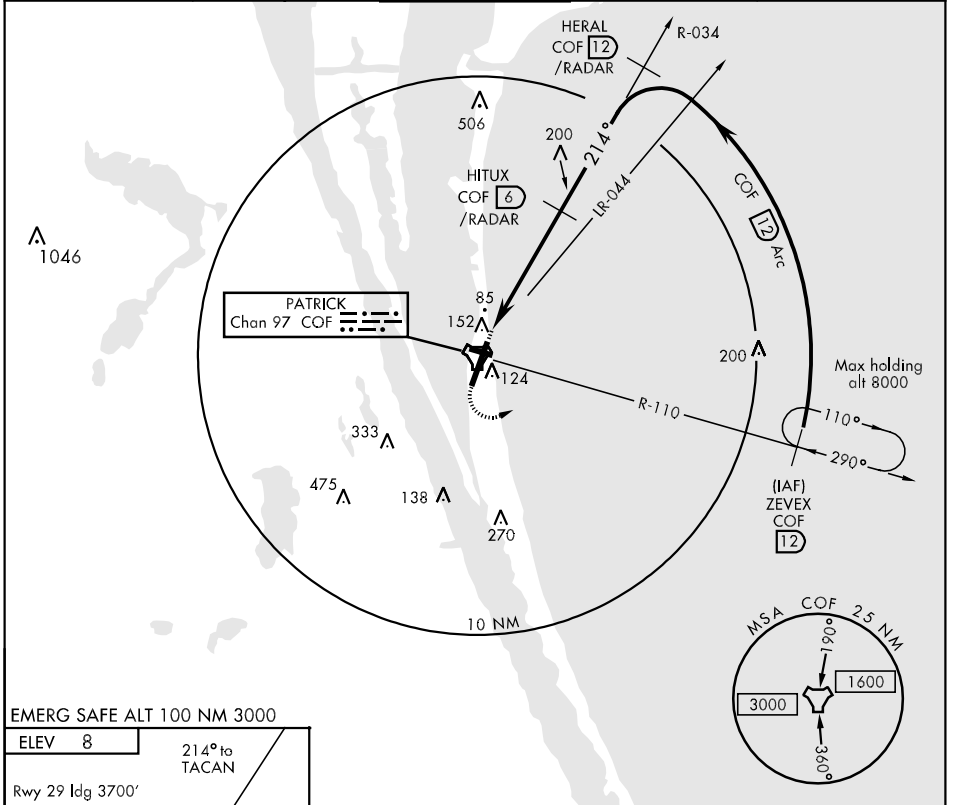


TACAN COF Chan 97	APCH CRS 214°	Rwy Idg 9023 TDZE 8 Arpt Elev 8	AL-38 [USAF]	PATRICK AFB (KCOF)
----------------------	------------------	--	--------------	--------------------

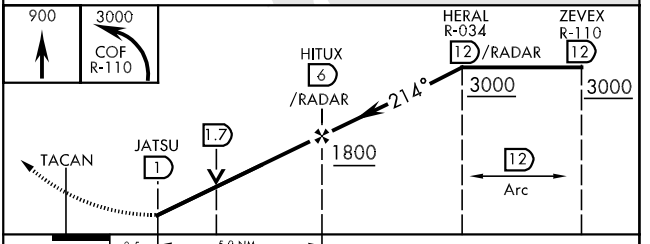
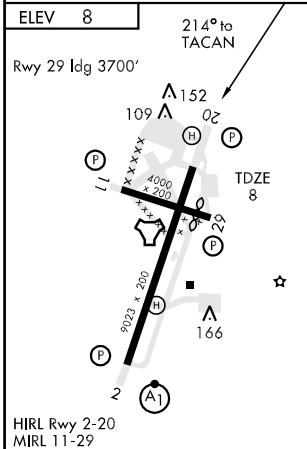
▼ * When Rwy 29 VGSI inop, circling to Rwy 29 at night requires approval from MAJCOM Director of Operations or equivalent. Circling not authorized W of Rwy 2-20.

MISSED APPROACH: Climb to 900, then climbing left turn to 3000, intercept the COF R-110 outbound to ZEVEX and hold, continue climb in hold to 3000.

ATIS * 119.175 273.5	ORLANDO APP CON 132.65 281.425	PATRICK TOWER * 133.75 269.375	GND CON 124.35 335.8	CLNC DEL 118.4 289.4
-------------------------	-----------------------------------	-----------------------------------	-------------------------	-------------------------



EMERG SAFE ALT 100 NM 3000



CATEGORY	A	B	C	D	E
S-20	440/50	432 (500-1)	440/60 432 (500-1½)	440-1½	432 (500-1½)
CIRCLING *	500-1	492 (500-1)	500-1½ 492 (500-1½)	560-2 552 (600-2)	600-2 592 (600-2)

SE-3, 07 FEB 2013 to 07 MAR 2013

SE-3, 07 FEB 2013 to 07 MAR 2013