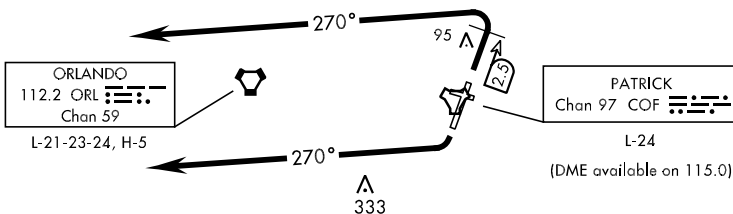


ATIS ★ 119.175 273.5  
 CLNC DEL  
 118.4 289.4  
 GND CON  
 124.35 335.8  
 PATRICK TOWER ★  
 133.75 269.375  
 ORLANDO DEP CON  
 132.65 281.425

ORMOND BEACH  
 112.6 OMN  
 Chan 73  
 L-21-23-24, H-5

## RADAR AND DME REQUIRED



MELBOURNE  
 110.0 MLB  
 Chan 37  
 L-23-24

LAKELAND  
 116.0 LAL  
 Chan 107  
 L-21-24, H-5

PAHOKEE  
 115.4 PHK  
 Chan 101  
 L-23, H-5

TREASURE  
 117.3 TRV  
 Chan 120  
 L-24, H-5

NOTE: Chart not to scale.

### DEPARTURE ROUTE DESCRIPTION

Expect RADAR vectors to filed/assigned route.  
 Expect clearance to filed altitude/flight level 10 minutes after departure.

TAKE-OFF RWY 2: Cross DER at or above 10' AGL/18' MSL, track runway heading climb and maintain 2000. At COF TACAN 2.5 DME turn left heading 270°.  
 Note: All aircraft shall not commence turn prior to 2.5 DME due to noise abatement.

TAKE-OFF RWY 20: Cross DER at or above 20' AGL/25' MSL, track runway heading climb and maintain 2000. After departure end of runway turn right heading 270°.