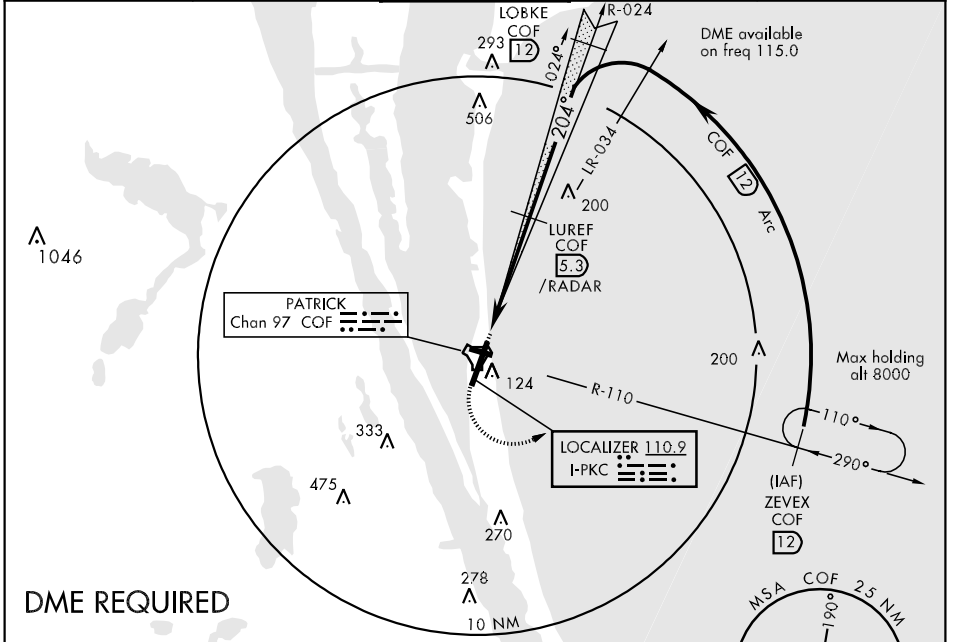


LOC I-PKC <b>110.9</b>	APCH CRS <b>204°</b>	Rwy ldg 9023 TDZE 8 Arpt Elev 8	AL-38 [USAF]	PATRICK AFB (KCOF)
---------------------------	-------------------------	--	--------------	--------------------

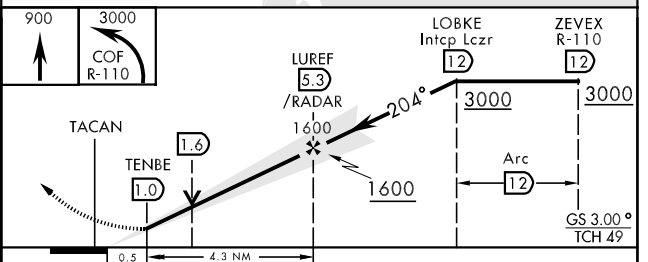
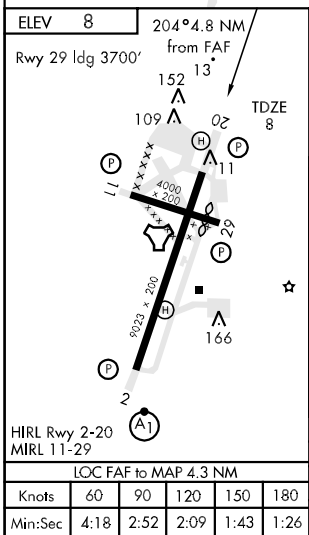
**▼** \* When Rwy 29 VGS I inop, circling to Rwy 29 at night requires approval from MAJCOM Director of Operations or equivalent. Circling not authorized W of Rwy 2-20.

MISSED APPROACH: Climb to 900, then turn left, intercept the COF R-110 outbound direct ZEVEX, maintain 3000 and hold.

ATIS ★ <b>119.175 273.5</b>	ORLANDO APP CON <b>132.65 281.425</b>	PATRICK TOWER ★ <b>133.75 269.375</b>	GND CON <b>124.35 335.8</b>	CLNC DEL <b>118.4 289.4</b>
--------------------------------	--	--	--------------------------------	--------------------------------



## DME REQUIRED



	900	3000			
	COF R-110				
	TACAN	TENBE 1.0	LUREF 5.3 /RADAR 1600	LOBKE Intcp Lczt 12	ZEVEX R-110 12
				3000	3000
				Arc 12	GS 3.00° TCH 49'
	0.5	4.3 NM			
CATEGORY	A	B	C	D	
S-ILS 20	239/40	231 (300-34)	239/50	231	(300-1)
S-LOC 20	420/50	412 (500-1)	420/60	412	(500-1/4)
CIRCLING *	500-1	492 (500-1)	500-1 1/2	560-2	552 (600-2)
			492 (500-1/2)		

SE-3, 07 FEB 2013 to 07 MAR 2013

SE-3, 07 FEB 2013 to 07 MAR 2013