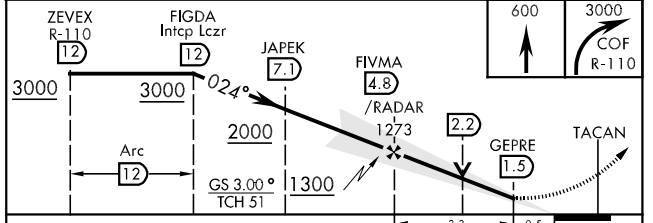
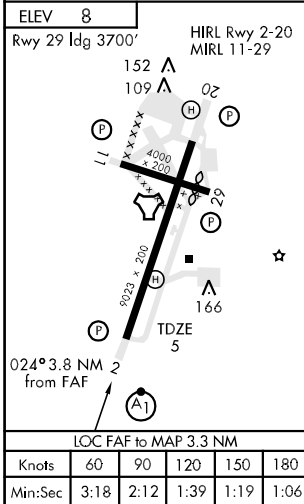
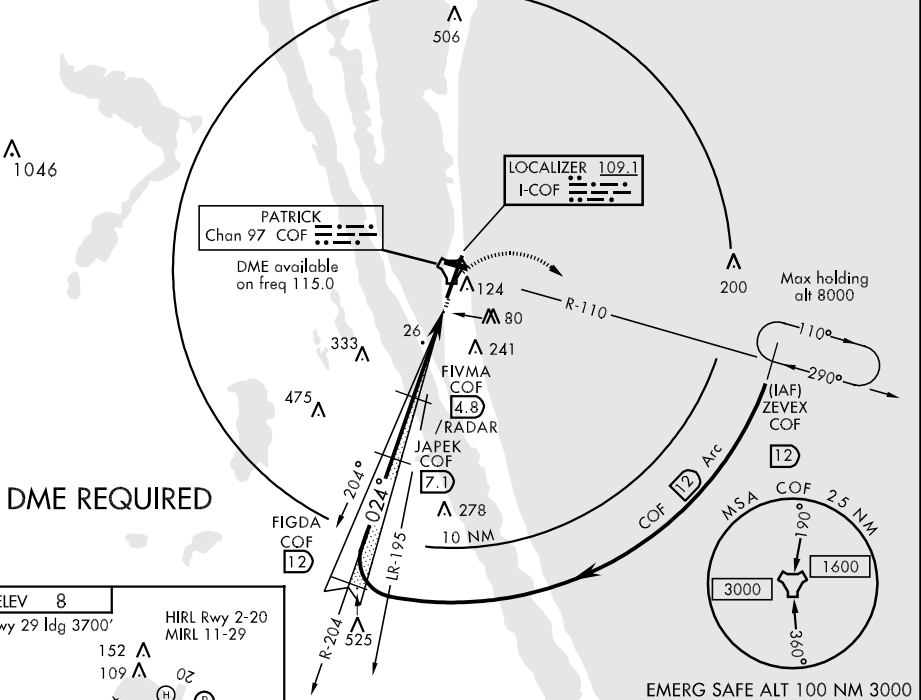


LOC I-COF 109.1	APCH CRS 024°	Rwy Idg TDZE Arpt Elev 9023 5 8	AL-38 [USAF]	PATRICK AFB (KCOF)
* When ALS inop increase RVR to 50 and vis to 1 mile. ** When ALS inop, increase CAT AB RVR to 50 and vis to 1 mile, CAT C RVR to 60 and vis to 1¼ miles, CAT D vis to 1½ miles.			ALSF-1 	MISSED APPROACH: Climb to 600, then turn right to intercept the COF R-110 direct ZEVEX, maintain 3000 and hold.

ATIS ★ 119.175 273.5	ORLANDO APP CON 132.65 281.425	PATRICK TOWER ★ 133.75 269.375	GND CON 124.35 335.8	CLNC DEL 118.4 289.4
--------------------------------	--	--	--------------------------------	--------------------------------

*** When Rwy 29 VGSI inop, circling to Rwy 29 at night requires approval from MAJCOM Director of Operations or equivalent. Circling not authorized W of Rwy 2-20.



CATEGORY	A	B	C	D
S-ILS 2 *	313/40 308		(400-¾)	
S-LOC 2 **	440/40	435 (500-¾)	440/50 435 (500-1)	440/60 435 (500-1¼)
CIRCLING ***	500-1	492 (500-1)	500-1½ 492 (500-1½)	560-2 552 (600-2)

SE-3, 07 FEB 2013 to 07 MAR 2013

SE-3, 07 FEB 2013 to 07 MAR 2013