

VOR/DME RWY 30R

BAKERSFIELD/MEADOWS FIELD (BFL)

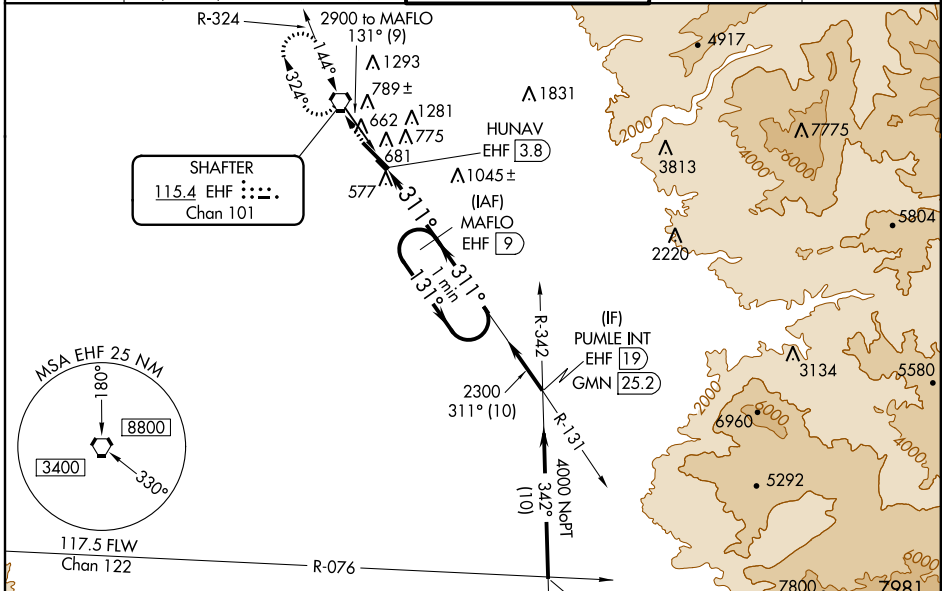
VORTAC EHF 115.4 Chan 101	APP CRS 311°	Rwy Idg TDZE Apt Elev	7429 490 507
--	------------------------	-----------------------------	---

▼ Circling NA northeast of Rwy 12L-30R.
▲ If local altimeter setting not received, use Porterville altimeter setting and increase all MDAs 100 feet.



MISSED APPROACH: Climb to 3000 direct EHF VORTAC and hold, continue climb-in-hold to 3000.

ATIS 118.6	BAKERSFIELD APP CON ★ 118.8 284.625 118.9 270.3 (SOUTH) (NORTH)	BAKERSFIELD TOWER ★ 118.1 (CTAF) 257.8	GND CON 121.7	UNICOM 122.95
----------------------	--	--	-------------------------	-------------------------

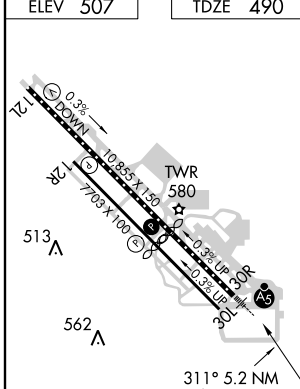


SW-3, 07 FEB 2013 to 07 MAR 2013

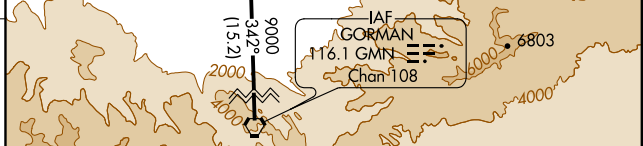
SW-3, 07 FEB 2013 to 07 MAR 2013

Procedure NA for arrivals on GMN VORTAC airway radials 297 CW 328.

ELEV 507	TDZE 490
----------	----------



TDZ/CL Rwy 30R	960/24	470 (500-1/2)	960/40	960/50
HIRL Rwy 12L-30R			470 (500-3/4)	470 (500-1)
MIRL Rwy 12R-30L			960-1 1/2	1060-2
			453 (500-1 1/2)	553 (600-2)



CATEGORY	A	B	C	D
S-30R	960/24	470 (500-1/2)	960/40	960/50
CIRCLING	960-1	453 (500-1)	960-1 1/2	1060-2
			453 (500-1 1/2)	553 (600-2)