


WAAS CH 58118 W30A	APP CRS 301°	Rwy Idg 7429 TDZE 493 Apt Elev 510
--	------------------------	---

RNAV (GPS) RWY 30R

BAKERSFIELD/MEADOWS FIELD (BFL)

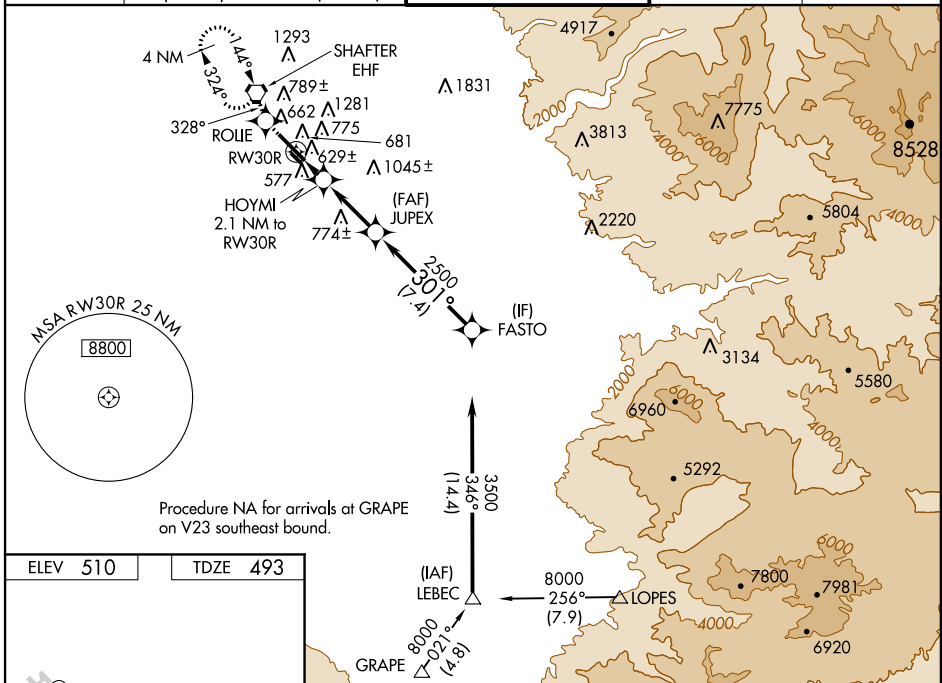
⚠ Circling NA northeast of Rwy 12L-30R. Baro-VNAV NA when using Porterville altimeter setting. For uncompensated Baro-VNAV systems, LNAV/VNAV NA below -16°C (4°F) or above 48°C (118°F). DME/DME RNP: 0.3 NA. When local altimeter setting not received, use Porterville altimeter setting and increase all DA 92 feet, all MDA 100 feet, increase LNAV/VNAV all Cats visibility to 1½ miles, LNAV Cat C visibility to RVR 6000, LNAV Cat D visibility to 1½ miles, and circling Cat C visibility to 1¾ miles. For inoperative MALS R when using Porterville altimeter setting, increase LPV all Cats visibility to RVR 5000. VDP NA when using Porterville altimeter setting.

MALS R



MISSED APPROACH:
Climb to 3000 direct ROUE and on track 328° to EHF VORTAC and hold, continue climb-in-hold to 3000.

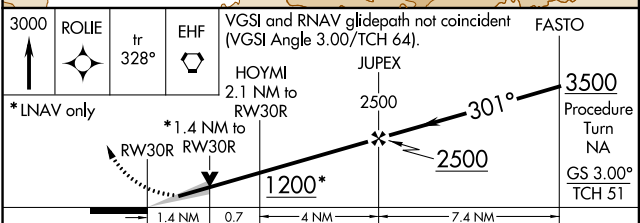
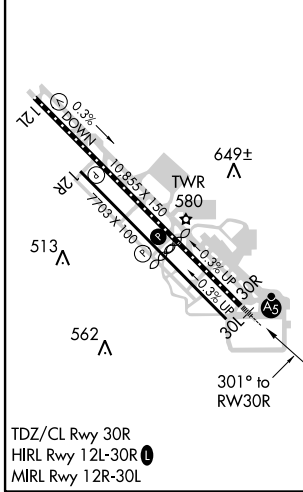
ATIS 118.6	BAKERSFIELD APP CON ★ 118.8 284.625 118.9 270.3 (SOUTH) (NORTH)	BAKERSFIELD TOWER ★ 118.1(CTAF) 257.8	GND CON 121.7	UNICOM 122.95
----------------------	--	---	-------------------------	-------------------------



SW-3, 07 FEB 2013 to 07 MAR 2013

SW-3, 07 FEB 2013 to 07 MAR 2013

ELEV 510	TDZE 493
----------	----------



CATEGORY	A	B	C	D
LPV DA	693/24		200 (200-½)	
LNAV/VNAV DA	966/60		473 (500-1½)	
LNAV MDA	1000/24 507 (500-½)		1000/50 507 (500-1)	
CIRCLING	1000-1 490 (500-1)		1000-1½ 1060-2 490 (500-1½) 550 (600-2)	