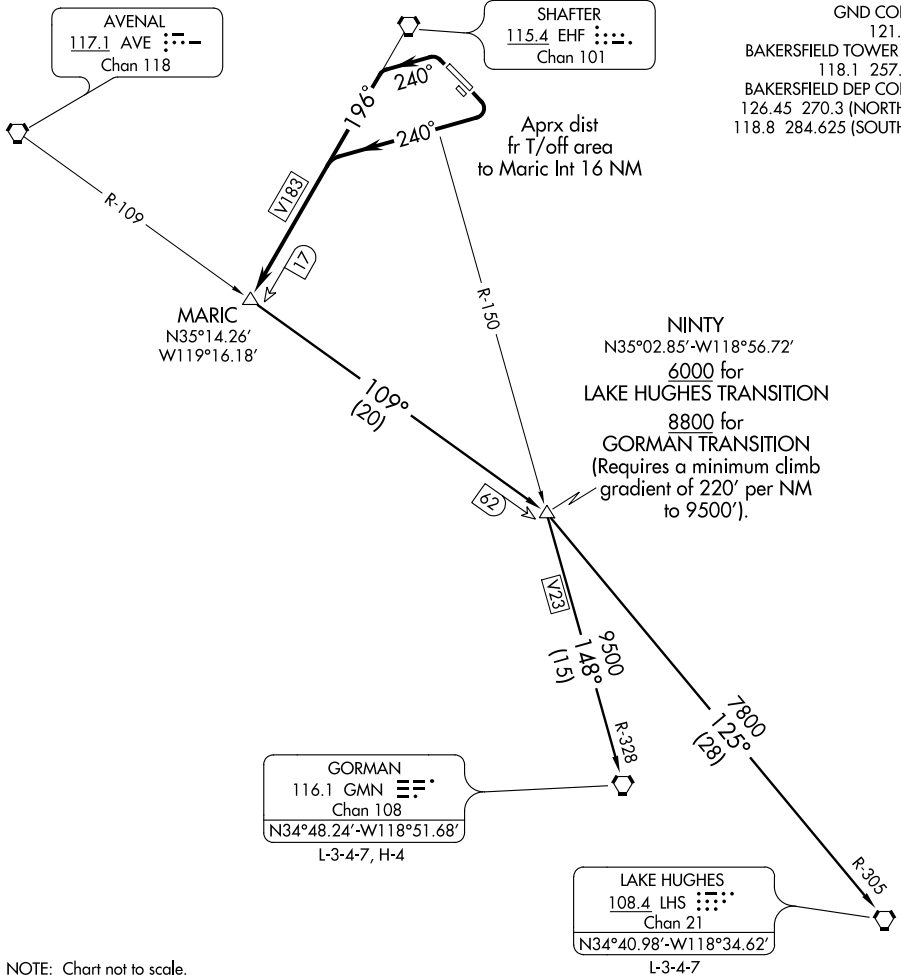


MARIC THREE DEPARTURE

SL-36 (FAA)

BAKERSFIELD/MEADOWS FIELD (BFL)
BAKERSFIELD, CALIFORNIA

ATIS 118.6
GND CON 121.7
BAKERSFIELD TOWER* 118.1 257.8
BAKERSFIELD DEP CON 126.45 270.3 (NORTH) 118.8 284.625 (SOUTH)



SW-3, 07 FEB 2013 to 07 MAR 2013

SW-3, 07 FEB 2013 to 07 MAR 2013

NOTE: Chart not to scale.

DEPARTURE ROUTE DESCRIPTION

TAKE-OFF RUNWAYS 12L/R: Turn right heading 240°. Thence....

TAKE-OFF RUNWAYS 30L/R: Turn left heading 240°. Thence....

....intercept and proceed via the EHF R-196 to MARIC INT. Thence via (transition) or (assigned route).

GORMAN TRANSITION (MARIC3.GMN): From over MARIC INT via AVE R-109 and GMN R-328 to GMN VORTAC.

LAKE HUGHES TRANSITION (MARIC3.LHS): From over MARIC INT via AVE R-109 and LHS R-305 to LHS VORTAC.

MARIC THREE DEPARTURE