

LOC/DME I-BFL 111.9 Chan 56	APP CRS 301°	Rwy Idg 7429 TDZE 493 Apt Elev 510
--	------------------------	---

ILS or LOC/DME RWY 30R

BAKERSFIELD/MEADOWS FIELD (BFL)

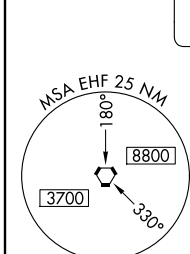
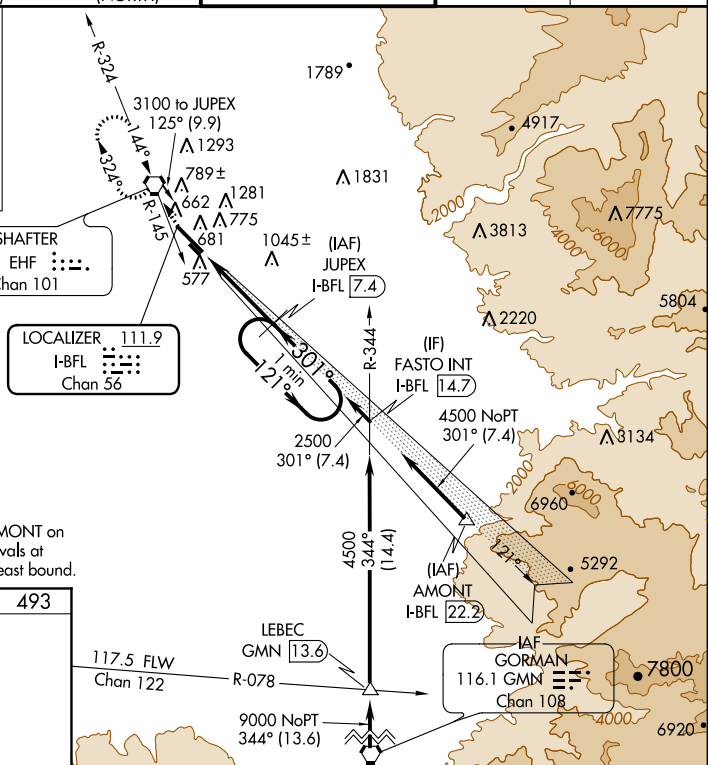
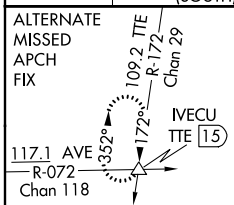
⚠ Circling NA northeast of Rwy 12L-30R.
When local altimeter setting not received, use Porterville altimeter setting and increase all DA 92 feet, MDA 100 feet, and increase S-LOC 30R Cat C visibility to RVR 5000 and Cat D to RVR 6000. For inoperative MALSRR when using Porterville altimeter setting, increase S-ILS 30R all Cats visibility to RVR 5000. VDP NA when using Porterville altimeter setting.

MALSRR



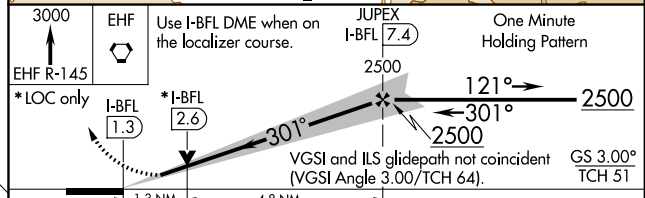
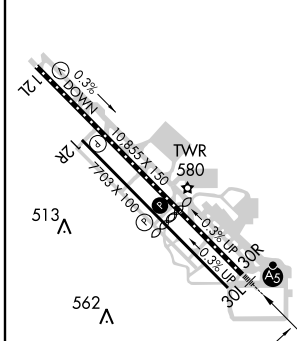
MISSED APPROACH: Climb to 3000 via EHF VORTAC R-145 to EHF VORTAC and hold, continue climb-in-hold to 3000.

ATIS 118.6	BAKERSFIELD APP CON * 118.8 284.625 (SOUTH)	118.9 270.3 (NORTH)	BAKERSFIELD TOWER * 118.1 (CTAF) 0 257.8	GND CON 121.7	UNICOM 122.95
----------------------	--	-------------------------------	---	-------------------------	-------------------------



Procedure NA for arrivals at AMONT on V459 southeast bound and arrivals at GMN VORTAC on V137 southeast bound.

ELEV 510	TDZE 493
----------	----------



CATEGORY	A	B	C	D
S-ILS 30R		693/18	200 (200-½)	
S-LOC 30R	960/24	467 (500-½)	960/40 467 (500-¾)	960/50 467 (500-1)
CIRCLING	960-1	450 (500-1)	960-1½ 450 (500-1½)	1060-2 550 (600-2)

SW-3, 07 FEB 2013 to 07 MAR 2013

SW-3, 07 FEB 2013 to 07 MAR 2013