

FASTO ONE ARRIVAL

ST-36 (FAA)

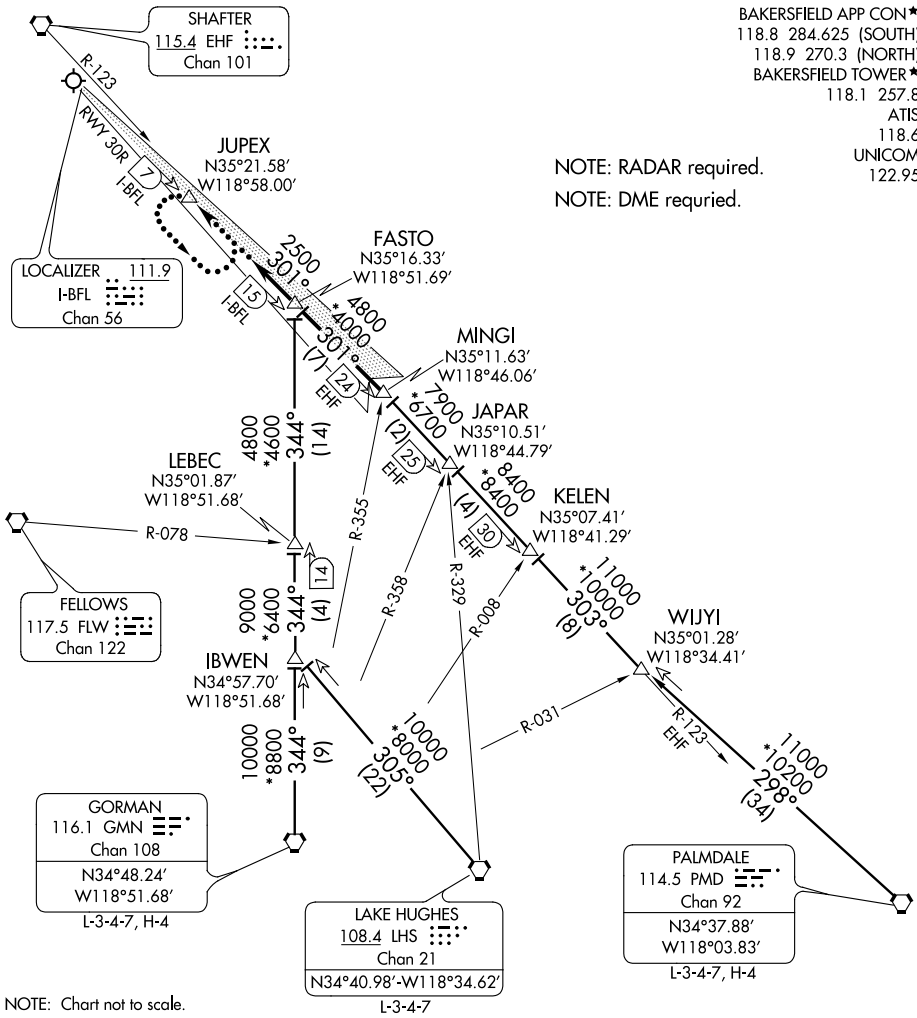
MEADOWS FIELD
BAKERSFIELD, CALIFORNIA

BAKERSFIELD APP CON*
 118.8 284.625 (SOUTH)
 118.9 270.3 (NORTH)
 BAKERSFIELD TOWER*
 118.1 257.8
 ATIS
 118.6
 UNICOM
 122.95

NOTE: RADAR required.
 NOTE: DME required.

SW-3, 07 FEB 2013 to 07 MAR 2013

SW-3, 07 FEB 2013 to 07 MAR 2013



NOTE: Chart not to scale.

GORMAN TRANSITION (GMN.FASTO1): From over GMN VORTAC via GMN R-344 to FASTO INT. Thence

LAKE HUGHES TRANSITION (LHS.FASTO1): From over LHS VORTAC via LHS R-305 and GMN R-344 to FASTO INT. Thence

PALMDALE TRANSITION (PMD.FASTO1): From over PMD VORTAC via PMD R-298 and EHF R-123 to MINGI INT, then via I-BFL LOC course to FASTO INT. Thence

. . . . From over FASTO INT on the I-BFL Localizer for the ILS or LOC/DME RWY 30R procedure.

LOST COMMUNICATIONS: From FASTO INT direct to JUPEX INT maintain 2500; intercept and execute ILS or LOC/DME RWY 30R approach. If unable, proceed to JUPEX INT and hold maintain 2500.

FASTO ONE ARRIVAL