

BAKER CITY, OREGON

AL-35 (FAA)

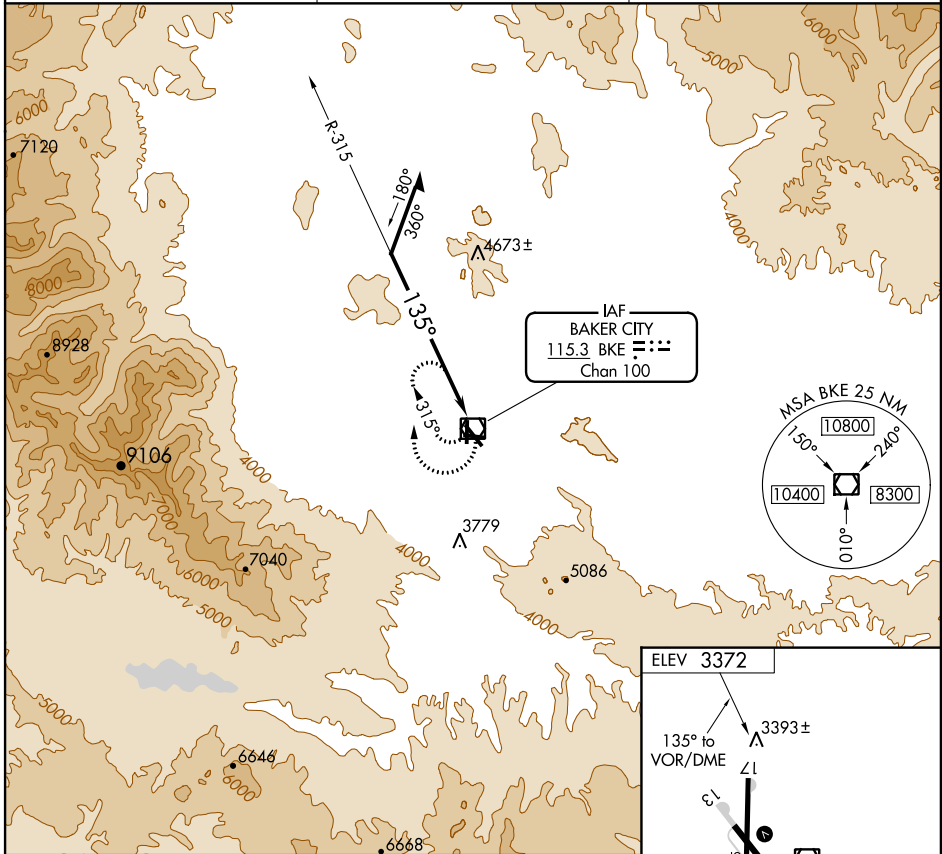
VOR/DME BKE 115.3 Chan 100	APP CRS 135°	Rwy Idg TDZE Apt Elev N/A N/A 3372
--	------------------------	--

VOR-A
BAKER CITY MUNI (BKE)

▽
▲

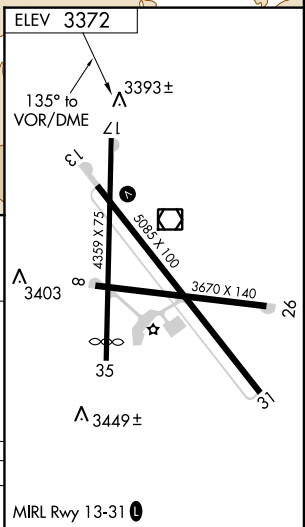
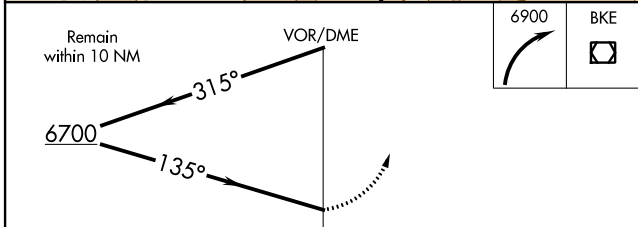
MISSED APPROACH: Climbing right turn to 6900 in BKE VOR/DME holding pattern.

ASOS 134.275	SALT LAKE CENTER 128.05 306.95	UNICOM 123.0 (CTAF)
------------------------	--	-------------------------------



NW-1, 07 FEB 2013 to 07 MAR 2013

NW-1, 07 FEB 2013 to 07 MAR 2013



CATEGORY	A	B	C	D
CIRCLING	5200-1¼ 1828 (1900-1¼)	5200-1½ 1828 (1900-1½)	5200-3	1828 (1900-3)

BAKER CITY, OREGON
Amdt 1A 12208

44°50'N-117°49'W

BAKER CITY MUNI (BKE)
VOR-A