

BAKER CITY, OREGON

AL-35 (FAA)

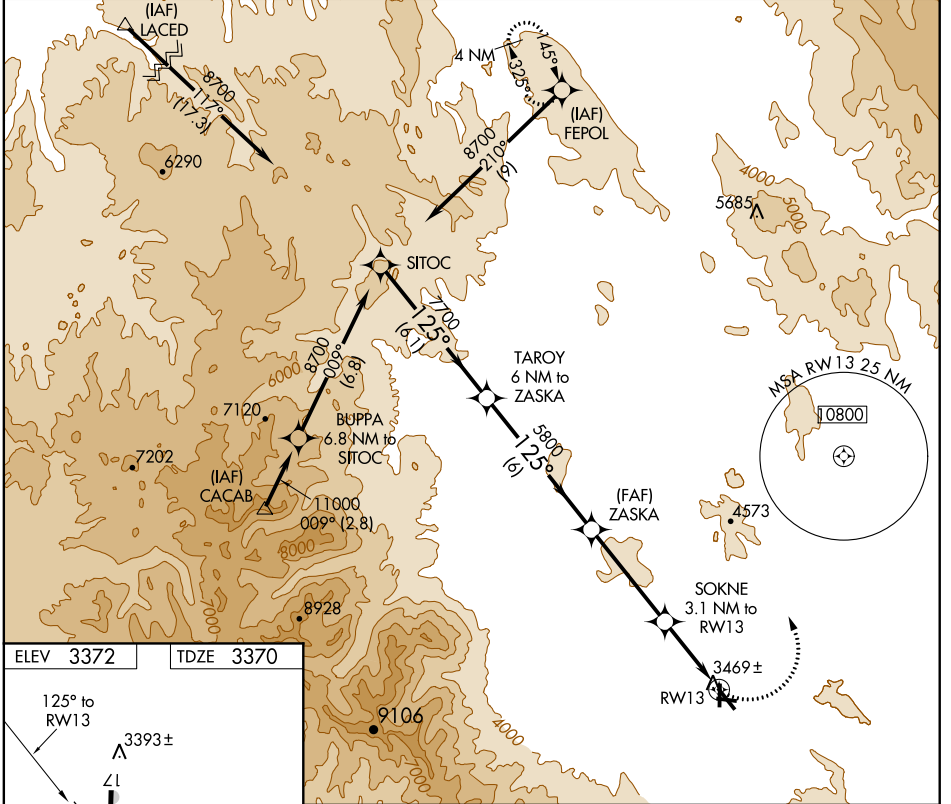
# RNAV (GPS) RWY 13

BAKER CITY MUNI (BKE)

APP CRS <b>125°</b>	Rwy Idg <b>5085</b>
	TDZE <b>3370</b>
	Apt Elev <b>3372</b>

	DME/DME RNP-0.3 NA.	MISSED APPROACH: Climbing left turn to 9000 direct FEPOL and hold.
--	---------------------	--

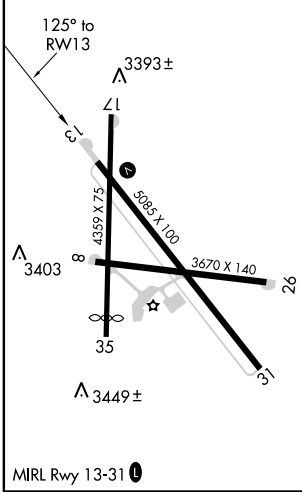
ASOS <b>134.275</b>	SALT LAKE CENTER <b>128.05 306.95</b>	UNICOM <b>123.0 (CTAF)</b>
------------------------	--	-------------------------------



NW-1, 07 FEB 2013 to 07 MAR 2013

NW-1, 07 FEB 2013 to 07 MAR 2013

ELEV 3372	TDZE 3370
-----------	-----------



MIRL Rwy 13-31

	SITOC	TAROY 6 NM to ZASKA	ZASKA	SOKNE 3.1 NM to RWY 13	9000	FEPOL
	8700	7700	5800	4420		
Procedure Turn NA		125°	3.06° TCH 55			
	6.1 NM	6 NM	4.2 NM	3.1 NM		
CATEGORY	A	B	C	D		
LNAV MDA	4080-1	710 (800-1)	4080-2 710 (800-2)	4080-2 1/4 710 (800-2 1/4)		
CIRCLING	4080-1	708 (800-1)	4080-2 708 (800-2)	4220-2 3/4 848 (900-2 3/4)		

BAKER CITY, OREGON  
Orig-A 12208

44°50'N-117°49'W

# RNAV (GPS) RWY 13

BAKER CITY MUNI (BKE)