

VORTAC CEC 109.0 Chan 27	APP CRS 126°	Rwy Idg 5000 THRE 57 Apt Elev 61
---------------------------------------	------------------------	---

VOR/DME RWY 11

CRESCENT CITY/JACK MC NAMARA FIELD (CEC)

⚠ Circling to Rwy 17 NA at night. When VGS1 inop, Circling Rwy 29 and 35 NA at night. VDP NA with Brookings altimeter setting. When local altimeter setting not received, use Brookings altimeter setting and increase all MDA 100 feet and increase S-11 Cat C/D and Circling Cat D increases 1/4 mile. Inoperative table does not apply to Cat D.

MALSR

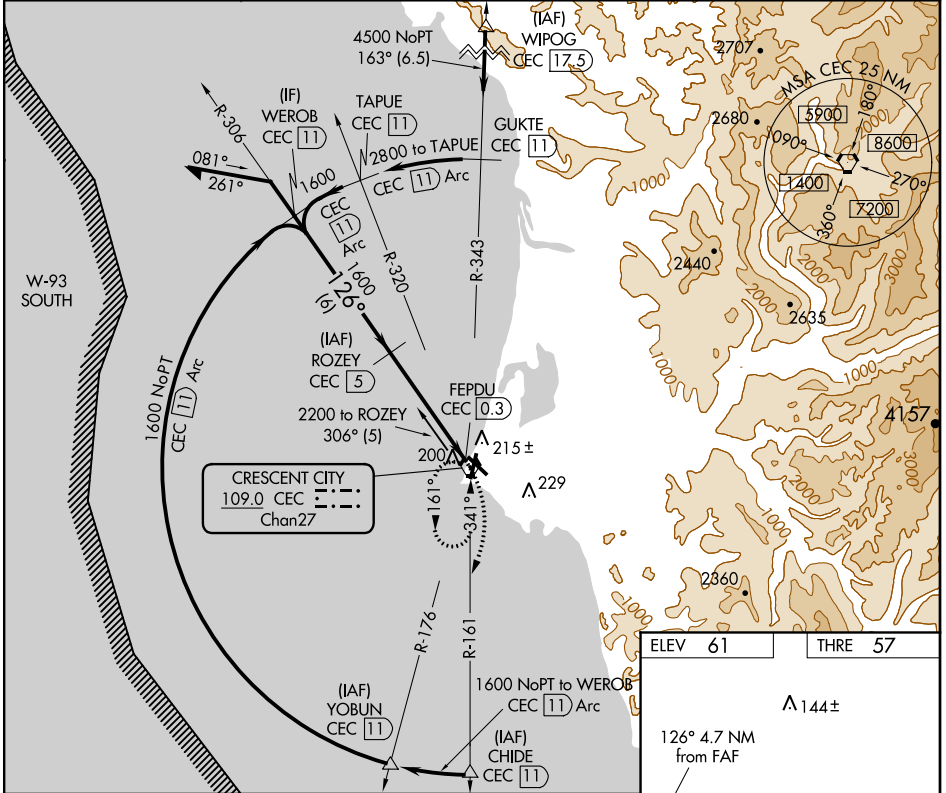
MISSED APPROACH: Climbing right turn to 3000 on CEC VORTAC R-161 then right turn direct CEC VORTAC and hold.

ASOS
119.925

SEATTLE CENTER
124.85 306.3

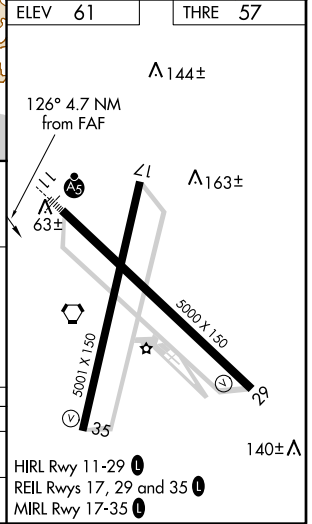
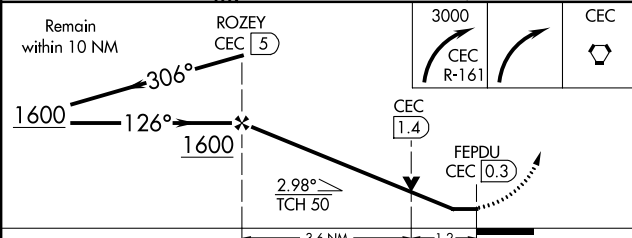
OAKLAND RADIO
122.3

UNICOM
122.8 (CTAF)



SW-2, 07 FEB 2013 to 07 MAR 2013

SW-2, 07 FEB 2013 to 07 MAR 2013



CATEGORY	A	B	C	D
S-11	480-3/4	423 (500-3/4)	480-1 423 (500-1)	480-1 1/4 423 (500-1 1/4)
CIRCLING	540-1 1/4	479 (500-1 1/4)	540-1 3/4 479 (500-1 3/4)	640-2 579 (600-2)

HIRL Rwy 11-29

REIL Rws 17, 29 and 35

MIRL Rwy 17-35