


VORTAC CEC 109.0 Chan 27	APP CRS 126°	Rwy ldg THRE Apt Elev 5000 57 61
---------------------------------------	------------------------	--

VOR RWY 11

CRESCENT CITY/ JACK MC NAMARA FIELD (C/E/C)

⚠ Circling to Rwy 17 NA at night. When VGSI inop, Circling Rwy 29 and 35 NA at night. Inoperative table does not apply to Cat D. When local altimeter setting not received, use Brookings altimeter setting and increase all MDA 100 feet; increase S-11 Cat C/D and Circ Cat D visibilities $\frac{1}{4}$ mile and Circ Cat C visibility $\frac{1}{2}$ mile. For inoperative MALSRS increase S-11 Cat C visibility to $1\frac{3}{8}$ miles. For inoperative MALSRS when using Brookings altimeter setting, increase Cat C visibility to $1\frac{3}{8}$ miles.

MALSRS 

MISSED APPROACH: Climbing right turn to 3000 on CEC VORTAC R-161 then right turn direct CEC VORTAC and hold.

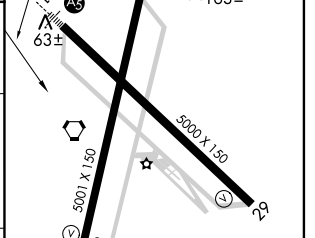
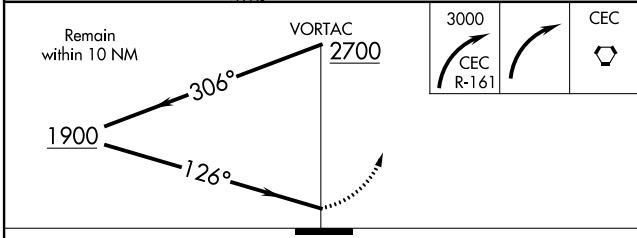
ASOS 119.925	SEATTLE CENTER 124.85 306.3	OAKLAND RADIO 122.3	UNICOM 122.8 (CTAF) 
------------------------	---------------------------------------	-------------------------------	---




SW-2, 07 FEB 2013 to 07 MAR 2013

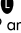
SW-2, 07 FEB 2013 to 07 MAR 2013

ELEV 61	THRE 57
$\Delta 144 \pm$	



CATEGORY	A	B	C	D
S-11	520- $\frac{3}{4}$	463 (500- $\frac{3}{4}$)	520- $1\frac{1}{8}$ 463 (500- $1\frac{1}{8}$)	520- $1\frac{1}{8}$ 463 (500- $1\frac{1}{8}$)
CIRCLING	540- $1\frac{1}{4}$	479 (500- $1\frac{1}{4}$)	540- $1\frac{3}{4}$ 479 (500- $1\frac{3}{4}$)	640-2 579 (600-2)

HIRL Rwy 11-29 

MIRL Rwy 17-35 

REIL Rws 17, 29 and 35 