

WAAS CH 72927 W35A	APP CRS 357°	Rwy Idg THRE Apt Elev 61	5001 51 61
--	------------------------	--	---------------------------------------

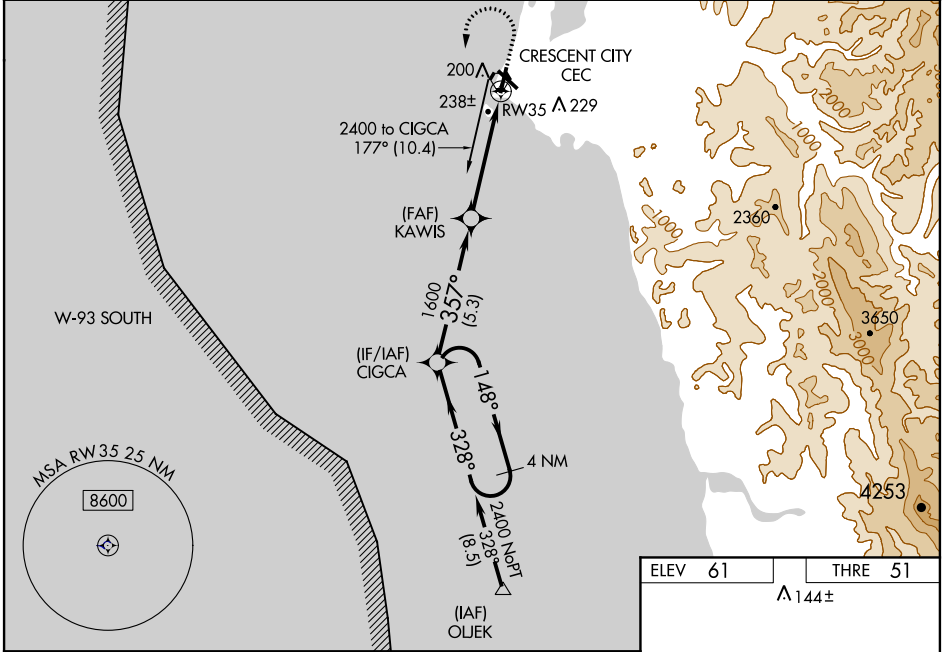
RNAV (GPS) RWY 35

CRESCENT CITY/ JACK MC NAMARA FIELD (C/C)

⚠ Circling to Rwy 17 NA at night. When VGSI inop, Circling Rwy 29 NA at night. Baro-VNAV NA when using Brookings altimeter setting. For uncompensated Baro-VNAV systems, LNAV/VNAV NA below -15°C (5°F) or above 43°C (109°F). When VGSI inop, Straight-in/Circling Rwy 35 procedure NA at night. DME/DME RNP-0.3 NA. Visibility reduction by helicopters NA. When local altimeter setting not received, use Brookings altimeter setting and increase all DA 97 feet and all MDA 100 feet; increase LPV all Cats and Circ Cat C visibilities 1/8 mile, LNAV/VNAV all Cats visibility 3/8 mile, and LNAV Cats C/D and Circ Cat D visibilities 1/4 mile.

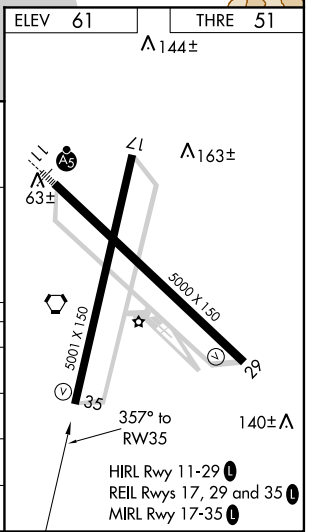
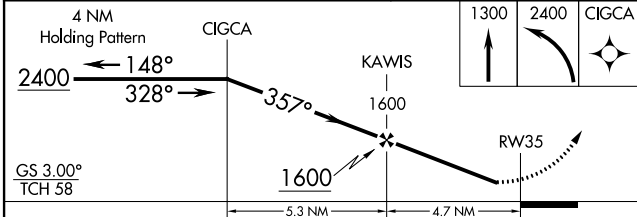
MISSED APPROACH: Climb to 1300 then climbing left turn to 2400 direct CIGCA and hold.

ASOS 119.925	SEATTLE CENTER 124.85 306.3	OAKLAND RADIO 122.3	UNICOM 122.8 (CTAF)
------------------------	---------------------------------------	-------------------------------	-------------------------------



SW-2, 07 FEB 2013 to 07 MAR 2013

SW-2, 07 FEB 2013 to 07 MAR 2013



CATEGORY	A	B	C	D
LPV DA		301-1	250 (300-1)	
LNAV/VNAV DA		404-1 1/8	353 (400-1 1/8)	
LNAV MDA	500-1	449 (500-1)	500-1 3/8	449 (500-1 3/8)
CIRCLING	540-1	479 (500-1)	540-1 1/2	640-2
			479 (500-1 1/2)	579 (600-2)