

WAAS CH <b>90310</b> W11A	APP CRS <b>117°</b>	Rwy Idg THRE Apt Elev	<b>5000</b> <b>57</b> <b>61</b>
---------------------------------	------------------------	-----------------------------	---------------------------------------

# RNAV (GPS) RWY 11

CRESCENT CITY/ JACK MC NAMARA FIELD (C/C)

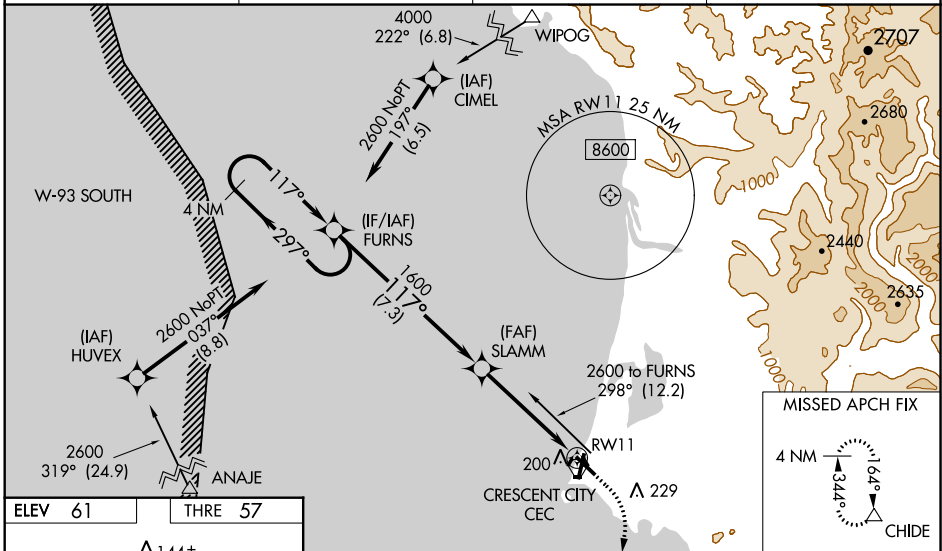
⚠ Circling to Rwy 17 NA at night. When VGSi inop, Circling Rwy 29 and 35 NA at night.  
 ⚠ Inoperative table does not apply to Cat D. Baro-VNAV NA when using Brookings altimeter setting. For uncompensated Baro-VNAV systems, LNAV/VNAV NA below -15°C (5°F) or above 43°C (109°F). DME/DME RNP-0.3 NA. VDP NA with Brookings altimeter setting. When local altimeter setting not received, use Brookings altimeter setting and increase all DA 97 feet and all MDA 100 feet; increase LPV Cat D visibility 1/8 mile, LNAV-VNAV Cat A/B/C, LNAV Cat D, and Circling Cat D visibilities 1/4 mile, and LNAV-VNAV Cat D visibility 3/8 mile. For inoperative MALS, increase LNAV-VNAV Cat A/B/C visibility to 1 mile and LNAV Cat C visibility to 1 1/8 miles. For inoperative MALS when using Brookings altimeter setting, increase LPV Cat A/B/C visibility to 7/8 mile and LNAV Cat C visibility to 1 3/8 miles.

MALS



MISSED APPROACH:  
 Climb to 500 then climbing right turn to 3000 direct CHIDE and hold, continue climb-in-hold to 3000.

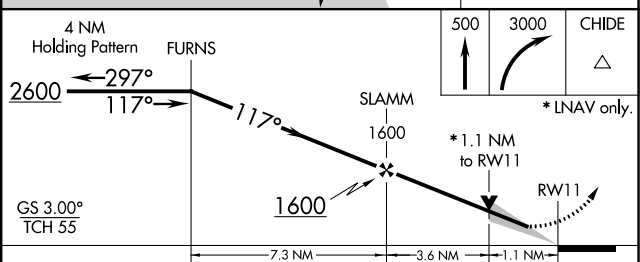
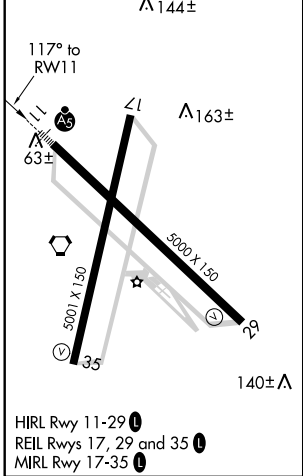
ASOS <b>119.925</b>	SEATTLE CENTER <b>124.85 306.3</b>	OAKLAND RADIO <b>122.3</b>	UNICOM <b>122.8 (CTAF)</b>
------------------------	---------------------------------------	-------------------------------	-------------------------------



SW-2, 07 FEB 2013 to 07 MAR 2013

SW-2, 07 FEB 2013 to 07 MAR 2013

ELEV 61	THRE 57
---------	---------



CATEGORY	A	B	C	D
LPV DA	257-3/4 200 (200-3/4)			
LNAV/VNAV DA	381-3/4 324 (400-3/4)			381-1 324 (400-1)
LNAV MDA	460-3/4 403 (400-3/4)	460-1 403 (400-1)		460-1 1/8 403 (400-1 1/8)
CIRCLING	540-1 1/4 479 (500-1 1/4)	540-1 3/4 479 (500-1 3/4)		640-2 579 (600-2)