

LOC I-CEC 108.7	APP CRS 117°	Rwy Idg THRE Apt Elev	5000 57 61
---------------------------	------------------------	-----------------------------	---------------------------------------

ILS or LOC/DME RWY 11

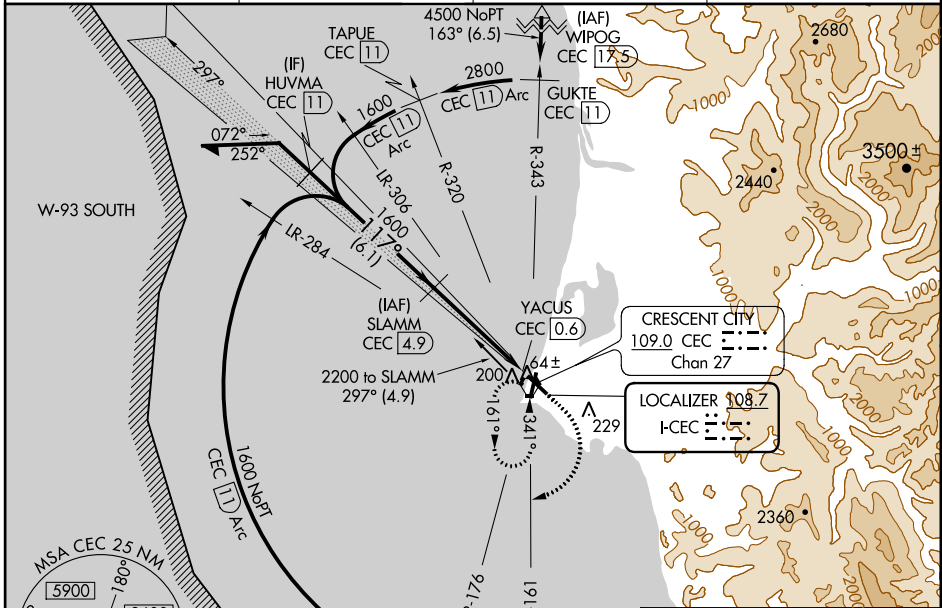
CRESCENT CITY/ JACK MC NAMARA FIELD (C/EC)

⚠ Circling to Rwy 17 NA at night. When VGS1 inop, Circling Rwy 29 and 35 NA at night.
⚠ Inoperative table does not apply to Cat D. When local altimeter setting not received, use Brookings altimeter setting and increase all DA 97 feet and all MDA 100 feet; increase S-ILS 11 Cat D, S-LOC 11 Cat C/D, and Circling Cat D visibilities ¼ mile. For inoperative MALSRS, when using Brookings altimeter setting, increase S-ILS 11 Cat A/B/C visibility to 1 mile. Simultaneous reception of I-CEC and CEC DME required. DME from CEC VORTAC.

MALSRS

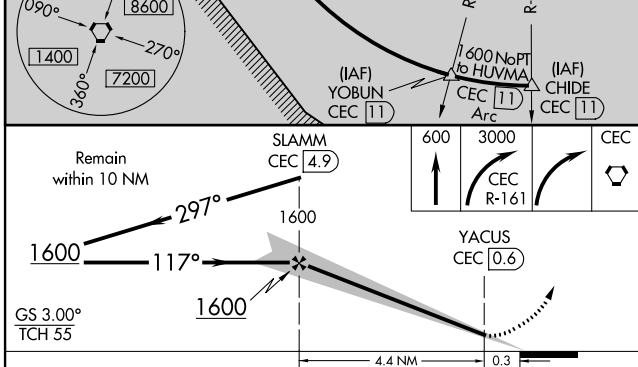
MISSED APPROACH:
 Climb to 600 then climbing right turn to 3000 on CEC VORTAC R-161 then right turn direct CEC VORTAC and hold.

ASOS 119.925	SEATTLE CENTER 124.85 306.3	OAKLAND RADIO 122.3	UNICOM 122.8 (CTAF) 0
------------------------	---------------------------------------	-------------------------------	---------------------------------



SW-2, 07 FEB 2013 to 07 MAR 2013

SW-2, 07 FEB 2013 to 07 MAR 2013



ELEV 61	THRE 57
---------	---------

HIRL Rwy 11-29
REIL Rws 17, 29 and 35
MIRL Rwy 17-35

CATEGORY	A	B	C	D
S-ILS 11		257-¾	200 (200-¾)	
S-LOC 11		380-¾	323 (400-¾)	380-1 323 (400-1)
CIRCLING	540-1¼	479 (500-1¼)	540-1¾ 479 (500-1¾)	640-2 579 (600-2)