

VOR RWY 6

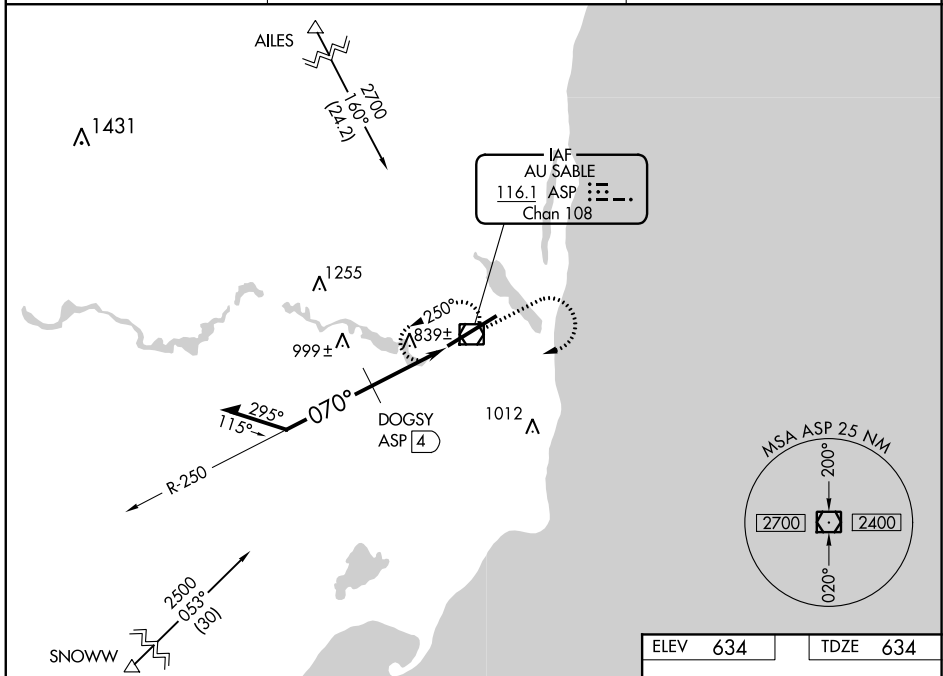
OSCODA-WURTSMITH (OSC)

VOR/DME ASP 116.1 Chan 108	APP CRS 070°	Rwy Idg 11,800 TDZE 634 Apt Elev 634
--	------------------------	---

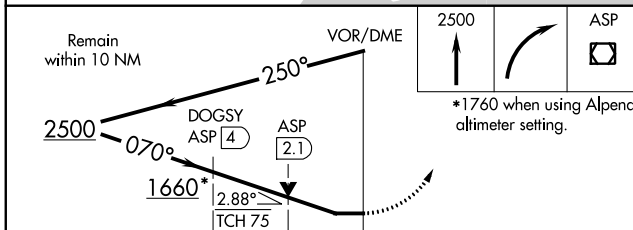
NA Circling NA southeast of Rwy 6 and 24. VDP NA when using Alpena altimeter setting. When local altimeter setting not received, use Alpena altimeter setting and increase all MDAs 100 feet and DOGSY Fix minimums visibility S-6/Circling Cat C ¼ mile, S-6 Cat D ¼ mile.

MISSED APPROACH: Climb to 2500 then right turn direct ASP VOR/DME and hold.

AWOS-3 118.7	MINNEAPOLIS CENTER 125.475 269.45	UNICOM 123.0 (CTAF) 0
------------------------	---	---------------------------------



ELEV 634	TDZE 634
-----------------	-----------------



CATEGORY	A	B	C	D
S-6	1660-1¼ 1026 (1100-1¼)	1660-1½ 1026 (1100-1½)	1660-3	1026 (1100-3)
CIRCLING	1660-1¼ 1026 (1100-1¼)	1660-1½ 1026 (1100-1½)	1660-3	1026 (1100-3)
DOGSY FIX MINIMUMS				
S-6	1100-1	466 (500-1)	1100-1¼ 466 (500-1¼)	1100-1½ 466 (500-1½)
CIRCLING	1140-1	506 (600-1)	1140-1½ 506 (600-1½)	1200-2 566 (600-2)

