

WAAS CH 97417 W06A	APP CRS 065°	Rwy Idg 11,800 TDZE 633 Apt Elev 633
--	------------------------	---

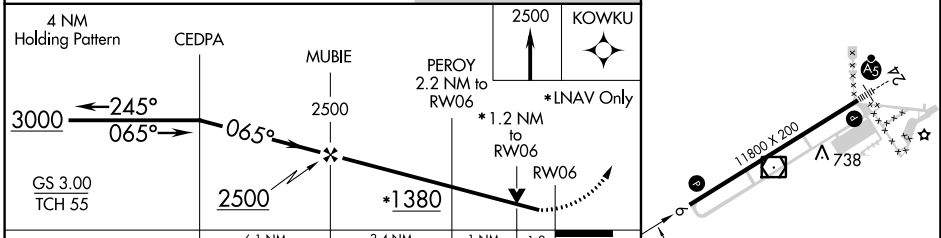
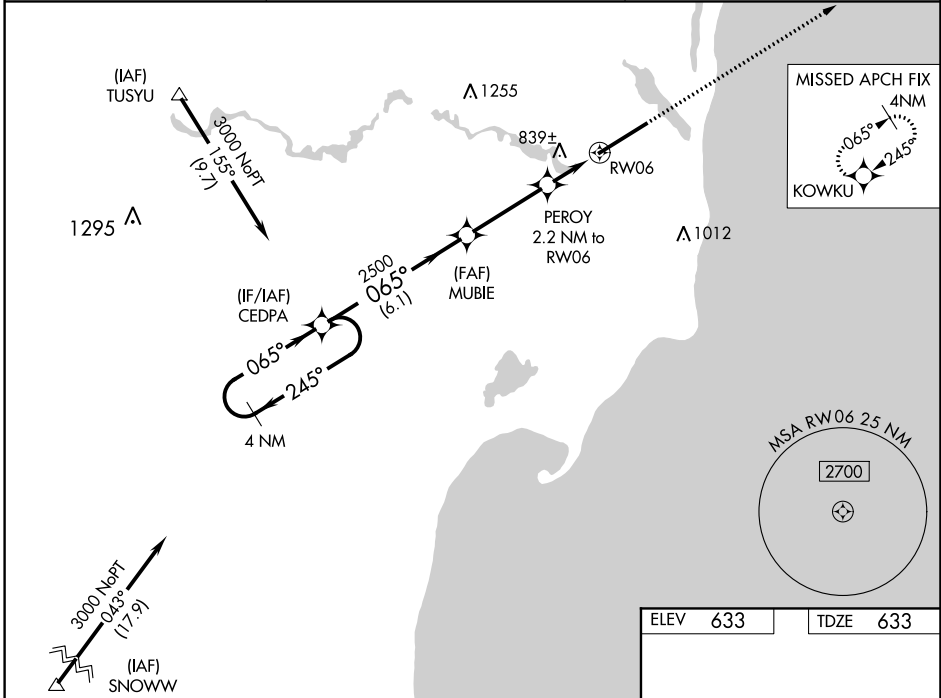
RNAV (GPS) RWY 6

OSCODA-WURTSMITH (OSC)

⚠ Circling NA southeast of Rwy 6-24. For uncompensated Baro-VNAV systems, LNAV/VNAV NA below -16°C (4°F) or above 47°C (116°F). DME/DME RNP-0.3 NA. Visibility reduction by helicopters NA.
⚠ VDP NA with Alpena altimeter setting. Baro-VNAV NA when using Alpena altimeter setting. When local altimeter setting not received use Alpena altimeter setting and increase all DA 96 feet and all MDA 100 feet and increase LPV and LNAV/VNAV all Cats visibility ½ mile, and LNAV Cat C and D and circling Cat C visibility ¼ mile.

MISSED APPROACH:
Climb to 2500 direct KOWKU and hold.

AWOS-3 118.7	MINNEAPOLIS CENTER 125.475 269.45	UNICOM 123.0 (CTAF)
------------------------	---	-------------------------------



CATEGORY	A	B	C	D
LPV DA	892-¾ 259 (300-¾)			
LNAV/DA VNAV	1148-1¾ 515 (600-1¾)			
LNAV MDA	1080-1	447 (500-1)	1080-1½ 447 (500-1½)	1080-1½ 447 (500-1½)
CIRCLING	1140-1	507 (600-1)	1140-1½ 507 (600-1½)	1200-2 567 (600-2)

ELEV 633	TDZE 633
----------	----------

The diagram shows the runway layout for RWY 6 and RWY 24. The runway is 11800 feet long and 200 feet wide. The HIRL RWY 6-24 is shown with a 065° heading to RW06. The diagram also shows the 738 altitude and the 11800 X 200 runway.

EC-1, 07 FEB 2013 to 07 MAR 2013

EC-1, 07 FEB 2013 to 07 MAR 2013