


WAAS CH 82317 W24A	APP CRS 245°	Rwy Idg 11,800 TDZE 624 Apt Elev 633
--	------------------------	---

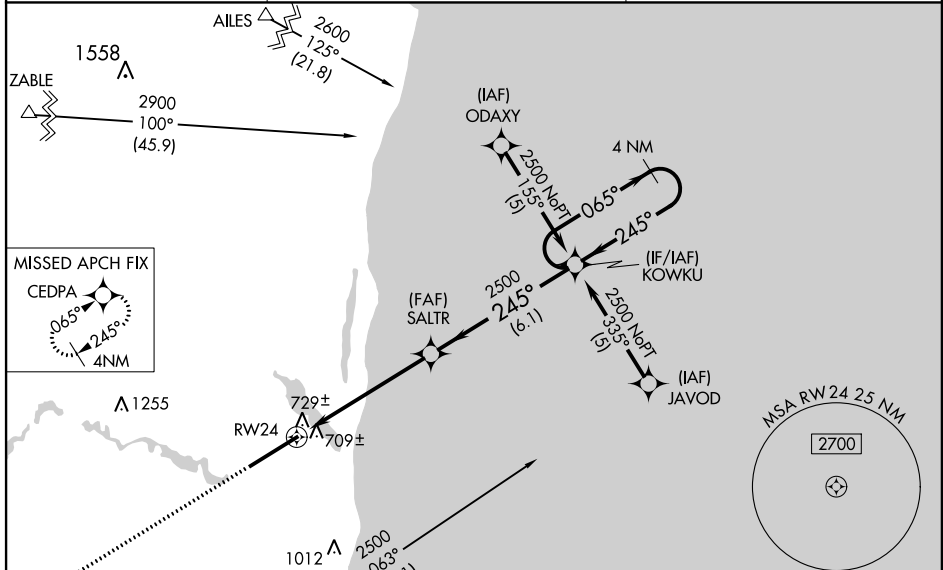
RNAV (GPS) RWY 24

OSCODA-WURTSMITH (OSC)

▼ Circling NA southeast of Rwy 6-24. For uncompensated Baro-VNAV systems, LNAV/VNAV NA below -16°C (4°F) or above 47°C (116°F). DME/DME RNP-0.3 NA. When local altimeter setting not received, use Alpena altimeter setting and increase all DA 96 feet and all MDA 100 feet and increase LNAV/VNAV all Cats visibility ½ mile, and increase LNAV and circling Cat C visibility ¼ mile. VDP NA with Alpena altimeter setting. Baro-VNAV NA when using Alpena altimeter setting. For inoperative MALSR, increase LNAV Cat D visibility to ¼ mile. For inoperative MALSR when using Alpena altimeter setting increase LPV all Cats visibility to 1 mile.

MALSR
 MISSED APPROACH:
 Climb to 3000 direct CEDPA and hold.

AWOS-3 118.7	MINNEAPOLIS CENTER 125.475 269.45	UNICOM 123.0 (CTAF) 0
------------------------	---	---------------------------------



3000 CEDPA
 VGSI and RNAV glidepath not coincident (VGSI Angle 3.00/TCH 72).
 4 NM Holding Pattern

* LNAV only
 * 0.9 MN to RWY 24

SALTR 2500 KOWKU 2500
 245° 065° 2500
 GS 3.00° TCH 56

0.9 4.7 NM 6.1 NM

ELEV 633	TDZE 624
----------	----------

HIRL Rwy 6-24 0

CATEGORY	A	B	C	D
LPV DA	824-½ 200 (200-½)			
LNAV/VNAV DA	1004-¾ 380 (400-¾)			
LNAV MDA	980-½ 356 (400-½)		980-1 356 (400-1)	
CIRCLING	1140-1 507 (600-1)		1140-1½ 507 (600-1½) 1200-2 567 (600-2)	

EC-1, 07 FEB 2013 to 07 MAR 2013

EC-1, 07 FEB 2013 to 07 MAR 2013