

LOC I-LJU <b>108.5</b>	APP CRS <b>245°</b>	Rwy ldg <b>11,800</b> TDZE <b>624</b> Apt Elev <b>633</b>
---------------------------	------------------------	---

# ILS or LOC/DME RWY 24

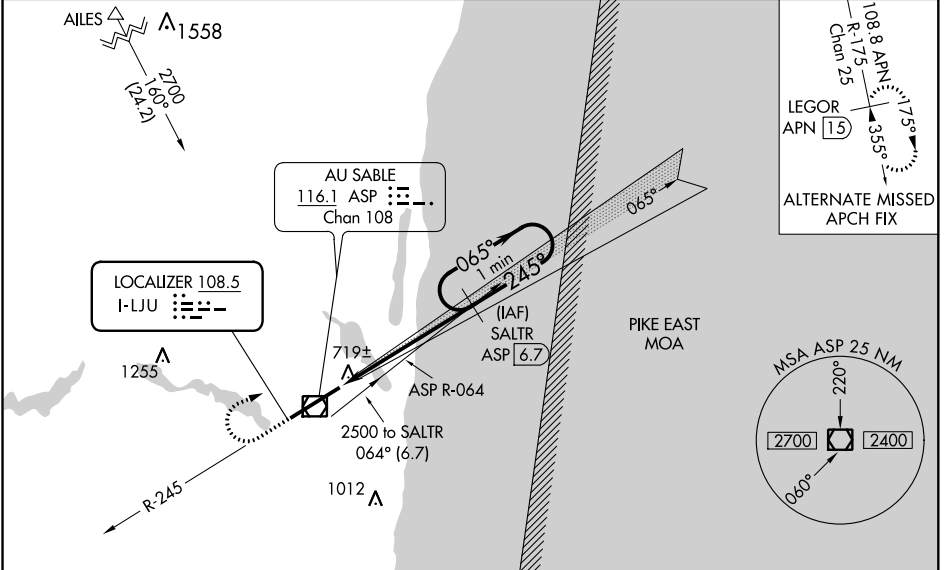
OSCODA-WURTSMITH (OSC)

**NA** Circling NA southeast of Rwy 6-24. DME from ASP VOR/DME. Simultaneous reception of I-LJU and ASP DME required. When local altimeter setting not received, use Alpena altimeter setting and increase all DA 96 feet and all MDA 100 feet and increase S-LOC 24 Cat C and D visibility ¼ mile, and increase circling Cat C visibility ¼ mile. For inoperative MALSR when using Alpena altimeter setting increase S-ILS all Cats visibility to 1 mile.



**MISSED APPROACH:** Climb to 1200 then climbing right turn to 2500 via heading 096° and ASP VOR/DME R-064 to SALTR/ASP 6.7 DME and hold.

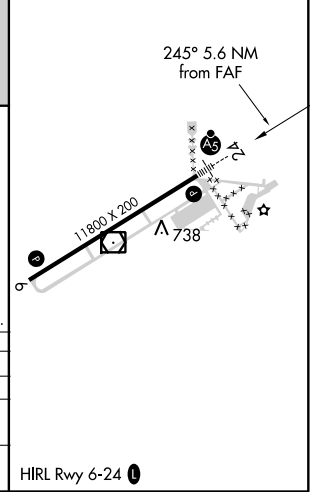
AWOS-3 <b>118.7</b>	MINNEAPOLIS CENTER <b>125.475 269.45</b>	UNICOM <b>123.0 (CTAF) 0</b>
------------------------	---	---------------------------------



EC-1, 07 FEB 2013 to 07 MAR 2013

EC-1, 07 FEB 2013 to 07 MAR 2013

ELEV 633	TDZE 624
----------	----------



1200	2500	SALTR ASP 6.7	One Minute Holding Pattern	
		SALTR ASP 6.7	2500	2500
		2500	065°	2500
		2500	245°	2500
		2500	GS 3.00°	TCH 56
VGSi and ILS glidepath not coincident.				
CATEGORY	A	B	C	D
S-ILS 24	824-½		200 (200-½)	
S-LOC 24	980-½		356 (400-½)	980-¾ 356 (400-¾)
CIRCLING	1140-1		507 (600-1)	1140-1½ 507 (600-1½)
				1200-2 567 (600-2)