

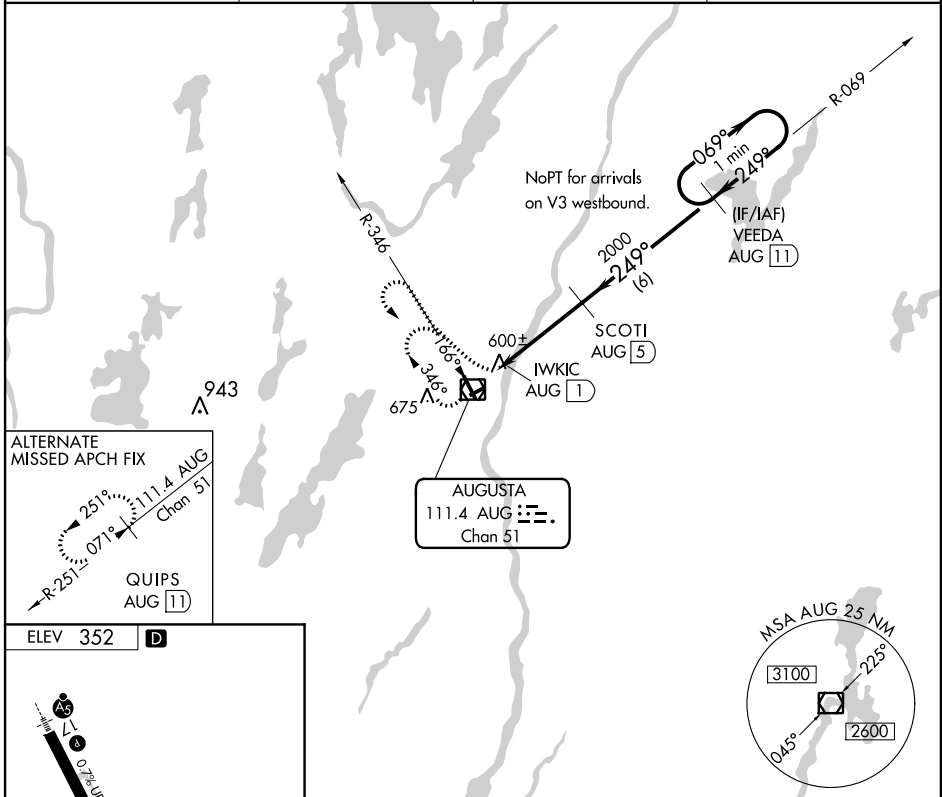
VOR/DME AUG 111.4 Chan 51	APP CRS 249°	Rwy Idg TDZE Apt Elev	N/A N/A 352
--	------------------------	-----------------------------	--

VOR/DME-A
AUGUSTA STATE (AUG)

▼ When local altimeter setting not received use Waterville altimeter setting and increase all MDA 40 feet. Circling w/ Rwy 8 and 26 NA at night. When VGSI inoperative, Circling Rwy 35 NA at night.

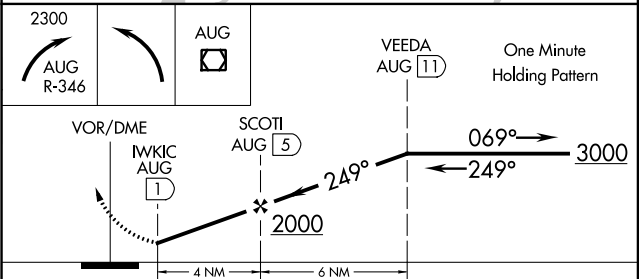
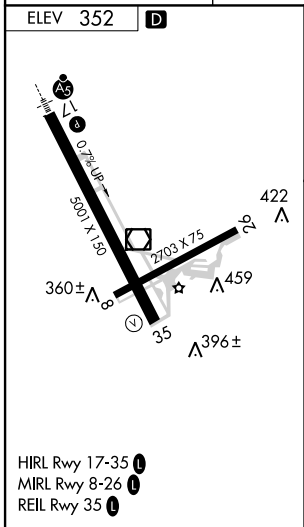
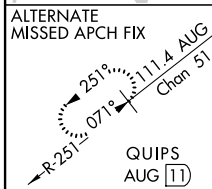
MISSED APPROACH: Climbing right turn to 2300 on AUG VOR/DME R-346, then left turn direct AUG VOR/DME and hold.

ASOS 118.325	PORTLAND APP CON ★ 128.35 299.2	CLNC DEL 119.95	UNICOM 123.0 (CTAF) 0
------------------------	---	---------------------------	---------------------------------



NE-1, 07 FEB 2013 to 07 MAR 2013

NE-1, 07 FEB 2013 to 07 MAR 2013



CATEGORY	A	B	C	D
CIRCLING	960-1 608 (700-1)	980-1 628 (700-1)	980-1¾ 628 (700-1¾)	980-2 628 (700-2)