

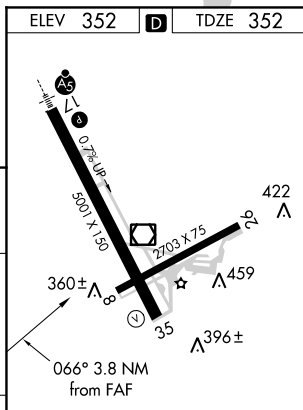
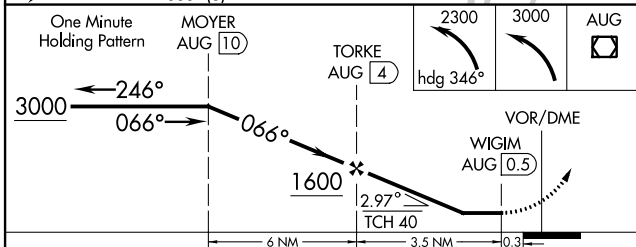
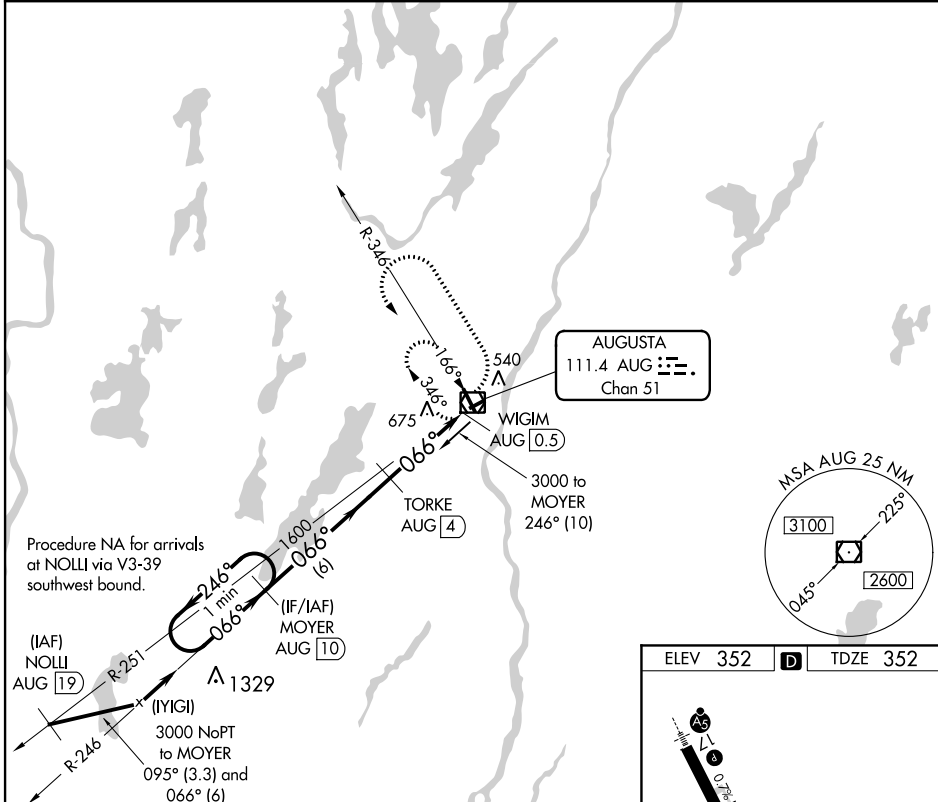
VOR/DME RWY 8 AUGUSTA STATE (AUG)

VOR/DME AUG 111.4 Chan 51	APP CRS 066°	Rwy Idg 2703 TDZE 352 Apt Elev 352
---	------------------------	---

▼ Visibility reduction by helicopters NA. When local altimeter setting not received, use Waterville altimeter setting and increase all MDA 40 feet and S-8 Cat C and D visibility ¼ mile.

MISSED APPROACH: Climbing left turn to 2300 via heading 346° then climbing left turn to 3000 direct AUG VOR/DME and hold.

ASOS 118.325	PORTLAND APP CON* 128.35 299.2	CLNC DEL 119.95	UNICOM 123.0 (CTAF) 0
------------------------	--	---------------------------	---------------------------------



CATEGORY	A	B	C	D
S-8	940-1 588 (600-1)	588 (600-1)	940-1½ 588 (600-1½)	940-1¼ 588 (600-1¼)
CIRCLING	940-1 588 (600-1)	980-1 628 (700-1)	980-1¾ 628 (700-1¾)	980-2 628 (700-2)

HIRL Rwy 17-35
MIRL Rwy 8-26
REIL Rwy 35

NE-1, 07 FEB 2013 to 07 MAR 2013

NE-1, 07 FEB 2013 to 07 MAR 2013