

VOR/DME AUG 111.4 Chan 51	APP CRS 166°	Rwy Idg THRE Apt Elev 352	5001 311 352
---	------------------------	--	---

VOR/DME RWY 17

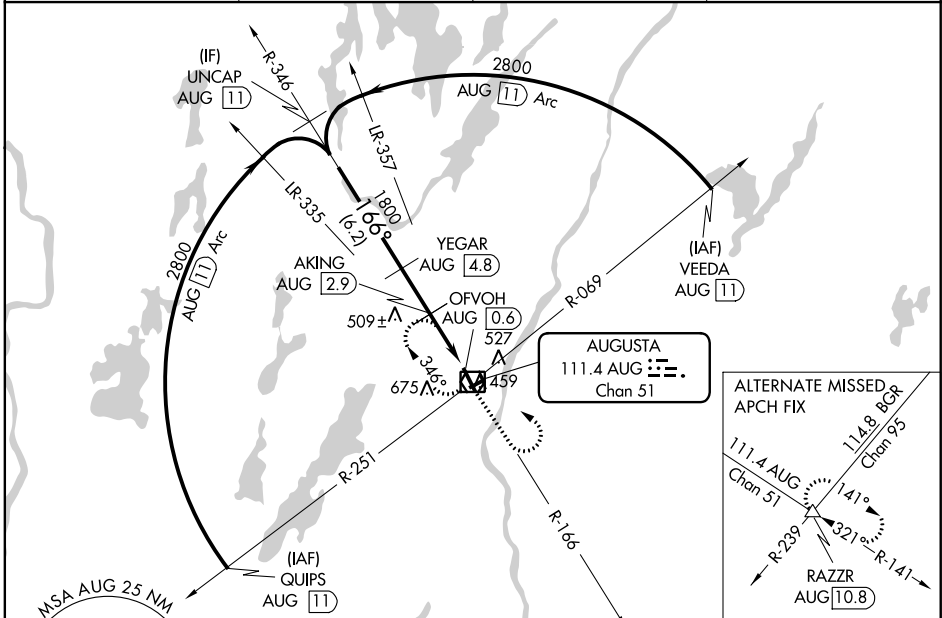
AUGUSTA STATE (AUG)

When local altimeter setting not received use Waterville altimeter setting and increase all MDA 40 feet; increase S-17 Cats C and D visibility $\frac{1}{8}$ mile. VDP NA with Waterville altimeter setting. Circling to Rwy 8 and 26 NA at night. When VGSI inoperative, Circling Rwy 35 NA at night.



MISSED APPROACH: Climb to 1500 on AUG VOR/DME R-166 then climbing left turn to 2300 direct AUG VOR/DME and hold.

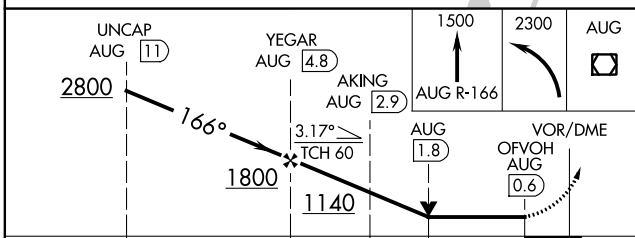
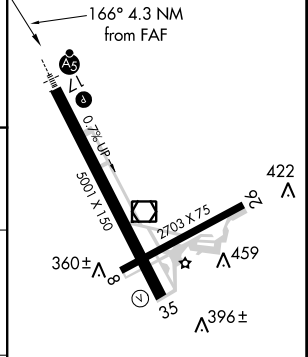
ASOS 118.325	PORTLAND APP CON* 128.35 299.2	CLNC DEL 119.95	UNICOM 123.0 (CTAF) 0
------------------------	--	---------------------------	---------------------------------



NE-1, 07 FEB 2013 to 07 MAR 2013

NE-1, 07 FEB 2013 to 07 MAR 2013

ELEV 352	D THRE 311
----------	-------------------



CATEGORY	A	B	C	D
S-17	760- $\frac{1}{2}$	449 (500- $\frac{1}{2}$)	760- $\frac{7}{8}$	449 (500- $\frac{7}{8}$)
CIRCLING	960-1 608 (700-1)	980-1 628 (700-1)	980-1 $\frac{3}{4}$ 628 (700-1 $\frac{3}{4}$)	980-2 628 (700-2)

- HIRL Rwy 17-35 0
- MIRL Rwy 8-26 0
- REIL Rwy 35 0