

APP CRS 260°	Rwy Idg TDZE Apt Elev	N/A N/A 352
------------------------	-----------------------------	--

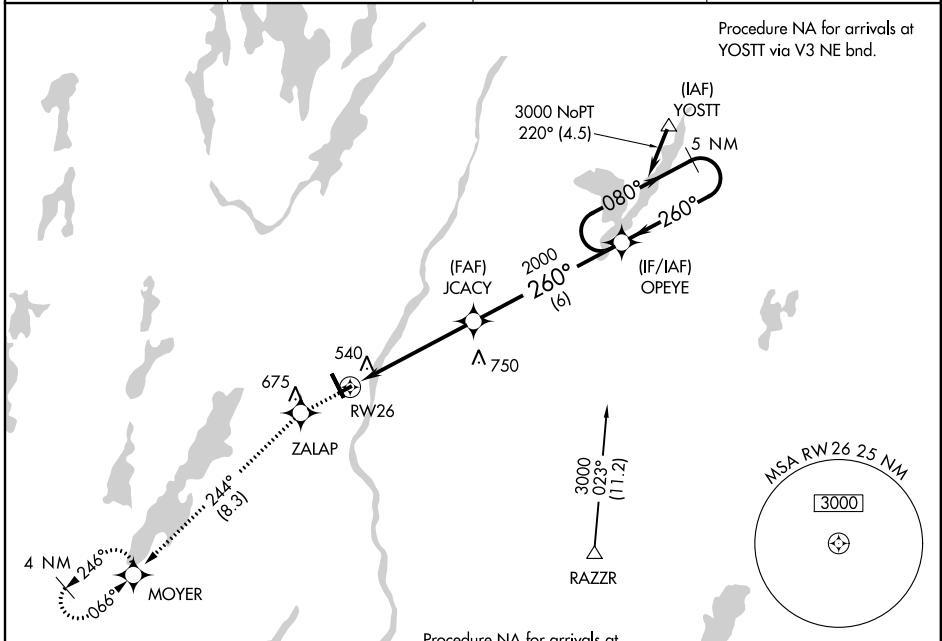
RNAV (GPS)-B

AUGUSTA STATE (AUG)

⚠ DME/DME RNP-0.3 NA.
⚠ If local altimeter setting not received, use Auburn-Lewiston Muni altimeter setting and increase all MDAs 80 feet.

MISSED APPROACH: Climb to 3000 direct ZALAP and via 244° track to MOYER and hold.

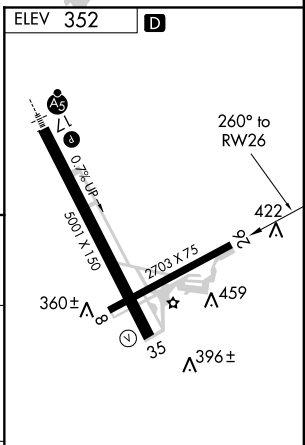
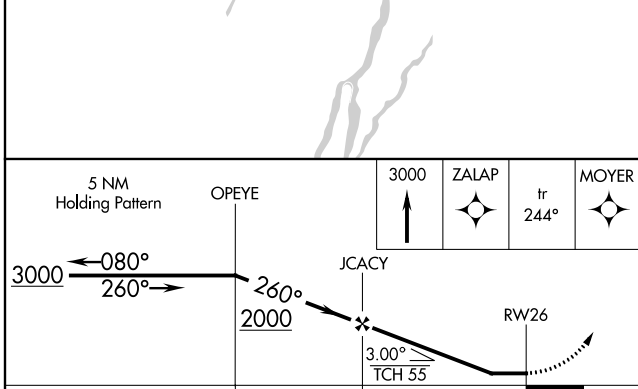
ASOS 118.325	PORTLAND APP CON* 128.35 299.2	CLNC DEL 119.95	UNICOM 123.0 (CTAF) 📻
------------------------	--	---------------------------	--



NE-1, 07 FEB 2013 to 07 MAR 2013

NE-1, 07 FEB 2013 to 07 MAR 2013

ELEV 352	D
----------	----------



CATEGORY	A	B	C	D
CIRCLING	880-1 528 (600-1)	980-1 628 (700-1)	980-1¾ 628 (700-1¾)	980-2 628 (700-2)

MIRL Rwy 8-26 **📻**
 HIRL Rwy 17-35 **📻**
 REIL Rwy 35 **📻**