

WAAS CH <b>70720</b> <b>W17A</b>	APP CRS <b>171°</b>	Rwy Idg <b>5001</b> THRE <b>311</b> Apt Elev <b>352</b>
-------------------------------------	---------------------	---

# RNAV (GPS) RWY 17

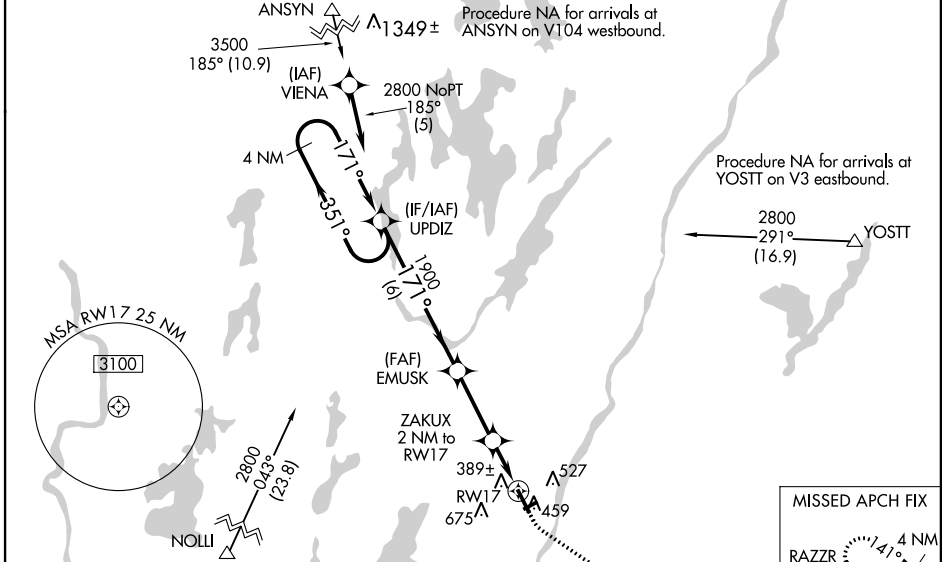
AUGUSTA STATE (AUG)

**▽** DME/DME RNP-0.3 NA. For inoperative MALSRR, increase LNAV/VNAV all Cats visibility to 1 mile. For inoperative MALSRR when using Waterville altimeter setting, increase LNAV/VNAV all Cats visibility to 1 1/8 mile. VDP and Baro-VNAV NA with Waterville altimeter setting. When local altimeter setting not received use Waterville altimeter setting and increase all DA 35 feet and all MDA 40 feet; increase LNAV/VNAV all Cats and LNAV Cats C and D visibility 1/8 mile. For uncompensated Baro-VNAV systems, LNAV/VNAV NA below -30°C (-22°F) or above 41°C (105°F). Circling to Rwy 8 and 26 NA at night. When VGSI inoperative, Circling Rwy 35 NA at night.



**MISSED APPROACH:**  
Climb to 800 then climbing left turn to 3000 direct RAZZR and hold.

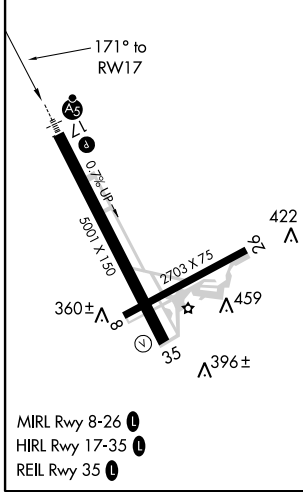
ASOS <b>118.325</b>	PORTLAND APP CON* <b>128.35 299.2</b>	CLNC DEL <b>119.95</b>	UNICOM <b>123.0 (CTAF) ①</b>
---------------------	---------------------------------------	------------------------	------------------------------



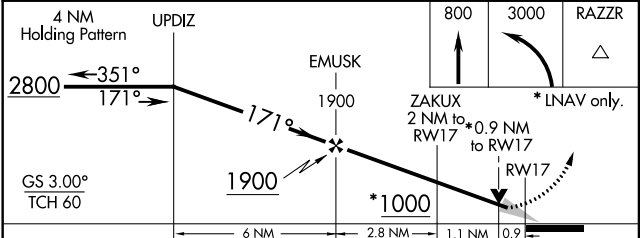
NE-1, 07 FEB 2013 to 07 MAR 2013

NE-1, 07 FEB 2013 to 07 MAR 2013

ELEV 352	<b>D</b>	THRE 311
----------	----------	----------



Procedure NA for arrivals at NOLL on V3-39 westbound.



CATEGORY	A	B	C	D
LPV DA		511-1/2	200 (200-1/2)	
LNAV/VNAV DA		638-5/8	327 (300-5/8)	
LNAV MDA		640-1/2	329 (300-1/2)	
CIRCLING	960-1 608 (700-1)	980-1 628 (700-1)	980-1 3/4 628 (700-1 3/4)	980-2 628 (700-2)