


LOC I-AUG 108.7	APP CRS 171°	Rwy Idg THRE Apt Elev	5001 311 352
---------------------------	------------------------	-----------------------------	---

ILS or LOC RWY 17

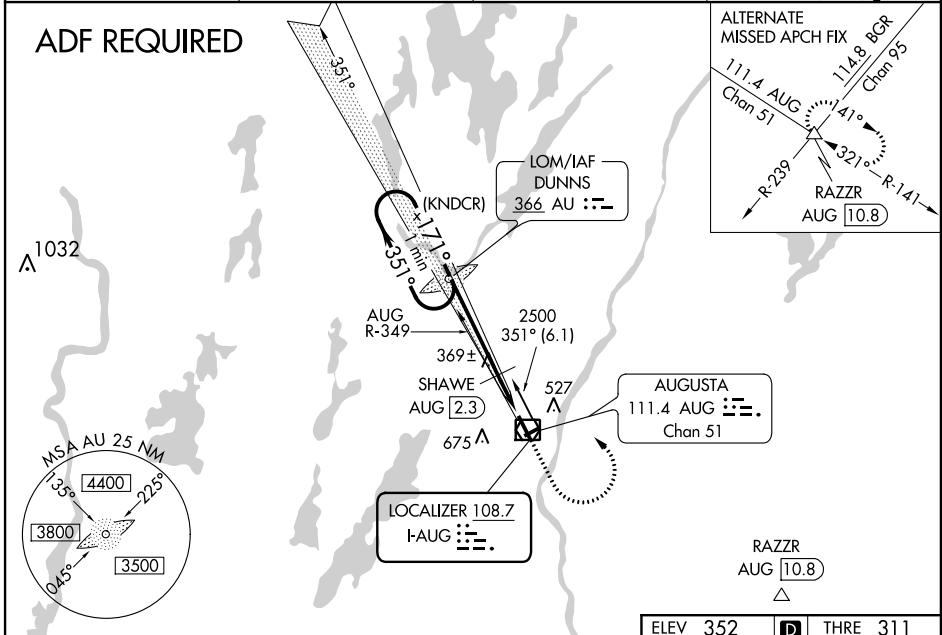
AUGUSTA STATE (AUG)

ADF Required. Localizer unusable from 0.5 NM to threshold above 1500 feet. When VGSI inop, Circling Rwy 8 and Rwy 26 NA at night. When local altimeter setting not received, use Waterville altimeter setting: increase S-ILS 17 DA to 546; increase all MDA 40 feet and S-LOC 17 Cat C/D visibility 1/2 mile; SHAWE fix minimums increase Cat C/D visibility 1/2 mile. Glideslope unusable below 430 feet. % DME from AUG VOR/DME

MALSR 

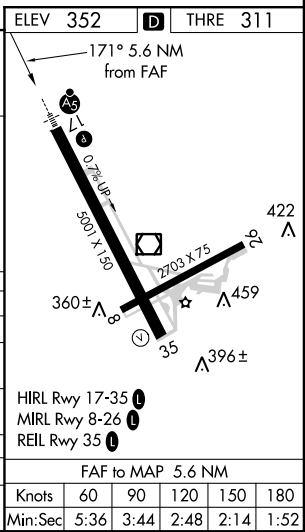
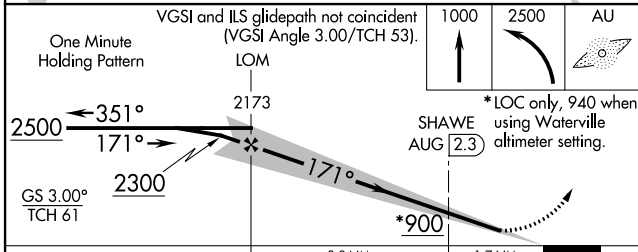
MISSED APPROACH: Climb to 1000 then climbing left turn to 2500 direct DUNNS LOM and hold.

ASOS 118.325	PORTLAND APP CON* 128.35 299.2	CLNC DEL 119.95 299.2	UNICOM 123.0 (CTAF)
------------------------	--	---------------------------------	-------------------------------



NE-1, 07 FEB 2013 to 07 MAR 2013

NE-1, 07 FEB 2013 to 07 MAR 2013



CATEGORY	A	B	C	D
S-ILS 17	511-1/2 200 (200-1/2)			
S-LOC 17	900-1/2	589 (600-1/2)	900-1 1/4	589 (600-1/4)
CIRCLING	900-1 548 (600-1)	980-1 628 (700-1)	980-1 3/4 628 (700-1 3/4)	980-2 628 (700-2)
SHAWE FIX MINIMUMS %				
S-LOC 17	620-1/2 309 (300-1/2)			
CIRCLING	880-1 528 (600-1)	980-1 628 (700-1)	980-1 3/4 628 (700-1 3/4)	980-2 628 (700-2)