

APP CRS	Rwy Idg	3407
108°	TDZE	422
	Apt Elev	423

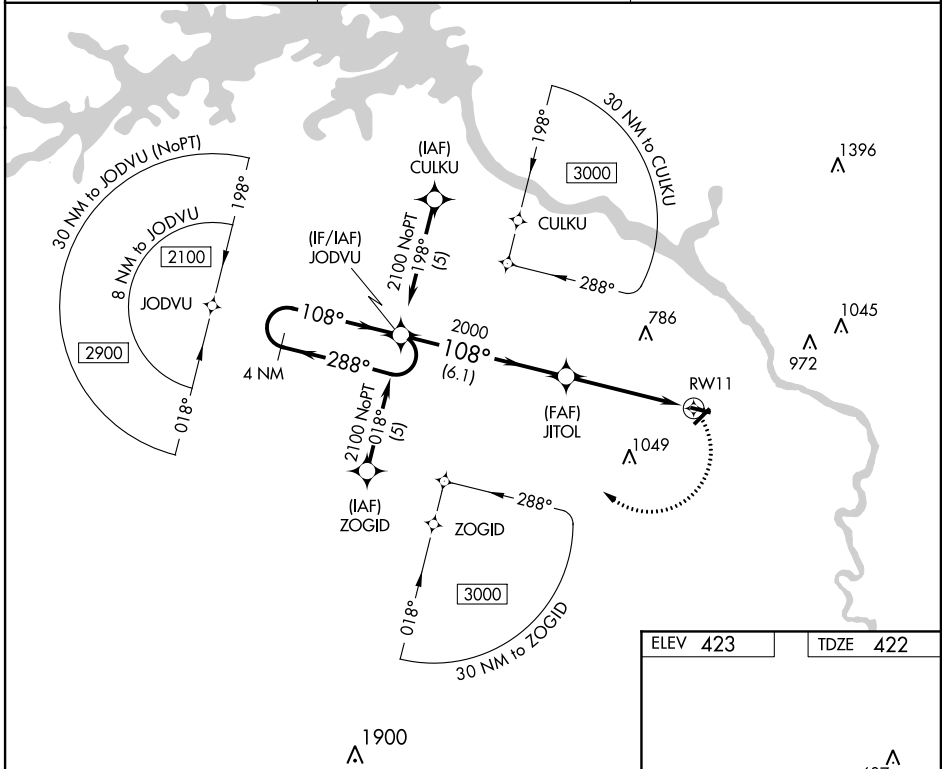
RNAV (GPS) RWY 11

AUGUSTA/DANIEL FIELD (DNL)

▽ DME/DME RNP-0.3 NA. Visibility reduction by helicopters NA.
△ When local altimeter setting not received, use Augusta Rgnl at Bush Field altimeter setting and increase all MDA 60 feet and increase LNAV Cat C and D and Circling Cat C visibility 1/4 mile.
 ASR

MISSED APPROACH: Climbing right turn to 2100 direct JODVU and hold.

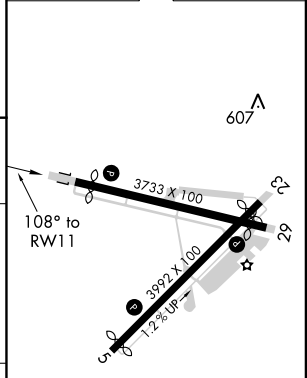
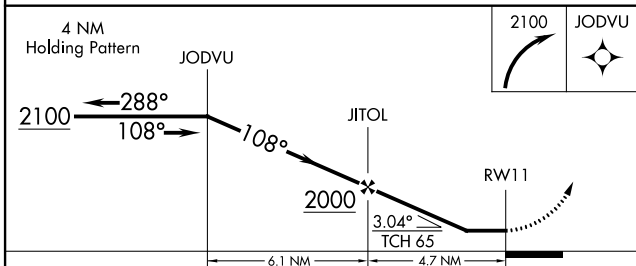
ASOS 135.275	AUGUSTA APP CON ★ 126.8 270.3	UNICOM 123.05 (CTAF) 0
------------------------	---	----------------------------------



SE-4, 07 FEB 2013 to 07 MAR 2013

SE-4, 07 FEB 2013 to 07 MAR 2013

ELEV 423	TDZE 422
----------	----------



CATEGORY	A	B	C	D
LNAV MDA	980-1	558 (600-1)	980-1½ 558 (600-½)	980-1¾ 558 (600-¾)
CIRCLING	980-1	557 (600-1)	980-1½ 557 (600-½)	980-2 557 (600-2)

REIL Rwy 11 and 29 **0**
 MRL Rwy 5-23 and 11-29 **0**