

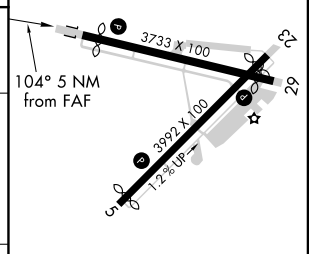
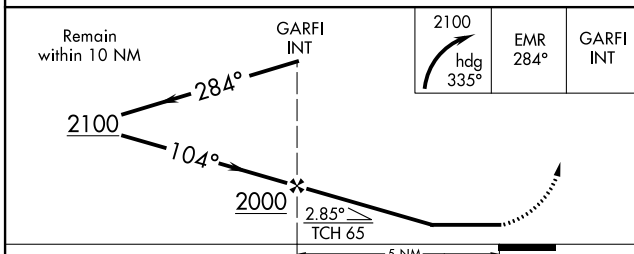
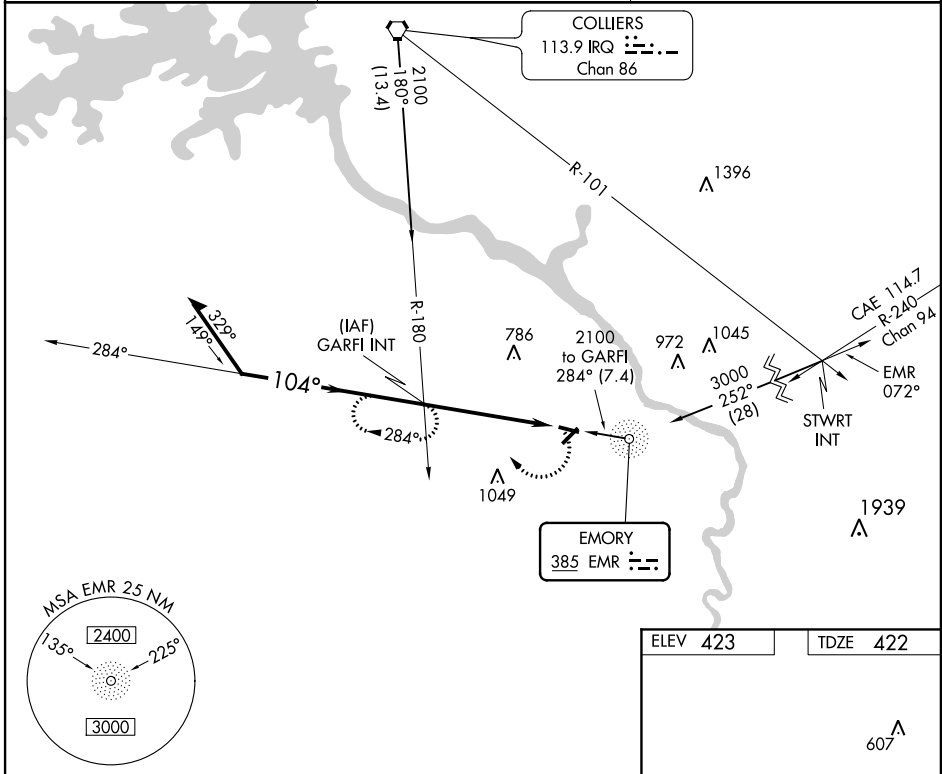
NDB EMR 385	APP CRS 104°	Rwy Idg TDZE Apt Elev	3407 422 423
-----------------------	------------------------	-----------------------------	---

NDB RWY 11
AUGUSTA/ DANIEL FIELD (DNL)

ASR Visibility reduction by helicopters NA. When local altimeter setting not received, use Augusta Rgnl at Bush Field altimeter setting and increase all MDA 60 feet and increase S-11 and Circling Cats C and D visibility 1/4 mile.

MISSED APPROACH: Climbing right turn to 2100 heading 335° and EMR 284° bearing to GARFI INT and hold.

ASOS 135.275	AUGUSTA APP CON * 126.8 270.3	UNICOM 123.05 (CTAF) 0
------------------------	---	----------------------------------



CATEGORY	A	B	C	D	REIL Rwy 11 and 29 MRL Rwy 5-23 and 11-29 FAF to MAP 5 NM					
S-11	1040-1	618 (700-1)	1040-1 3/4 618 (700-1 3/4)	1040-2 618 (700-2)						
CIRCLING	1040-1	617 (700-1)	1040-1 3/4 617 (700-1 3/4)	1040-2 617 (700-2)						
					Knots	60	90	120	150	180
					Min:Sec	5:00	3:20	2:30	2:00	1:40

SE-4, 07 FEB 2013 to 07 MAR 2013

SE-4, 07 FEB 2013 to 07 MAR 2013