

VORTAC IRQ	APP CRS	Rwy Idg	<b>8001</b>
<b>113.9</b>	<b>157°</b>	THRE	<b>144</b>
Chan <b>86</b>		Apt Elev	<b>144</b>

# VOR/DME RWY 17

AUGUSTA RGNL AT BUSH FIELD (AGS)

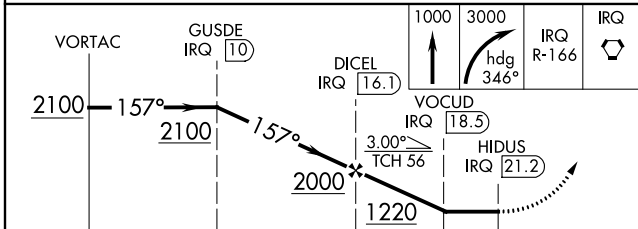
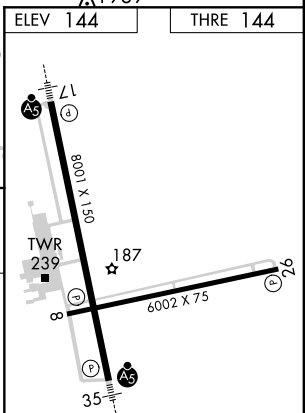
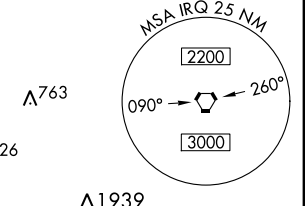
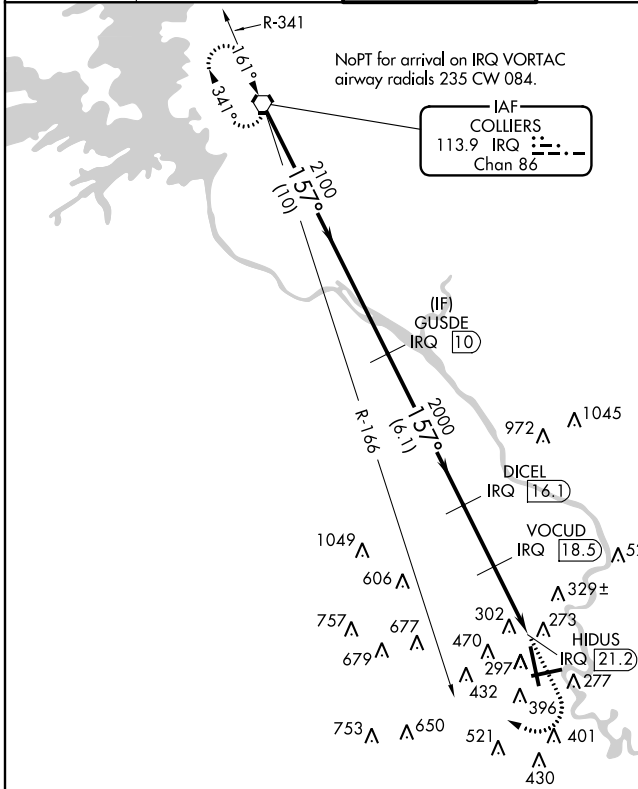
**ASR** When local altimeter setting not received, use Daniel Field altimeter setting and increase all MDA 60 feet; increase S-17 Cats C/D visibility 1/8 mile and Circling Cats C/D visibility 1/4 mile. When VGSI inop, Circling Rwy 8 NA at night. For inoperative MALSR, increase S-17 Cat A/B visibility to 1 mile and Cat C/D visibility to 1 1/2 mile. For inoperative MALSR when using Daniel Field altimeter setting, increase S-17 Cat A/B visibility to 1 mile and Cat C/D visibility to 1 1/4 .

MALSR



**MISSED APPROACH:** Climb to 1000 then climbing right turn to 3000 on heading 346° and IRQ VORTAC R-166 to IRQ VORTAC and hold.

ATIS	AUGUSTA APP CON *	AUGUSTA TOWER *	GND CON	CLNC DEL	UNICOM
<b>132.75</b>	<b>126.8 270.3</b>	<b>118.7 (CTAF) 0 239.3</b>	<b>121.9 348.6</b>	<b>121.9</b>	<b>122.95</b>



CATEGORY	A	B	C	D
S-17	720/40	576 (600-3/4)	720-1 1/4	576 (600-1 1/4)
CIRCLING	780-1 636 (700-1)	780-1 1/4 636 (700-1 1/4)	780-1 3/4 636 (700-1 3/4)	780-2 636 (700-2)

MIRL Rwy 8-26  
HIRL Rwy 17-35  
REIL Rws 8 and 26

SE-4, 07 FEB 2013 to 07 MAR 2013

SE-4, 07 FEB 2013 to 07 MAR 2013