

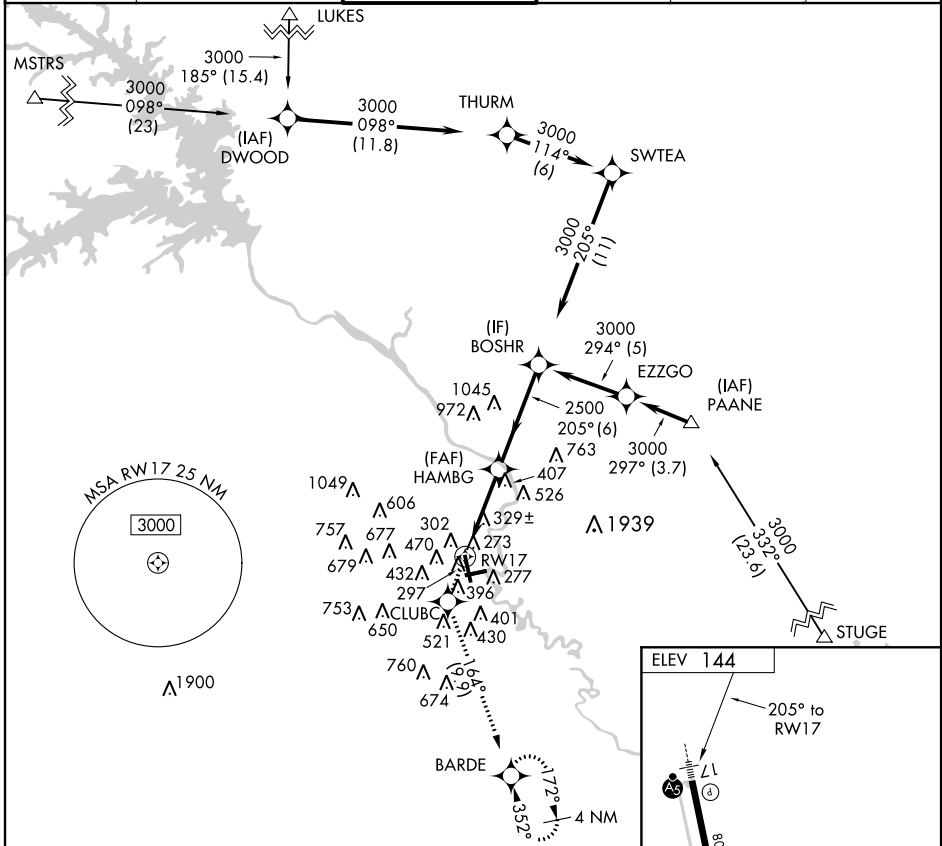
APP CRS 205°	Rwy Idg TDZE Apt Elev	N/A N/A 144
------------------------	-----------------------------	--

RNAV (GPS)-A

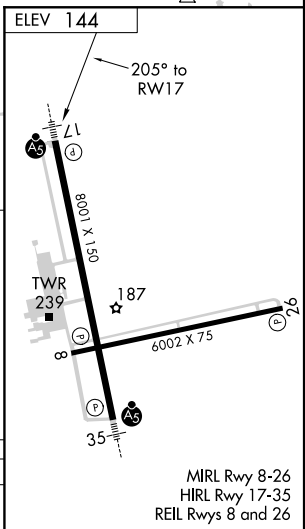
AUGUSTA RGNL AT BUSH FIELD (AGS)

<p>ASR</p> <p>Circling to Rwy 8 NA at night. When VGSI inoperative, Circling Rwy 26 NA at night. DME/DME RNP-0.3 NA.</p>	<p>MISSED APPROACH: Climb to 2100 direct CLUBC and on track 164° to BARDE and hold.</p>
---	--

ATIS 132.75	AUGUSTA APP CON ★ 126.8 270.3	AUGUSTA TOWER ★ 118.7 (CTAF) 0 239.3	GND CON 121.9 348.6	CLNC DEL 121.9	UNICOM 122.95
-----------------------	---	--	-------------------------------	--------------------------	-------------------------



2100	CLUBC	tr 164°	BARDE	BOSHHR	Procedure Turn NA
CATEGORY	A	B	C	D	
CIRCLING	780-1	636 (700-1)	780-1¾ 636 (700-1¾)	780-2 636 (700-2)	



MIRL Rwy 8-26
HIRL Rwy 17-35
REIL Rwy 8 and 26

SE-4, 07 FEB 2013 to 07 MAR 2013

SE-4, 07 FEB 2013 to 07 MAR 2013