

WAAS CH 97303 W35A	APP CRS 352°	Rwy Idg THRE Apt Elev	8001 132 144
--	------------------------	-----------------------------	---

RNAV (GPS) RWY 35

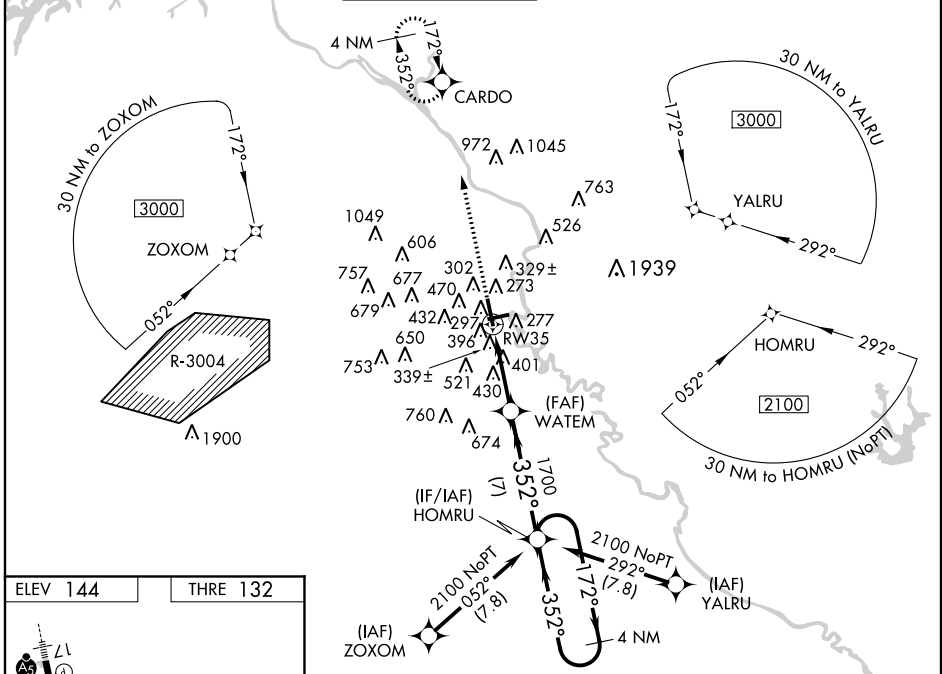
AUGUSTA RGNL AT BUSH FIELD (AGS)

ASR For uncompensated Baro-VNAV systems, LNAV/VNAV NA below -8°C (18°F) or above 43°C (109°F). DME/DME RNP-0.3 NA. When local altimeter setting not received, use Daniel Field altimeter setting and increase all DA 55 feet and all MDA 60 feet; increase LNAV/VNAV all Cats and Circling Cats C/D visibility ¼ mile, LNAV Cats C/D visibility ½ mile. Baro-VNAV and VDP NA when using Daniel Field altimeter setting. For inop MALSR, increase LNAV Cats C/D visibility to 1 ½ mile. For inop MALSR when using Daniel field altimeter setting, increase LNAV Cats C/D visibility to 1 ¾ . When VGSI inop, Circling Rwy 8 NA at night.

MALSR

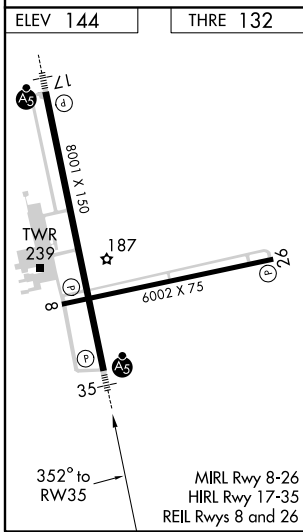
MISSED APPROACH:
Climb to 2400 direct CARDO and hold.

ATIS 132.75	AUGUSTA APP CON * 126.8 270.3	AUGUSTA TOWER * 118.7 (CTAF) 0 239.3	GND CON 121.9 348.6	CLNC DEL 121.9	UNICOM 122.95
-----------------------	---	--	-------------------------------	--------------------------	-------------------------



SE-4, 07 FEB 2013 to 07 MAR 2013

SE-4, 07 FEB 2013 to 07 MAR 2013



2400 CARDO VGSI and RNAV glidepath not coincident (VGSI Angle 3.00/TCH 71). **4 NM Holding Pattern**

***LNAV only.**

WATEM 1700

RW35 1.5 NM to RW35

1700 352° 172° 2100

GS 3.00° TCH 56

CATEGORY	A	B	C	D
LPV DA	332/24		200 (200-½)	
LNAV/VNAV DA	652/60		520 (600-1¼)	
LNAV MDA	680/24	548 (600-½)	680/60	548 (600-1¼)
CIRCLING	780-1	636 (700-1)	780-1¾ 636 (700-1¾)	780-2 636 (700-2)