

WAAS CH <b>77504</b> W <b>17A</b>	APP CRS <b>172°</b>	Rwy Idg THRE Apt Elev	<b>8001</b> <b>144</b> <b>144</b>
---	------------------------	-----------------------------	---

# RNAV (GPS) RWY 17

AUGUSTA RGNL AT BUSH FIELD (AGS)

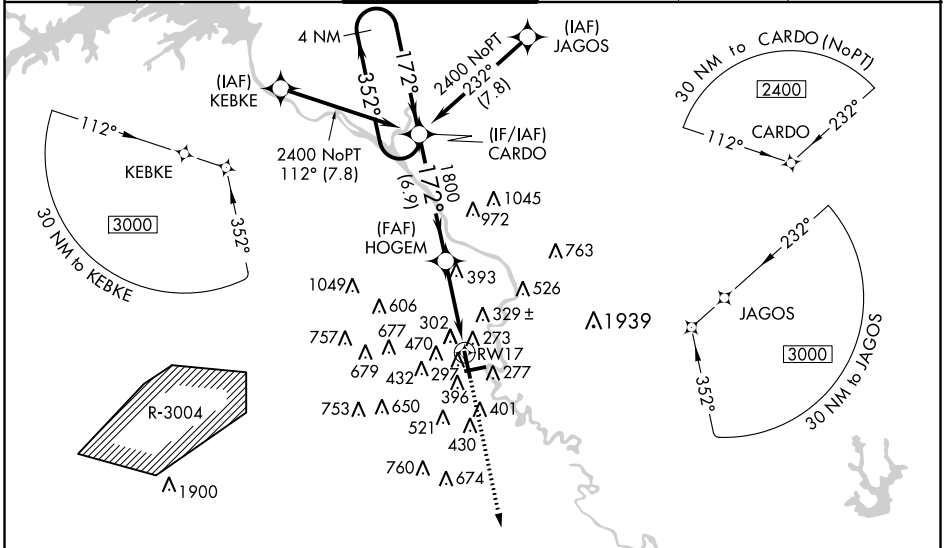
**▽** When VGSJ inop, Circling Rwy 8 NA at night. For uncompensated Baro-VNAV systems, LNAV/VNAV NA below -8°C (18°F) or above 42°C (107°F).  
**△** DME/DME RNP-0.3 NA. When local altimeter setting not received, use Daniel Field altimeter setting and increase all DA 55 feet and all MDA 60 feet; increase LNAV/VNAV all Cats visibility ¼ mile, LNAV and Circling Cats C/D visibility ¼ mile. Baro-VNAV and VDP NA when using Daniel Field altimeter setting.  
 ASR For inoperative MALSRS, increase LNAV Cats C/D visibility to 1½. For inoperative MALSRS when using Daniel Field altimeter setting, increase LNAV/VNAV all Cats visibility to 1½ mile and LNAV Cats C/D visibility to 1½ mile.

MALSRS



MISSED APPROACH:  
Climb to 2100 direct  
HOMRU and hold.

ATIS <b>132.75</b>	AUGUSTA APP CON ★ <b>126.8 270.3</b>	AUGUSTA TOWER ★ <b>118.7 (CTAF) 0 239.3</b>	GND CON <b>121.9 348.6</b>	CLNC DEL <b>121.9</b>	UNICOM <b>122.95</b>
-----------------------	---	--	-------------------------------	--------------------------	-------------------------

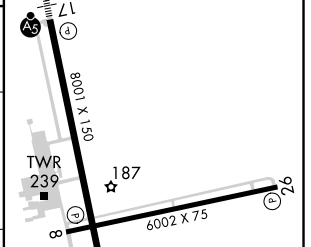
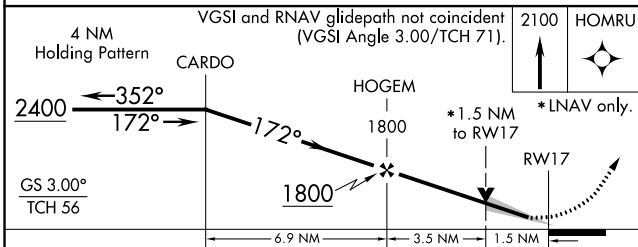


SE-4, 07 FEB 2013 to 07 MAR 2013

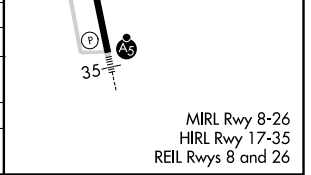
SE-4, 07 FEB 2013 to 07 MAR 2013



ELEV 144	THRE 144
----------	----------



CATEGORY	A	B	C	D
LPV DA		344/24	200 (200-½)	
LNAV/VNAV DA		518/40	374 (400-¾)	
LNAV MDA	700/24	556 (600-½)	700/60	556 (600-1¼)
CIRCLING	780-1	636 (700-1)	780-1¾	780-2 636 (700-2)



MIRL Rwy 8-26  
HIRL Rwy 17-35  
REIL Rwy 8 and 26