

# DOVER THREE DEPARTURE (RNAV)

SE-4, 07 FEB 2013 to 07 MAR 2013

AUGUSTA TOWER \*  
118.7 (CTAF) 239.3  
AUGUSTA DEP CON \*  
126.8 270.3  
CINC DEL  
118.2



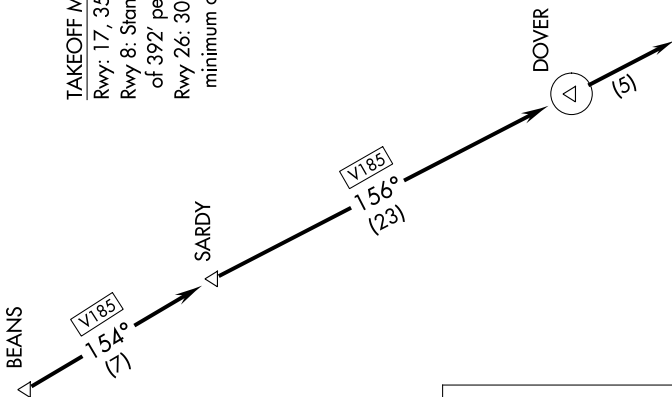
### TAKEOFF OBSTACLE NOTES:

- Rwy 8: Numerous trees beginning 560' from DER, 67' left of centerline, up to 80' AGL/209' MSL. Numerous trees beginning 821' from DER, 124' right of centerline, up to 80' AGL/209' MSL.
- Rwy 17: Numerous trees beginning 746' from DER, 616' left of centerline, up to 72' AGL/203' MSL. Numerous trees beginning 1700' from DER, 759' right of centerline, up to 82' AGL/216' MSL.
- Rwy 26: Numerous trees beginning 993' from DER, 295' left of centerline, up to 85' AGL/219' MSL. Light pole and numerous trees beginning 1016' from DER, 286' right of centerline, up to 71' AGL/205' MSL. Trees 4983' from DER, 1396' left of centerline, 100' AGL/649' MSL. Trees 1.4 NM from DER, 169' right of centerline, 112' AGL/361' MSL.

- NOTE: DME/DME/IRU or GPS Required.
- NOTE: Radar Required for non-GPS equipped aircraft.
- NOTE: RNAV 1.
- NOTE: For Turbojet aircraft during Masters golf tournament week.
- NOTE: Do not exceed 230K until advised by ATC.

### TAKEOFF MINIMUMS:

- Rwy 17, 35: Standard.
- Rwy 8: Standard with a minimum climb of 392' per NM to 2600.
- Rwy 26: 300-1 $\frac{3}{4}$  or Standard with a minimum climb of 308' per NM to 500.



NOTE: Chart not to scale.

### DEPARTURE ROUTE DESCRIPTION

TAKEOFF RWY 8, 17, 26, 35: Climb heading assigned by ATC. Expect vectors to BEANS, then on depicted route to DOVER, then on heading 156°, expect radar vectors, thence. . . .

. . . . Maintain altitude assigned by ATC. Expect clearance to filed altitude/flight level within 10 minutes after departure.

# DOVER THREE DEPARTURE (RNAV)

SE-4, 07 FEB 2013 to 07 MAR 2013