

(WHINZ.WHINZ2) 12320

WHINZ TWO ARRIVAL

HARTSFIELD-JACKSON ATLANTA INTL (ATL)
ATLANTA, GEORGIA

ST-26 (FAA)

ATLANTA APP CON
127.9 379.9
ATIS
119.65

MONTEBELLO
115.3 MOL
Chan 100
N37°54.03'-W79°06.41'
L-26, H-10-12

VOLUNTEER
116.4 VXV
Chan 111

SNOWBIRD
108.8 SOT
Chan 25
N35°47.41'
W83°03.14'
L-25 H-9-12

FOOTHILLS
113.4 ODF
Chan 81
N34°41.75'-W83°17.86'

SPARTANBURG
115.7 SPA
Chan 104
N35°02.02'-W81°55.62'
L-24-25, H-9-12

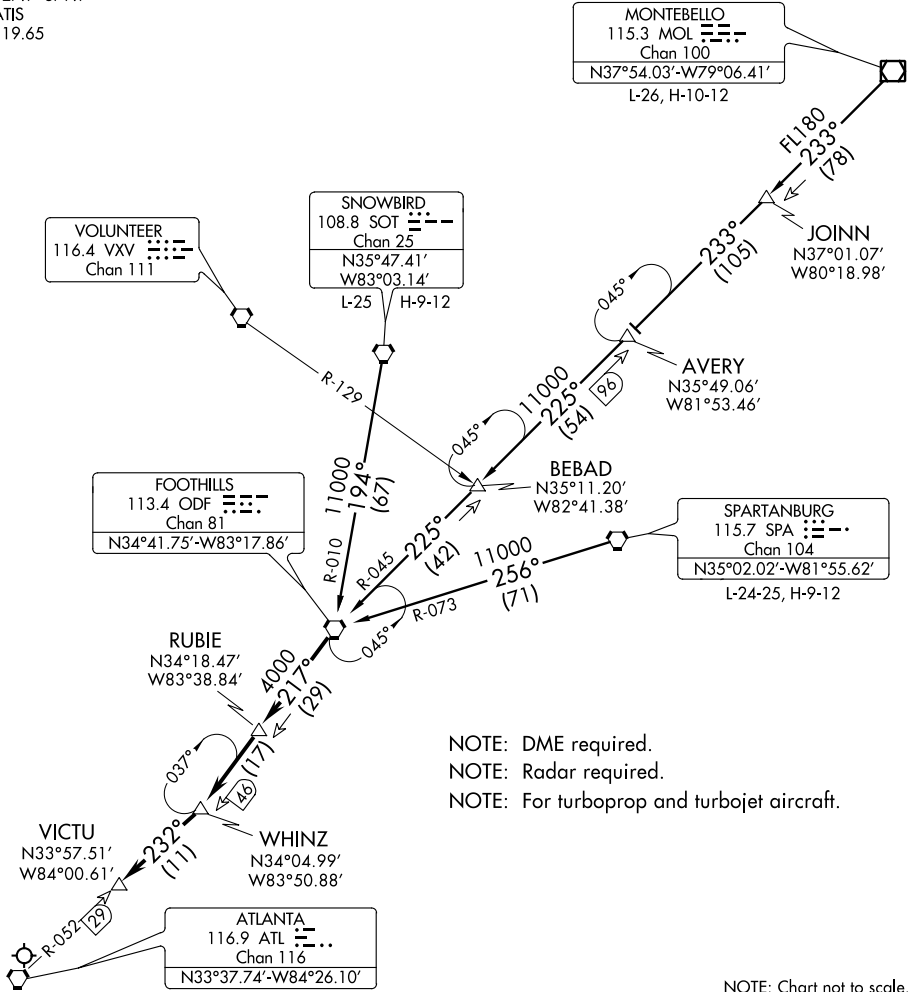
RUBIE
N34°18.47'
W83°38.84'

BEBAD
N35°11.20'
W82°41.38'

VICTU
N33°57.51'
W84°00.61'

WHINZ
N34°04.99'
W83°50.88'

ATLANTA
116.9 ATL
Chan 116
N33°37.74'-W84°26.10'



NOTE: DME required.
NOTE: Radar required.
NOTE: For turboprop and turbojet aircraft.

NOTE: Chart not to scale.

ARRIVAL ROUTE DESCRIPTION

MONTEBELLO TRANSITION (MOL.WHINZ2): From over MOL VOR/DME via MOL R-233 and ODF R-045 to ODF VORTAC. Thence. . .

SNOWBIRD TRANSITION (SOT.WHINZ2): From over SOT VORTAC via SOT R-194 and ODF R-010 to ODF VORTAC. Thence. . .

SPARTANBURG TRANSITION (SPA.WHINZ2): From over SPA VORTAC via SPA R-256 and ODF R-073 to ODF VORTAC. Thence. . .

. . . From over ODF VORTAC via ODF R-217 to RUBIE/ODF 29 DME and ODF R-217 to WHINZ/ODF 46 DME. Then via ATL R-052 to VICTU/ATL 29 DME. Expect radar vectors to final approach course after VICTU/ATL 29 DME.

WHINZ TWO ARRIVAL
(WHINZ.WHINZ2) 12320

ATLANTA, GEORGIA
HARTSFIELD-JACKSON ATLANTA INTL (ATL)

SE-4, 07 FEB 2013 to 07 MAR 2013

SE-4, 07 FEB 2013 to 07 MAR 2013