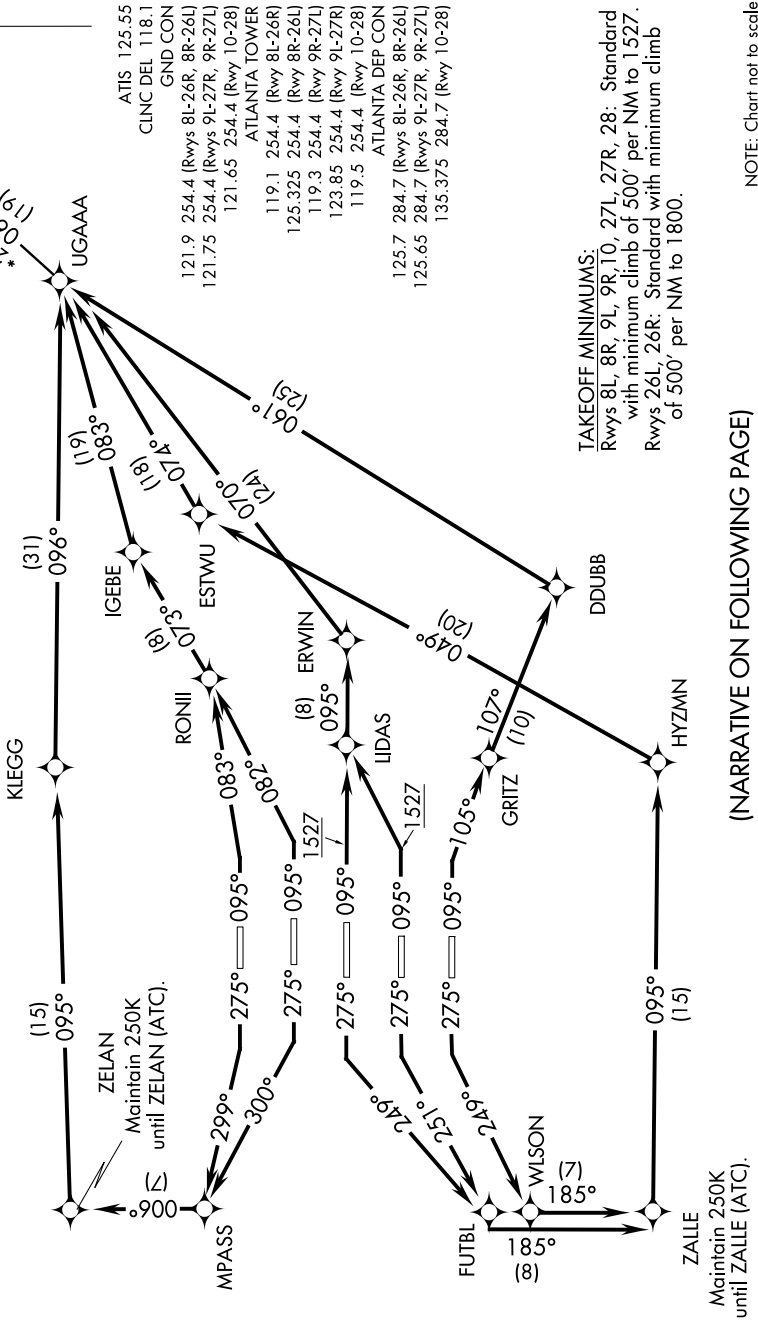


SE-4, 07 FEB 2013 to 07 MAR 2013

NOTE: Radar required for non-GPS equipped aircraft.  
 NOTE: Transponder code will be issued via PDC or Atlanta clearance delivery.  
 NOTE: Aircraft at Midfield Ramps will advise Ramp Towers of Departure SID prior to pushback. Upon receipt of ATC clearance (from ATL Clearance Delivery), readback only your call sign and transponder code, unless you have a question.  
 NOTE: Accelerate to 250K, if unable, advise ATC.

NOTE: If unable to accept climb rate, advise ATC on initial contact.  
 NOTE: Use departure frequency depicted unless otherwise assigned.  
 NOTE: For Turbojets only.  
 NOTE: DME/DME/IRU or GPS required.  
 NOTE: RNAV 1.



**TAKEOFF MINIMUMS:**  
 Rwys 8L, 8R, 9L, 9R, 10, 27L, 27R, 28: Standard with minimum climb of 500' per NM to 1527.  
 Rwys 26L, 26R: Standard with minimum climb of 500' per NM to 1800.

(NARRATIVE ON FOLLOWING PAGE)

NOTE: Chart not to scale

SE-4, 07 FEB 2013 to 07 MAR 2013