

WAAS CH <b>97400</b> <b>W09B</b>	APP CRS <b>095°</b>	Rwy Idg TDZE Apt Elev	<b>9000</b> <b>1026</b> <b>1026</b>
--	------------------------	-----------------------------	---

# RNAV (GPS) Y RWY 9R

ATLANTA/HARTSFIELD - JACKSON ATLANTA INTL (ATL)

▼ For uncompensated Baro-VNAV systems, procedure NA below -17°C (2°F) or above 54°C (130°F). DME/DME RNP-0.3 NA. Simultaneous approach authorized with ILS or LOC Rwy 8L, ILS Rwy 8L (Cat II), ILS Rwy 8L (Cat III), ILS or LOC Rwy 8R, ILS Rwy 8R (Cat II), ILS Rwy 8R (Cat III), RNAV (GPS) Y Rwy 10, ILS or LOC Rwy 10, ILS Rwy 10 (SA Cat I), ILS Rwy 10 (Cat II), ILS Rwy 10 (Cat III). Use of FD or AP providing RNAV track guidance required during simultaneous operations. LNAV procedure NA during simultaneous operations.

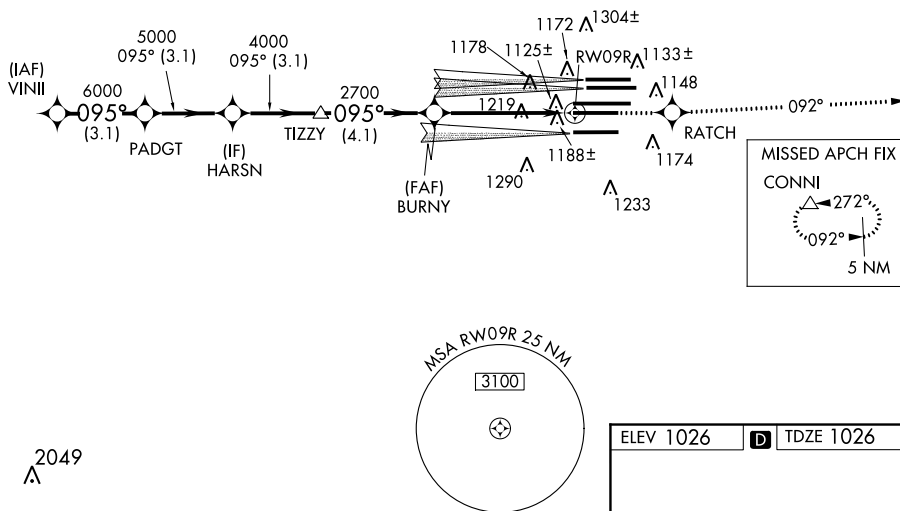


MISSED APPROACH: Climb to 4000 direct RATCH and on track 092° to CONNI and hold.

ATIS ARR <b>119.65</b>	ATLANTA APP CON <b>127.9 379.9</b>	ATLANTA TOWER					ALL RWYS	GND CON	ALL RWYS	
DEP <b>125.55</b>		8L-26R	8R-26L	9L-27R	9R-27L	10-28	<b>121.9</b>	<b>121.75</b>	<b>121.65</b>	<b>254.4</b>

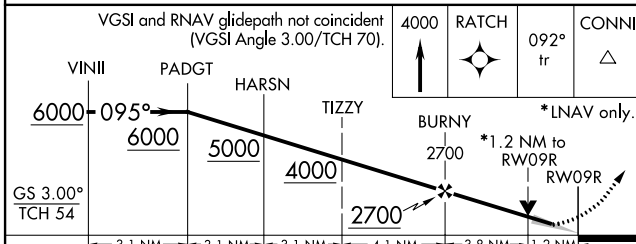
## RADAR REQUIRED

2048 ▲	2048	CLNC DEL <b>118.1</b>
1637 ▲	2049	
	2049±	



SE-4, 07 FEB 2013 to 07 MAR 2013

SE-4, 07 FEB 2013 to 07 MAR 2013



CATEGORY	A	B	C	D
LPV DA		1226/24	200 (200-½)	
LNAV/VNAV DA		1475/50	449 (500-1)	
LNAV MDA	1480/24	454 (500-½)	1480/40 454 (500-¾)	1480/50 454 (500-1)

ELEV 1026 TDZE 1026

HIRL all runways  
TDZ/CL Rwy 8L, 9R, 10, 26R,  
27L and 28