

WAAS CH 62800 W09A	APP CRS 095°	Rwy Idg 11730 TDZE 1019 Apt Elev 1026
--	------------------------	--

RNAV (GPS) Y RWY 9L

ATLANTA/ HARTSFIELD - JACKSON ATLANTA INTL (ATL)

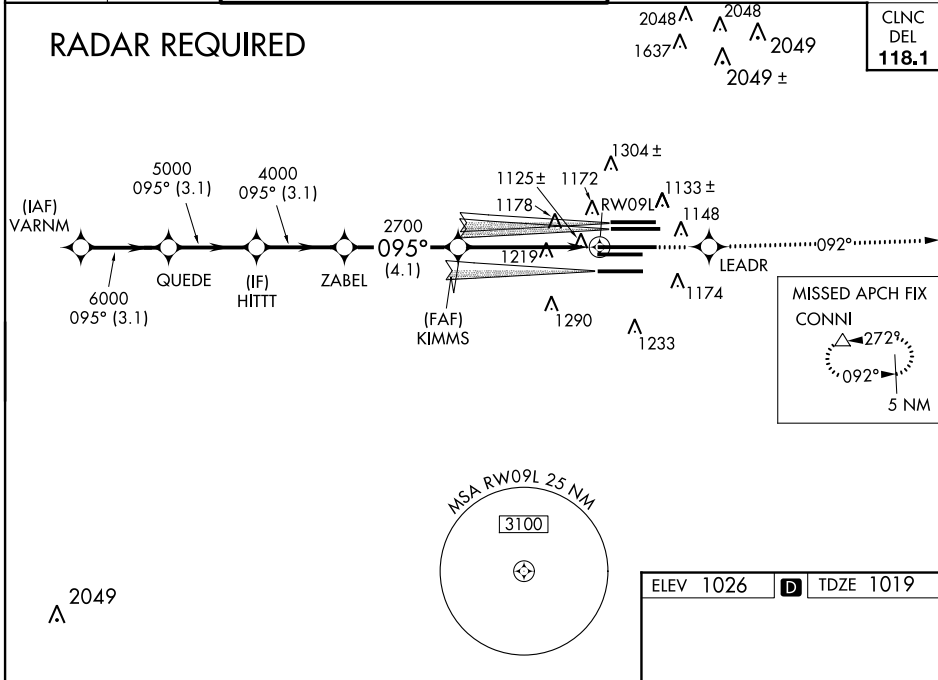
▼ For uncompensated Baro-VNAV systems, LNAV/VNAV NA below -17°C (2°F) or above 54°C (130°F). DME/DME RNP-0.3 NA. Simultaneous approach authorized with ILS or LOC Rwy 8L, ILS Rwy 8L (Cat II), ILS Rwy 8L (Cat III), ILS or LOC Rwy 8R, ILS Rwy 8R (Cat II), ILS Rwy 8R (Cat III), ILS or LOC Rwy 10, ILS Rwy 10 (SA Cat I), ILS Rwy 10 (Cat II), ILS Rwy 10 (Cat III), RNAV (GPS) Y Rwy 10. FD or AP providing RNAV track guidance required during simultaneous operations. LNAV procedure NA during simultaneous operations.



MISSED APPROACH: Climb to 4000 direct LEADR and on track 092° to CONNI and hold.

ATIS ARR 119.65 DEP 125.55	ATLANTA APP CON 127.9 379.9	ATLANTA TOWER 8L-26R 8R-26L 9L-27R 9R-27L 10-28 RWYS 119.1 125.325 123.85 119.3 119.5 254.4					ALL RWYS 121.9	GND CON 8L-26R,8R-26L) (9L-27R,9R-27L) 10-28 RWYS 121.75 121.65 254.4	ALL RWYS
--	--	--	--	--	--	--	-----------------------------	--	-------------

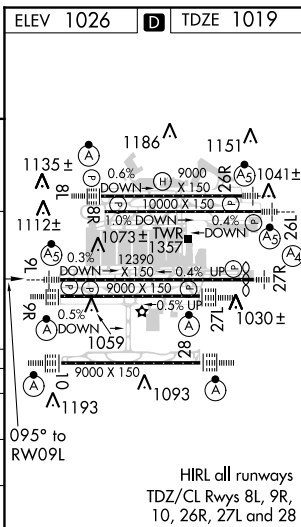
RADAR REQUIRED



SE-4, 07 FEB 2013 to 07 MAR 2013

SE-4, 07 FEB 2013 to 07 MAR 2013

VGSi and RNAV glidepath not coincident (VGSi Angle 3.00/TCH 71).		4000	LEADR	tr 092°	CONNI
VARNM	QUEDE	HITTT	ZABEL	KIMMS	RWY 09L
7000	6000	5000	4000	2700	
* LNNAV only					
* 1.2 NM to RWY 09L					
GS 3.00° TCH 56					
3.1 NM 3.1 NM 3.1 NM 4.1 NM 3.8 NM 1.2 NM					
CATEGORY	A	B	C	D	
LPV DA		1219/24	200 (200-½)		
LNNAV/VNAV DA		1477/50	458 (500-1)		
LNNAV MDA	1480/24	461 (500-½)	1480/40 461 (500-¾)	1480/50 461 (500-1)	



HIRL all runways
TDZ/CL Rwys 8L, 9R,
10, 26R, 27L and 28