

WAAS CH <b>48800</b> <b>W08A</b>	APP CRS <b>095°</b>	Rwy Idg <b>10000</b> TDZE <b>1024</b> Apt Elev <b>1026</b>
--	------------------------	--

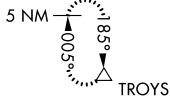
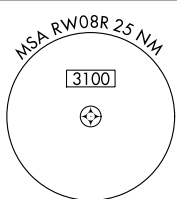
# RNAV (GPS) Y RWY 8R

ATLANTA/ HARTSFIELD - JACKSON ATLANTA INTL (ATL)

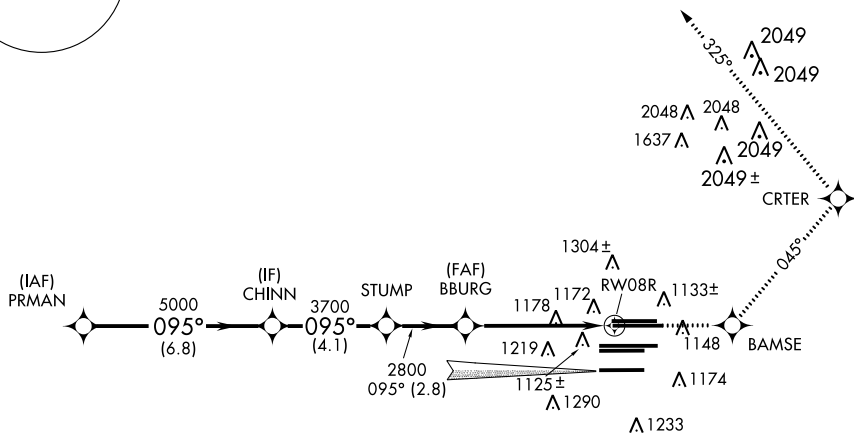
▼ For uncompensated Baro-VNAV systems, LNAV/VNAV NA below -17°C (2°F) or above 54°C (130°F). Simultaneous approach authorized with Rwy ILS or LOC Rwy 10, ILS Rwy 10 (SA Cat I), ILS Rwy 10 (Cat II), ILS Rwy 10 (Cat III), RNAV (GPS) Y Rwy 10. DME/DME RNP-0.3 NA. Visibility reduction by helicopters NA. Use of FD or AP providing RNAV track guidance required during simultaneous operations. LNAV procedure NA during simultaneous operations.

MISSED APPROACH: Climb to 3500 direct BAMSE and on track 045° to CRTER and on track 325° to TROYS and hold.

ATIS ARR <b>119.65</b> DEP <b>125.55</b>	ATLANTA APP CON <b>127.9 379.9</b>	ATLANTA TOWER 8L-26R <b>119.1</b> 8R-26L <b>125.325</b> 9L-27R <b>123.85</b> 9R-27L <b>119.3</b> 10-28 <b>119.5</b> RWYS <b>254.4</b>	ALL RWYS	GND CON 8L-26R,8R-26L <b>121.9</b> 9L-27R,9R-27L <b>121.75</b> 10-28 <b>121.65</b> RWYS <b>254.4</b>	ALL RWYS
--	--	--	-------------	---	-------------

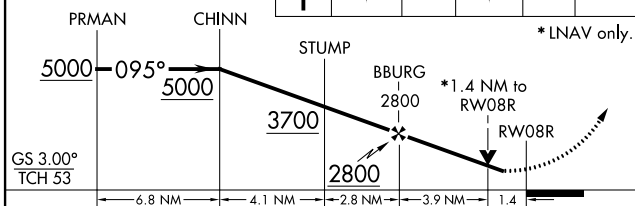
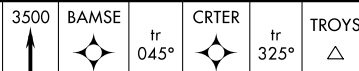


CLNC DEL  
**118.1**

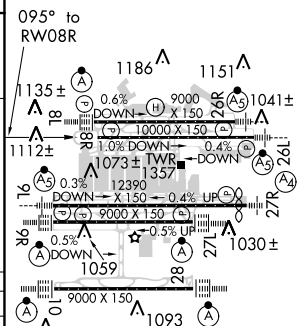


## RADAR REQUIRED

VGSI and RNAV glidepath not coincident (VGSI Angle 3.00/TCH 67).



ELEV 1026	TDZE 1024
-----------	-----------



CATEGORY	A	B	C	D
LPV DA		1337/50	313 (400-1)	
LNAV/VNAV DA		1526-1¾	502 (500-1¾)	
LNAV MDA	1540/50	516 (600-1)	1540-1½ 516 (600-1½)	1540-1¾ 516 (600-1¾)

HIRL all runways  
TDZ/CL Rwy 8L, 9R, 10, 26R, 27L and 28