

WAAS CH 99300 W08B	APP CRS 095°	Rwy Idg TDZE Apt Elev	8800 1015 1026
--	------------------------	-----------------------------	---

RNAV (GPS) Y RWY 8L

ATLANTA/ HARTSFIELD - JACKSON ATLANTA INTL (ATL)

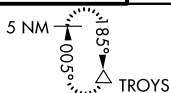
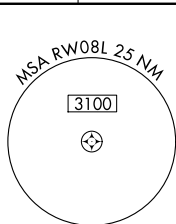
▼ For uncompensated Baro-VNAV Systems, LNAV/VNAV NA below -17°C (2°F) or above 54°C (130°F). Simultaneous approach authorized with RNAV (GPS) Y Rwy 10, ILS or LOC Rwy 10, ILS Rwy 10 (SA Cat I), ILS Rwy 10 (Cat II), ILS Rwy 10 (Cat III). LNAV procedure NA during simultaneous operations. Use of FD or AP providing RNAV track guidance required during simultaneous operations. DME/ DME RNP-0.3 NA.

ALSF-2

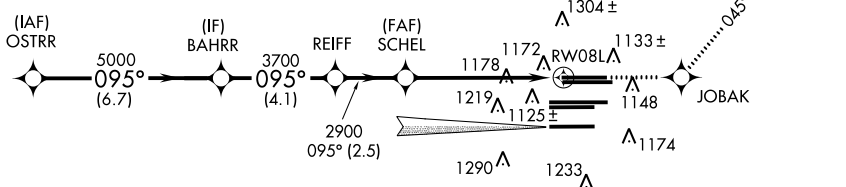


MISSED APPROACH: Climb to 3500 direct JOBAK and on track 045° to VRSTY and on track 325° to TROYS and hold.

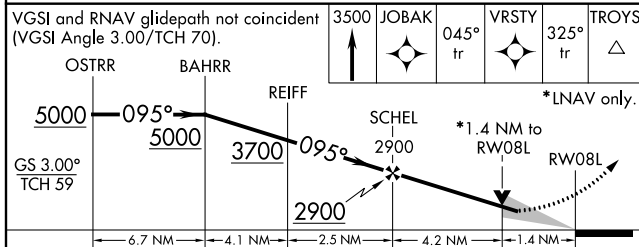
ATIS ARR 119.65 DEP 125.55	ATLANTA APP CON 127.9 379.9	ATLANTA TOWER 8L-26R 8R-26L 9L-27R 9R-27L 10-28 RWYS 119.1 125.325 123.85 119.3 119.5 254.4				ALL RWYS 121.9	GND CON 10-28 RWYS 121.75 121.65 254.4
--	--	--	--	--	--	-----------------------------	---



CLNC
DEL
118.1



RADAR REQUIRED



ELEV 1026 TDZE 1015

HIRL all runways
TDZ/CL Rwy's 8L, 9R,
10, 26R, 27L and 28

CATEGORY	A	B	C	D
LPV DA		1360/40	345 (400-¾)	
LNAV/VNAV DA		1475/50	460 (500-1)	
LNAV MDA	1540/24	525 (600-½)	1540/50 525 (600-1)	1540/60 525 (600-¼)