

WAAS CH 61299 W28A	APP CRS 275°	Rwy Idg THRE 998 Apt Elev 1026	9000
----------------------------------------	------------------------	----------------------------------------------------	-------------

RNAV (GPS) Y RWY 28

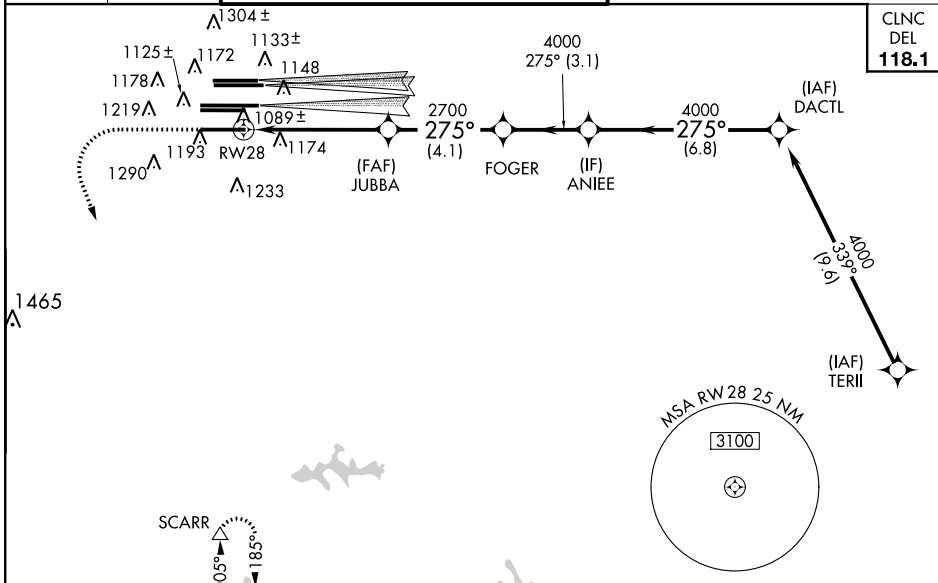
ATLANTA/ HARTSFIELD-JACKSON ATLANTA INTL (ATL)

⚠ For uncompensated Baro-VNAV systems, LNAV/VNAV NA below -17°C (2°F) or above 54°C (130°F). For inop ALSF-2, increase LNAV/VNAV all Cats visibility to ¾ mile. DME/DME RNP-0.3 NA. Simultaneous approach authorized with Rwy 26L or Rwy 26R or Rwy 27R. Use of FD or AP providing RNAV track guidance required during simultaneous operations. LNAV procedure NA during simultaneous operations.

ALSF-2
ⓐ

MISSED APPROACH: Climb to 1600 then climbing left turn to 3000 direct SCARR and hold.

ATIS ARR 119.65	ATLANTA APP CON 127.9 379.9	ATLANTA TOWER 8L-26R 8R-26L 9L-27R 9R-27L 10-28 RWYS 119.1 125.325 123.85 119.3 119.5 254.4				ALL RWYS 121.9	GND CON 121.75	ALL RWYS 121.65 254.4
DEP 125.55								

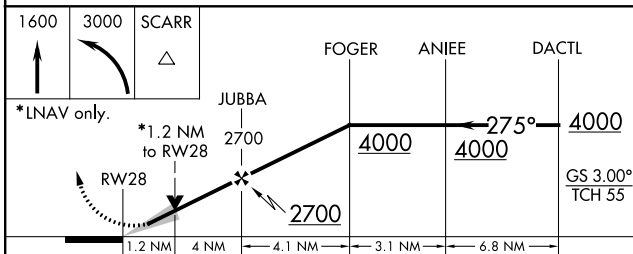


CLNC
DEL
118.1

SE-4, 07 FEB 2013 to 07 MAR 2013

SE-4, 07 FEB 2013 to 07 MAR 2013

RADAR REQUIRED



CATEGORY	A	B	C	D
LPV DA		1198/24	200 (200-½)	
LNAV/VNAV DA		1250/24	252 (300-½)	
LNAV MDA	1440/24	442 (500-½)	1440/45	442 (500-¾)

ELEV 1026 **D** THRE 998

HIRL all runways
TDZ/CL Rwy's 8L, 9R, 10, 26R,
27L and 28