

WAAS CH <b>70400</b> <b>W27B</b>	APP CRS <b>275°</b>	Rwy Idg <b>11690</b> TDZE <b>985</b> Apt Elev <b>1026</b>
----------------------------------------	------------------------	-----------------------------------------------------------------

# RNAV (GPS) Y RWY 27R

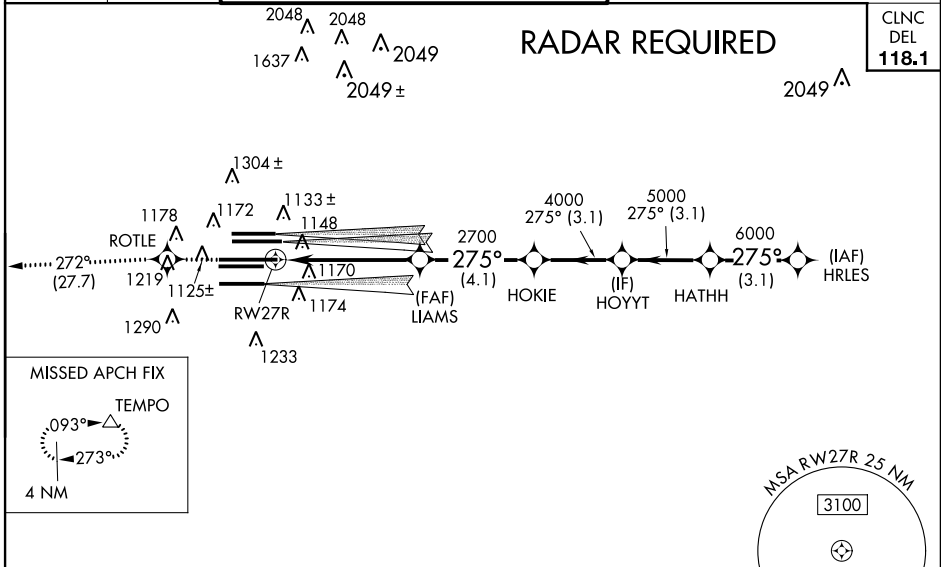
ATLANTA/HARTSFIELD-JACKSON ATLANTA INTL (ATL)

▼ Inoperative table does not apply to LPV, LNAV/VNAV, and LNAV Cats C and D. For uncompensated Baro-VNAV systems, LNAV/VNAV NA below -17°C (2°F) or above 54°C (130°F). Simultaneous approach authorized with ILS or LOC Rwy 26L, ILS or LOC Rwy 26R, ILS or LOC Rwy 26R (SA Cat I), ILS Rwy 26R (SA Cat II), ILS or LOC Rwy 28, ILS Rwy 28 (Cat II), RNAV (GPS) Y Rwy 28. DME/DME RNP-0.3 NA. LNAV procedure NA during simultaneous operations. Use of FD or AP providing RNAV track guidance required during simultaneous operations.

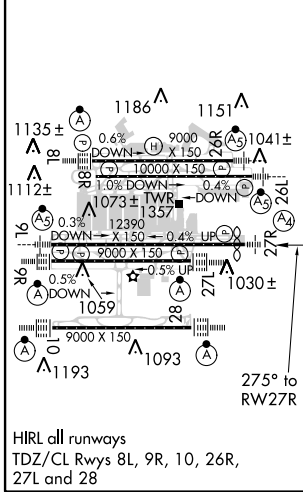


MALS MISSED APPROACH: Climb to 4000 direct ROTLE and on 272° track to TEMPO and hold.

ATIS ARR <b>119.65</b> DEP <b>125.55</b>	ATLANTA APP CON <b>127.9 379.9</b>	ATLANTA TOWER 8L-26R <b>119.1</b> 125.325 8R-26L <b>123.85</b> 9L-27R <b>119.3</b> 119.5 9R-27L <b>254.4</b>	ALL RWYS 10-28 <b>121.9</b> 121.75	GND CON 10-28 <b>121.65</b>	ALL RWYS 10-28 <b>254.4</b>
------------------------------------------------	------------------------------------------	--------------------------------------------------------------------------------------------------------------------------	------------------------------------------	--------------------------------	--------------------------------



ELEV 1026	<b>D</b>	TDZE 985
-----------	----------	----------



4000	ROTTLE	tr 272°	TEMPO	VGSi and RNAV glidepath not coincident (VGSi Angle 3.00/TCH 72).			
*LNAV only.				HOYYT	HATHH	HRLES	
*1.6 NM to RWY 27R				HOKIE	LIAMS	2700	2700
RWY 27R				4000	5000	6000	6000
				1.6 NM	3.6 NM	4.1 NM	3.1 NM
CATEGORY				A	B	C	D
LPV DA				1185/40 200 (200-¾)			
LNAV/VNAV DA				1464-1¾ 479 (500-1¾)			
LNAV MDA				1560/40 575 (600-¾)		1560-1½ 575 (600-1½)	
						1560-1¾ 575 (600-1¾)	

SE-4, 07 FEB 2013 to 07 MAR 2013

SE-4, 07 FEB 2013 to 07 MAR 2013