

WAAS CH <b>65700</b> <b>W27A</b>	APP CRS <b>275°</b>	Rwy Idg TDZE Apt Elev	<b>8865</b> <b>999</b> <b>1026</b>
--	------------------------	-----------------------------	--

# RNAV (GPS) Y RWY 27L

ATLANTA/ HARTSFIELD-JACKSON ATLANTA INTL (ATL)

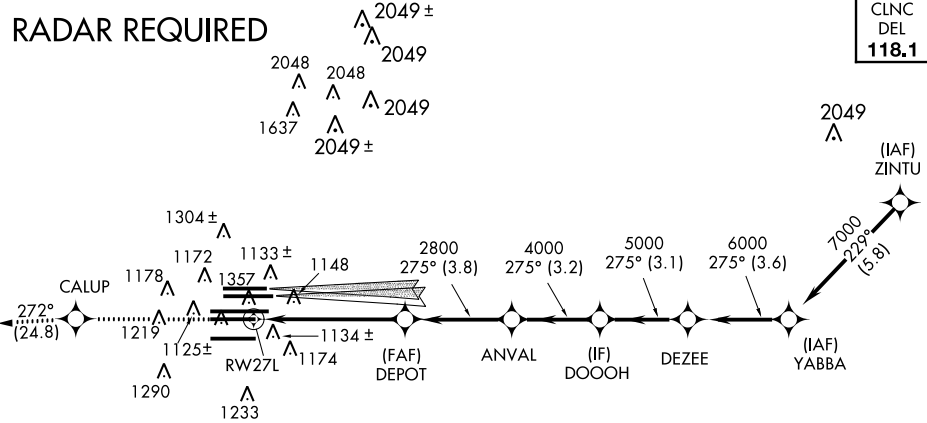
▼ For uncompensated Baro-VNAV systems, LNAV/VNAV below -17°C (2°F) or above 54°C (130°F). For inoperative ALSF-2, increase LNAV/VNAV visibility to 1½ all Cats. DME/DME RNP-0.3 NA. Simultaneous approach authorized with ILS or LOC Rwy 26L, ILS or LOC Rwy 26R, ILS Rwy 26R (Cat II). Use of FD or AP providing RNAV track guidance required during simultaneous operations. LNAV procedure NA during simultaneous operations.



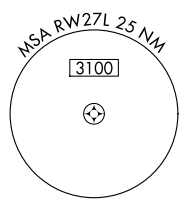
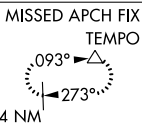
MISSED APPROACH: Climb to 4000 direct CALUP and on track 272° to TEMPO and hold.

ATIS ARR <b>119.65</b>	ATLANTA APP CON DEP <b>127.9 379.9</b>	ATLANTA TOWER 8L-26R 8R-26L 9L-27R 9R-27L 10-28 RWYS DEP <b>119.1 125.325 123.85 119.3 119.5 254.4</b>	ALL (8L-26R,8R-26L) (9L-27R,9R-27L) 10-28 RWYS DEP <b>121.9 121.75 121.65 254.4</b>
---------------------------	--	--	---

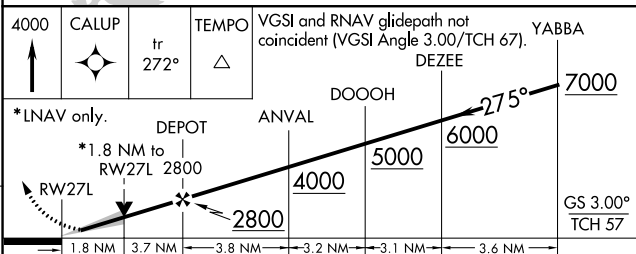
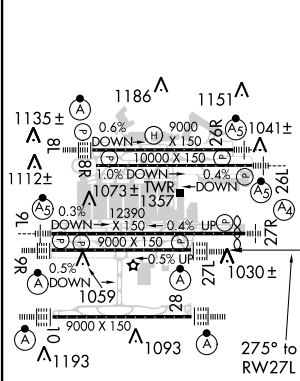
## RADAR REQUIRED



CLNC DEL  
**118.1**



ELEV 1026	<b>D</b>	TDZE 999
-----------	----------	----------



CATEGORY	A	B	C	D
LPV DA		1199/24	200 (200-½)	
LNAV/VNAV DA		1489/60	490 (500-1¼)	
LNAV MDA	1620/24	621 (600-½)	1620/60 621 (600-1¼)	1620-1¼ 621 (600-1¼)

HIRL all runways  
TDZ/CL Rwy 8L, 9R, 10, 26R,  
27L and 28

SE-4, 07 FEB 2013 to 07 MAR 2013

SE-4, 07 FEB 2013 to 07 MAR 2013