

WAAS CH 61000 W26B	APP CRS 275°	Rwy Idg TDZE Apt Elev	8800 990 1026
--	------------------------	-----------------------------	--

RNAV (GPS) Y RWY 26R

ATLANTA/ HARTSFIELD-JACKSON ATLANTA INTL (ATL)

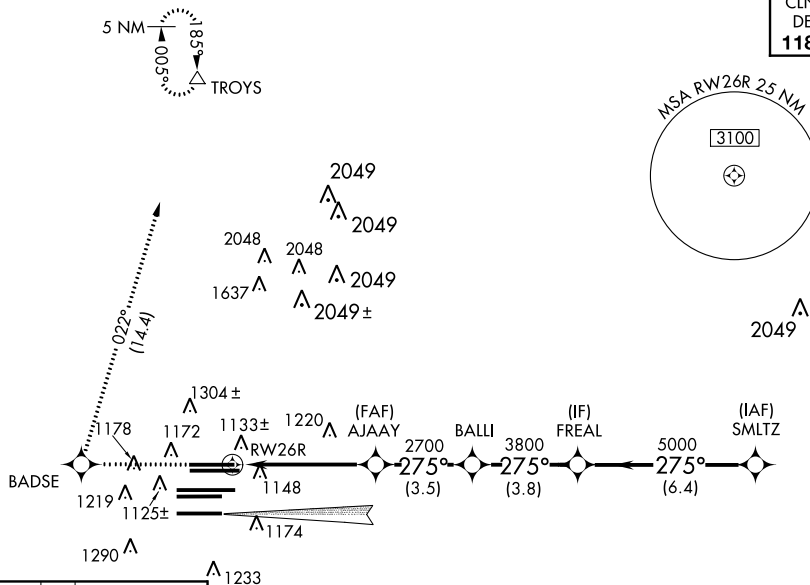
▼ For uncompensated Baro-VNAV systems, LNAV/VNAV NA below -17°C (2°F) or above 54°C (130° F). DME/DME RNP-0.3 NA. Simultaneous approach authorized with ILS or LOC Rwy 28, ILS Rwy 28 (Cat II), RNAV (GPS) Y Rwy 28. Use of FD or AP providing RNAV track guidance required during simultaneous operations. LNAV procedure NA during simultaneous operations. For inoperative MALSR, increase LPV all Cts visibility to RVR 6000.



MISSED APPROACH: Climb to 3500 direct BADSE and right turn on track 022° to TROYS and hold.

ATIS ARR 119.65	ATLANTA APP CON DEP 127.9 379.9	ATLANTA TOWER 8L-26R 8R-26L 9L-27R 9R-27L 10-28 RWYS 119.1 125.325 123.85 119.3 119.5 254.4					ALL RWYS 121.9	GND CON (8L-26R, 8R-26L) (9L-27R, 9R-27L) 10-28 121.75 121.65 254.4	ALL RWYS
---------------------------	--	--	--	--	--	--	-----------------------------	--	-------------

CLNC
DEL
118.1

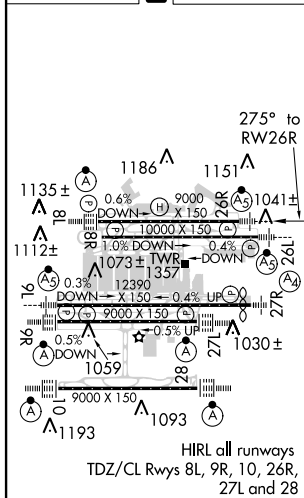


SE-4, 07 FEB 2013 to 07 MAR 2013

SE-4, 07 FEB 2013 to 07 MAR 2013

ELEV 1026	D	TDZE 990
-----------	----------	----------

RADAR REQUIRED



3500	BADSE	TROYS	VGSI and RNAV glidepath not coincident (VGSI Angle 3.00/TCH 69).			
*LNAV only.		*1.6 NM to RWY 26R		FREAL	SMLTZ	
RWY 26R		AJAAY 2700	BALLI 3800	5000	5000	
1.6		3.5 NM		3.5 NM	3.8 NM	
3.5 NM		3.5 NM		6.4 NM		
CATEGORY	A	B	C	D		
LPV DA	1361/40		371 (400-¾)			
LNAV/VNAV DA	1435/50		445 (500-1)			
LNAV MDA	1560/24		570 (600-½)		1560/50 570 (600-1)	