

WAAS CH 56300 W26A	APP CRS 275°	Rwy Idg TDZE 995 Apt Elev 1026	10000
--	------------------------	--	--------------

RNAV (GPS) Y RWY 26L

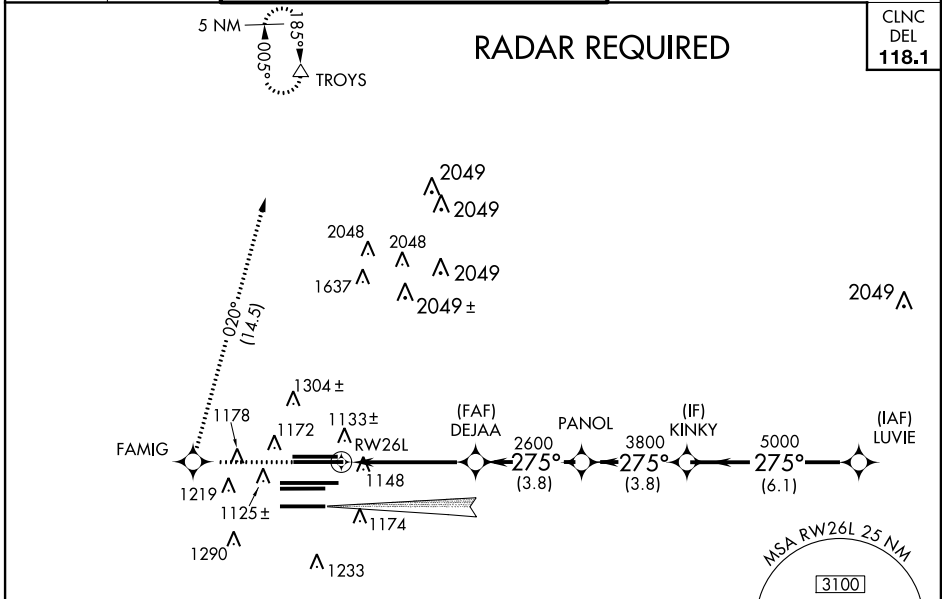
ATLANTA/HARTSFIELD-JACKSON ATLANTA INTL (ATL)

▼ For uncompensated Baro-VNAV systems, LNAV/VNAV NA below -17°C (2°F) or above 54°C (130°F). Simultaneous approach authorized with RNAV (GPS) Y Rwy 28, ILS or LOC Rwy 28, ILS Rwy 28 (Cat II). DME/DME RNP-0.3 NA. Use of FD or AP providing RNAV track guidance required during simultaneous operations. LNAV procedure NA during simultaneous operations.

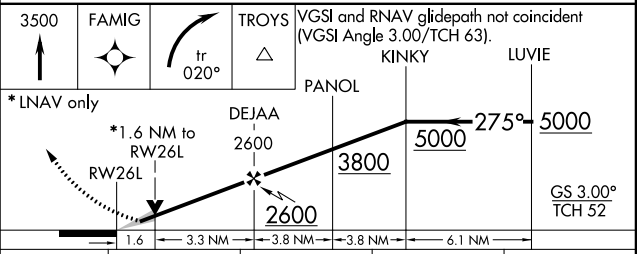
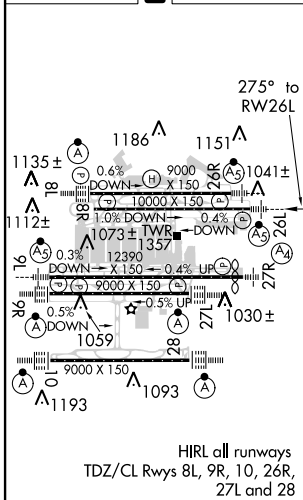
MALSR


MISSED APPROACH: Climb to 3500 direct FAMIG and right turn on track 020° to TROYS and hold.

ATIS ARR 119.65	ATLANTA APP CON	ATLANTA TOWER				ALL	GND CON	ALL
DEP 125.55	127.9 379.9	8L-26R	8R-26L	9L-27R	9R-27L	10-28	RWYS	10-28
		119.1	125.325	123.85	119.3	119.5	254.4	121.9
				121.9			121.75	121.65
						254.4		



ELEV 1026	D	TDZE 995
-----------	----------	----------



CATEGORY	A	B	C	D
LPV DA	1331/40		336 (400-¾)	
LNAV/VNAV DA	1459/50		464 (500-1)	
LNAV MDA	1540/24	545 (600-½)	1540/50 545 (600-1)	1540/60 545 (600-1¼)

RNAV (GPS) Y RWY 26L

SE-4, 07 FEB 2013 to 07 MAR 2013

SE-4, 07 FEB 2013 to 07 MAR 2013