


WAAS CH 40399 W10A	APP CRS 095°	Rwy Idg THRE 1000 Apt Elev 1026	9000
--	------------------------	---	-------------

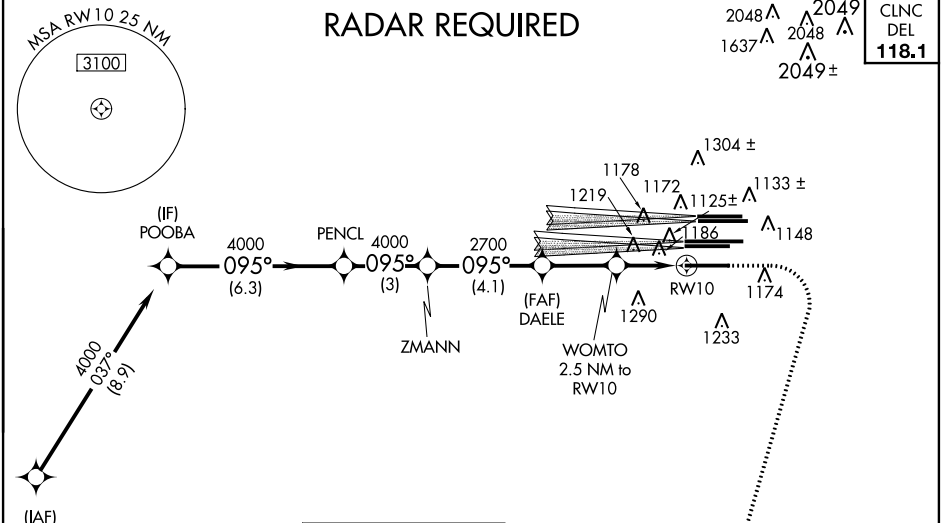
RNAV (GPS) Y RWY 10

ATLANTA/HARTSFIELD-JACKSON ATLANTA INTL (ATL)

▼ For uncompensated Baro-VNAV systems, LNAV/VNAV NA below -17°C (2°F) or above 54°C (130°F). DME/DME RNP-0.3 NA. For inoperative ALSF-2, increase LNAV/VNAV all Cats and LNAV Cat C and D visibility $\frac{2}{3}$ mile. Simultaneous approach authorized with ILS or LOC Rwy 8L, ILS Rwy 8L (Cat II), ILS Rwy 8L (Cat III), ILS or LOC Rwy 8R, ILS Rwy 8R (Cat II), ILS Rwy 8R (Cat III), Rwy 9L, Rwy 9R. Use of FD or AP providing RNAV track guidance required during simultaneous operations. LNAV procedure RNAV during simultaneous operations.

ALSF-2

 MISSED APPROACH: Climb to 1600 then climbing right turn to 3000 direct SCARR and hold.

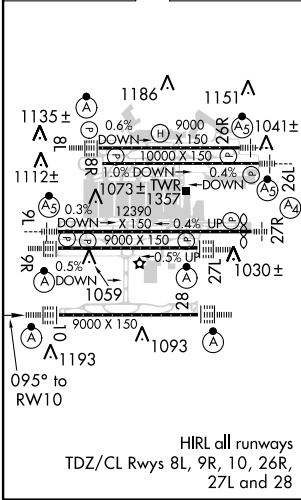
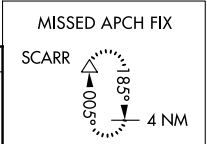
ATIS ARR 119.65	ATLANTA APP CON DEP 127.9 379.9	ATLANTA TOWER 8L-26R 119.1 8R-26L 123.85 9L-27R 119.3 9R-27L 119.5 10-28 RWYS 254.4	ALL RWYS 121.9	GND CON (8L-26R, 8R-26L) 121.9 (9L-27R, 9R-27L) 121.75 10-28 RWYS 121.65 254.4	ALL RWYS 254.4
---------------------------	--	---	-----------------------------	--	-----------------------------



SE-4, 07 FEB 2013 to 07 MAR 2013

SE-4, 07 FEB 2013 to 07 MAR 2013

ELEV 1026 **D** THRE 1000



POOBA	PENCL	ZMANN	DAELE	SCARR	
4000	4000	4000	2700	1600	3000
095°			*LNAV only.		
4000			WOMTO 2.5 NM to RWY 10		
4000			*1.3 NM to RWY 10		
4000			RWY 10		
4000			1840		
4000			1.2 NM		
4000			1.3 NM		
GS 3.00°	TCH 58				
6.3 NM			3 NM		
4.1 NM			2.7 NM		
1.2 NM			1.3 NM		
CATEGORY	A	B	C	D	
LPV DA		1200/24	200 (200-½)		
LNAV/VNAV DA		1540-1 ¾	540 (600-1¾)		
LNAV MDA	1480/24	480 (500-½)	1480/50	480 (500-1)	