

APP CRS	Rwy Idg	<b>9000</b>
<b>095°</b>	TDZE	<b>1026</b>
	Apt Elev	<b>1026</b>

# RNAV (RNP) Z RWY 9R

ATLANTA/ HARTSFIELD - JACKSON ATLANTA INTL (ATL)

▼ For uncompensated Baro-VNAV systems, procedure NA below -9°C (16°F) or above 54°C (130°F). For inoperative ALSF-2, increase RNP 0.11 all Cats visibility to RVR 6000, RNP 0.15 and RNP 0.30 all Cats visibility to 1 1/2 . GPS required. Simultaneous approach authorized with ILS or LOC Rwy 8L, ILS Rwy 8L (Cat II), ILS Rwy 8L (Cat III), ILS or LOC Rwy 8R, ILS Rwy 8R (Cat II), ILS Rwy 8R (Cat III), RNAV (GPS) Y Rwy 10, ILS or LOC Rwy 10, ILS Rwy 10 (SA Cat I), ILS Rwy 10 (Cat II), ILS Rwy 10 (Cat III). Use of FD or AP providing RNAV track guidance required during simultaneous operations.

ALSF-2

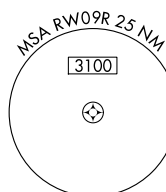
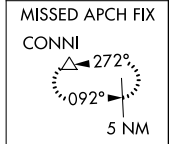
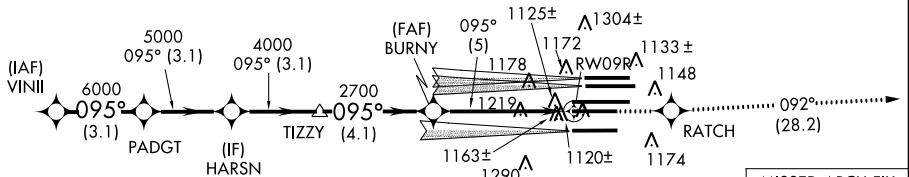


MISSED APPROACH:  
Climb to 4000 direct RATCH and on track 092° to CONNI and hold.

ATIS	ATLANTA	ATLANTA TOWER					ALL	GND CON	ALL		
ARR <b>119.65</b>	APP CON	8L-26R	8R-26L	9L-27R	9R-27L	10-28	RWYS	(8L-26R,8R-26L)	(9L-27R,9R-27L)	10-28	RWYS
DEP <b>125.55</b>	<b>127.9 379.9</b>	<b>119.1</b>	<b>125.325</b>	<b>123.85</b>	<b>119.3</b>	<b>119.5</b>	<b>254.4</b>	<b>121.9</b>	<b>121.75</b>	<b>121.65</b>	<b>254.4</b>

## RADAR REQUIRED

2048 $\Delta$	$\Delta$ 2048	CLNC DEL <b>118.1</b>
1637 $\Delta$	$\Delta$ 2049	
	$\Delta$ 2049±	

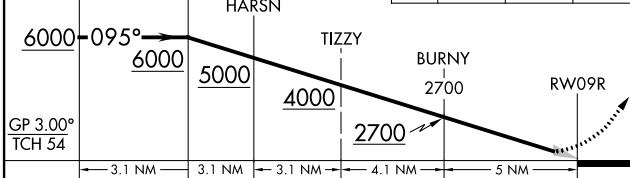


SE-4, 07 FEB 2013 to 07 MAR 2013

SE-4, 07 FEB 2013 to 07 MAR 2013

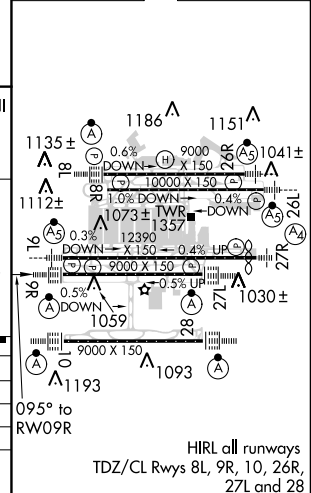
VGSI and RNAV glidepath not coincident (VGSI Angle 3.00/TCH 70).

4000	RATCH	tr 092°	CONNI
------	-------	---------	-------



CATEGORY	A	B	C	D
RNP 0.11 DA		1420/45	394 (400-7/8)	
RNP 0.15 DA		1427/45	401 (500-7/8)	
RNP 0.30 DA		1480/50	454 (500-1)	

ELEV 1026	<b>D</b>	TDZE 1026
-----------	----------	-----------



## AUTHORIZATION REQUIRED

HIRL all runways  
TDZ/CL Rwy 8L, 9R, 10, 26R,  
27L and 28