

APP CRS	Rwy Idg	11730
095°	TDZE	1019
	Apt Elev	1026

RNAV (RNP) Z RWY 9L

ATLANTA/ HARTSFIELD - JACKSON ATLANTA INTL (ATL)

▼ For uncompensated Baro-VNAV systems, procedure NA below -9° C (16° F) or above 54° C (130° F). For inoperative MALSR, increase RNP 0.11 all Cats visibility to RVR 6000, RNP 0.15 and RNP 0.30 all Cats visibility to 1½. GPS Required. Simultaneous approach authorized with ILS or LOC Rwy 8L, ILS Rwy 8L (Cat II), ILS Rwy 8L (Cat III), ILS or LOC Rwy 8R, ILS Rwy 8R (Cat II), ILS Rwy 8R (Cat III), ILS or LOC Rwy 10, ILS Rwy 10 (SA Cat I), ILS Rwy 10 (Cat II), ILS Rwy 10 (Cat III), RNAV (GPS) Y Rwy 10. Use of FD or AP providing RNAV track guidance required during simultaneous operations.

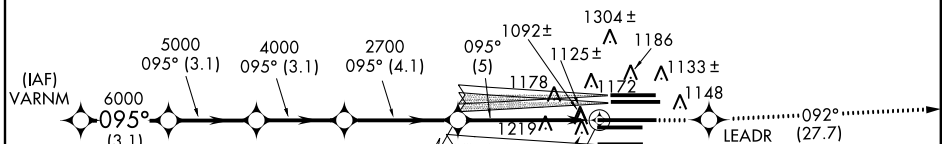


MISSED APPROACH:
Climb to 4000 direct LEADR and on track 092° to CONNI and hold.

ATIS	ATLANTA	ATLANTA TOWER				ALL	GND CON			ALL	
ARR 119.65	APP CON	8L-26R	8R-26L	9L-27R	9R-27L	10-28	RWYS	(8L-26R,8R-26L)	(9L-27R,9R-27L)	10-28	RWYS
DEP 125.55	127.9 379.9	119.1	125.325	123.85	119.3	119.5	254.4	121.9	121.75	121.65	254.4

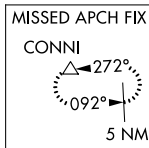
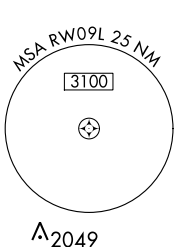
RADAR REQUIRED

2048 Δ	2048 Δ	2049 Δ	CLNC DEL 118.1
1637 Δ	Δ 2049 \pm		

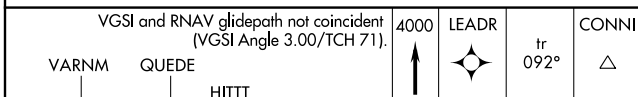


SE-4, 07 FEB 2013 to 07 MAR 2013

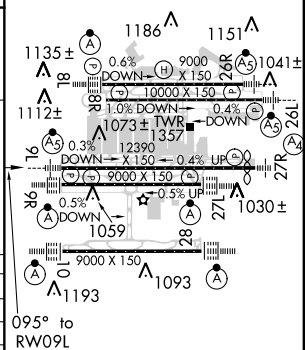
SE-4, 07 FEB 2013 to 07 MAR 2013



ELEV 1026	D	TDZE 1019
-----------	----------	-----------



GP 3.00°	TCH 56	3.1 NM	3.1 NM	3.1 NM	4.1 NM	5 NM
CATEGORY	A	B		C	D	
RNP 0.11 DA		1375/40		356 (400-¾)		
RNP 0.15 DA		1425/45		406 (400-¾)		
RNP 0.30 DA		1481/60		462 (500-1¼)		



AUTHORIZATION REQUIRED

HIRL all runways
TDZ/CL Rwys 8L, 9R,
10, 26R, 27L and 28