

APP CRS	Rwy Idg	<b>10000</b>
<b>095°</b>	TDZE	<b>1024</b>
	Apt Elev	<b>1026</b>

# RNAV (RNP) Z RWY 8R

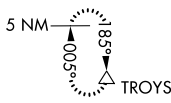
ATLANTA/ HARTSFIELD - JACKSON ATLANTA INTL (ATL)

**▼** For uncompensated Baro-VNAV systems, procedure NA below -9°C (16°F) or above 54°C (130°F). GPS required. Simultaneous approach authorized with ILS or LOC Rwy10, ILS Rwy 10 (SA Cat I), ILS Rwy 10 (Cat II), ILS Rwy 10 (Cat III), RNAV (GPS) Y Rwy 10. Use of FD or AP providing RNAV track guidance required during simultaneous operations.

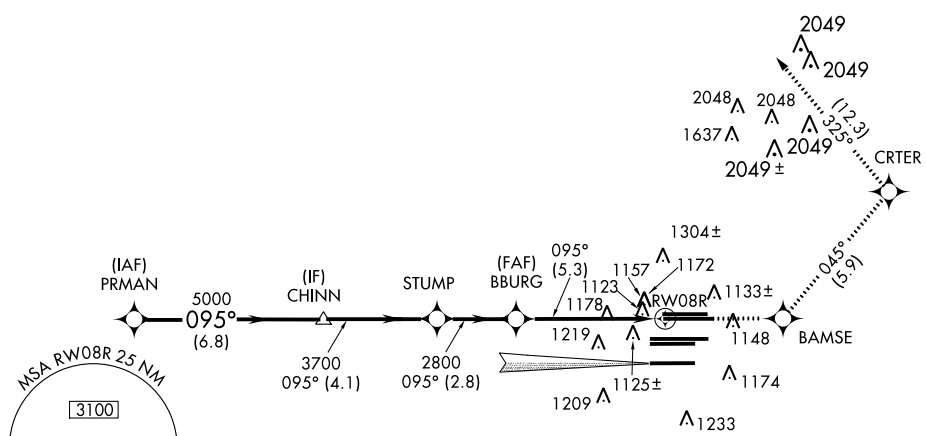
MISSED APPROACH: Climb to 3500 direct BAMSE and on track 045° to CRTER and on track 325° to TROYS and hold.

ATIS	ATLANTA APP CON	ATLANTA TOWER					ALL RWYS	GND CON	ALL RWYS
ARR <b>119.65</b>		8L-26R	8R-26L	9L-27R	9R-27L	10-28	(8L-26R,8R-26L)	(9L-27R,9R-27L)	10-28
DEP <b>125.55</b>	<b>127.9 379.9</b>	<b>119.1</b>	<b>125.325</b>	<b>123.85</b>	<b>119.3</b>	<b>119.5</b>	<b>254.4</b>	<b>121.9</b>	<b>121.75 121.65 254.4</b>

## RADAR REQUIRED

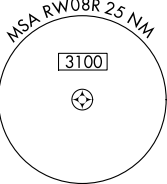


CLNC DEL **118.1**

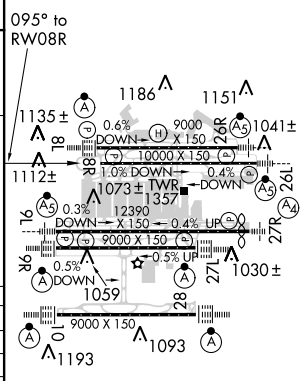
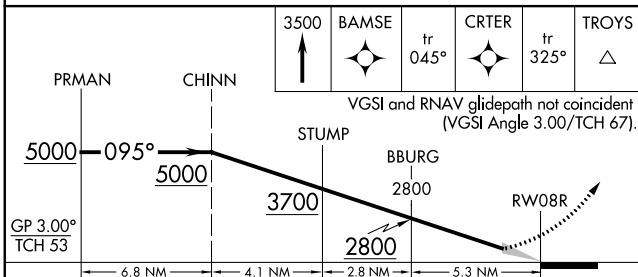


SE-4, 07 FEB 2013 to 07 MAR 2013

SE-4, 07 FEB 2013 to 07 MAR 2013



ELEV 1026	<b>D</b>	TDZE 1024
-----------	----------	-----------



CATEGORY	A	B	C	D
RNP 0.11 DA		1412/60	388 (400-1½)	
RNP 0.15 DA		1419/60	395 (400-1½)	
RNP 0.30 DA		1474-1½	450 (500-1½)	

## AUTHORIZATION REQUIRED

HIRL all runways  
TDZ/CL Rwys 8L, 9R, 10, 26R, 27L and 28

# RNAV (RNP) Z RWY 8R