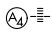


APP CRS	Rwy Idg	11690
275°	TDZE	985
	Apt Elev	1026

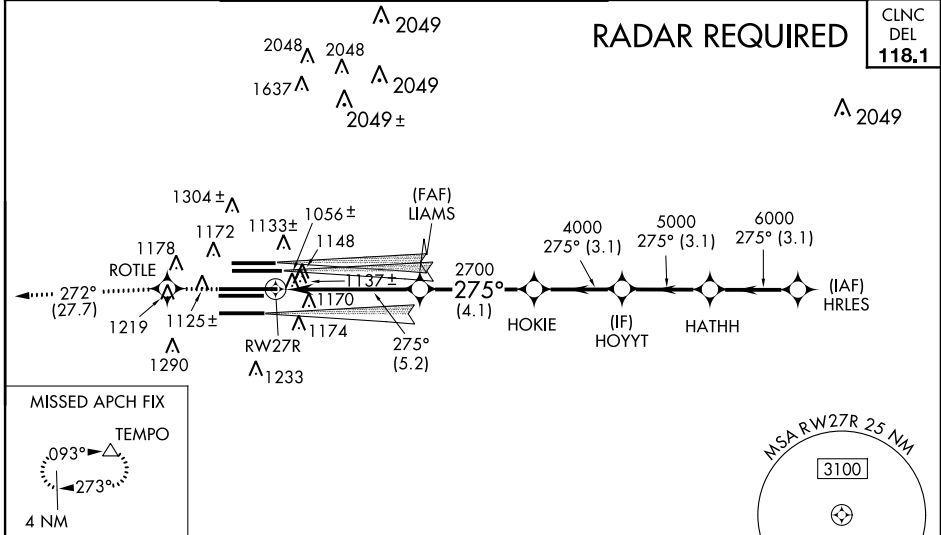
RNAV (RNP) Z RWY 27R

ATLANTA/ HARTSFIELD - JACKSON ATLANTA INTL (ATL)

▼ RNP 0.11 * missed approach requires a minimum climb of 300 feet per NM to 1700. For uncompensated Baro-VNAV systems, procedure NA below -9°C (16°F) or above 54°C (130°F). For inoperative MALS, increase RNP 0.11 * all Cats visibility to RVR 5000, RNP 0.11 all Cats visibility to RVR 6000, RNP 0.15 all Cats visibility to 1½, RNP 0.30 all Cats visibility to 3¼. GPS required. Simultaneous approach authorized with ILS or LOC Rwy 26L, ILS or LOC Rwy 26R, ILS Rwy 26R (SA Cat I), ILS Rwy 26R (SA Cat II), RNAV (GPS) Y Rwy 28, ILS or LOC Rwy 28, ILS Rwy 28 (Cat II). Use of FD or AP providing RNAV track guidance required during simultaneous operations.

MALS

MISSED APPROACH:
 Climb to 4000 direct ROTLE and on track 272° to TEMPO and hold.

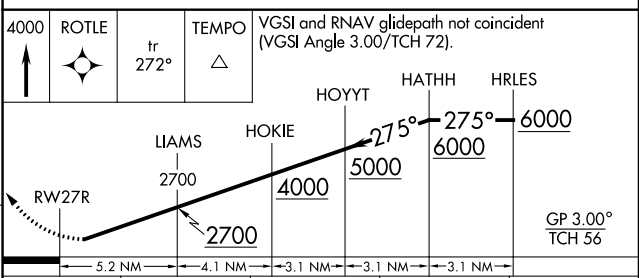
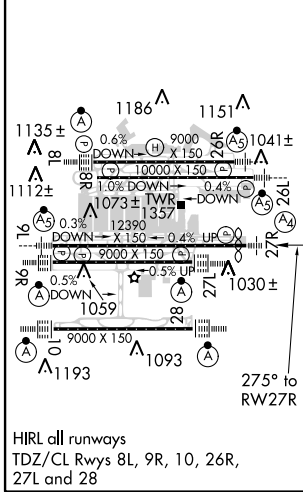
ATIS	ATLANTA APP CON	ATLANTA TOWER				ALL RWYS	GND CON	ALL RWYS
ARR 119.65		8L-26R	8R-26L	9L-27R	9R-27L	10-28	(8L-26R,8R-26L) (9L-27R,9R-27L)	10-28
DEP 125.55	127.9 379.9	119.1	125.325	123.85	119.3	119.5	121.9	121.75 121.65 254.4



SE-4, 07 FEB 2013 to 07 MAR 2013

SE-4, 07 FEB 2013 to 07 MAR 2013

ELEV 1026	D	TDZE 985
-----------	----------	----------



CATEGORY	A	B	C	D
RNP 0.11 DA*		1300/40	315 (300-¾)	
RNP 0.11 DA		1373/50	388 (400-1)	
RNP 0.15 DA		1399/60	414 (400-1¼)	
RNP 0.30 DA		1484-1½	499 (500-1½)	

AUTHORIZATION REQUIRED